



Volume 1

Kurt von Pusch
Hans Rudolf Spillmann

How Did We Emerge?

From Creation

Via The Big Bang

To Mankind

In Anthroposophie And Sciences

This book consists of five parts :

Part 1 Prearrangements

This book Calls Upon ...

In Short !

- A. How Did We Emerge ?
- B. Spiritual Aspects
- C. Scientific Aspects

Part 2 Core Part

- D. Mankind and Matter
 - 1. *The Solar Cosmos Coming to Life*
 - 2. *During EARTH : An Overview*
 - 3. *Geological Layers Older Than Fossils*
 - 4. *Dating Clues by D. Bosse*
 - 5. *During EARTH : Details*
 - 6. *Time Lines*
 - 7. *Did Lemuria or Atlantis Ever Exist At All ?*
 - 8. *Our Remote Past And Remote Future*

Part 3 Aftermath

- E. How the Brain and Thinking Evolved
- F. How Consciousness and Soul Aspects Evolved
- G. Conclusions

Part 4 Appendixes

H. Aspects of Brain Physiology

I. Graphs, Diagrams, Spreadsheets, and Cues

- 1. *Diagram Excerpt : Comparative Chronological Table by D. Bosse*
- 2. *The 7 Planetary Developmental States of the Solar Cosmos*
- 3. *The Solar Cosmos Arising : Sequences*
- 4. *The Solar Cosmos Arising : Tasks*
- 5. *Spreadsheet Supplements*
- 6. *Ages by Cues*

Part 5 Lexical Part

- J. References
 - 1. *Rudolf Steiner's Works Quoted Here*
 - 2. *Glossary*
 - 3. *Numbers and Counts*

Part 4

Appendices

Contents

| | |
|--|------------------|
| H. Aspects of Brain Physiology..... | <u>6</u> |
| H.1. Anatomic Aspects of the Brain..... | <u>7</u> |
| <i>Fig. H.1.1. Brainstem : everything in red [Wikipedia].....</i> | <u>7</u> |
| <i>Fig. H.1.2. The limbic system [Wikipedia].....</i> | <u>8</u> |
| <i>Fig. H.1.3. Left hand side of the cerebrum [colored] [Wikipedia].....</i> | <u>9</u> |
| <i>Fig. H.1.4. Nucleus accumbens and tegmentum [Wikipedia].....</i> | <u>10</u> |
| H.2. Synapses..... | <u>11</u> |
| <i>Fig. H.2.1. Chemical synapse [Wikipedia].....</i> | <u>11</u> |
| <i>Fig. H.2.2 GABA receptor [Wikipedia].....</i> | <u>12</u> |
| H.3. Neurochemical Transmitter Substances : Neurotransmitters..... | <u>13</u> |
| <i>The Dopaminergic System'.....</i> | <u>13</u> |
| <i>The Serotonin System'.....</i> | <u>14</u> |
| <i>Fig. H.3.1. Serotonin system [Wikipedia].....</i> | <u>14</u> |
| <i>Excerpts of serotonin workings [Wikipedia.de] :.....</i> | <u>15</u> |
| I. Graphs, Diagrams, Spreadsheets, Cues..... | <u>16</u> |
| I.1. Diagram Excerpt : Comparative Chronological Table by D. Bosse..... | <u>16</u> |
| <i>Fig. I.1.1. Comparative chronological table.....</i> | <u>16</u> |
| I.2. The Solar Cosmos..... | <u>17</u> |
| I.2.1. The 7 Planetary Development States of The Solar Cosmos..... | <u>17</u> |
| I.2.2. The 7 Life States during EARTH..... | <u>18</u> |
| I.2.3. The 7 Form States during the Mineral Realm..... | <u>19</u> |
| I.2.4. The 7 Ages during the Physical Form State..... | <u>20</u> |
| I.2.5. The 7 Cultural Periods during the Post-Atlantic Age'..... | <u>21</u> |
| I.3. The Solar Cosmos Arising : Sequences..... | <u>22</u> |
| Step 1 : 7 planet spheres = planetary development states'..... | <u>22</u> |
| Step 2 : EARTH : 7 life states = elementary kingdoms..... | <u>22</u> |
| Step 3 : mineral realm : 7 form states = principal states'..... | <u>22</u> |
| Step 4 : physical form state of EARTH : 7 ages = (principal) times = (principal, root) races'..... | <u>23</u> |
| Step 5 : Post-Atlantic age : 7 cultural periods = cultural epochs = (nether) times = side states = nether races = (human) cultures'..... | <u>23</u> |
| I.4. The Solar Cosmos Arising : Tasks..... | <u>24</u> |
| (A) First of all the roughest comparative precis possible..... | <u>24</u> |
| <i>Tab. I.5.1 EARTH : The roughest comparative precis possible.....</i> | <u>25</u> |
| (B) During the planetary development states the elohim transform the spiritual to physical and material elements'..... | <u>26</u> |
| (C) Iterations (ages) during the planetary development state of ERDE becoming material'..... | <u>29</u> |
| (D) After the 7th creation day :..... | <u>30</u> |
| I.5. EARTH : Tabular Amendments..... | <u>31</u> |
| ... for section D «Man and Matter», chapter 5 «During EARTH : Details»..... | <u>31</u> |
| The Polaric age'..... | <u>31</u> |
| The Hyperborean age'..... | <u>32</u> |
| 1st - 6th epochs'..... | <u>32</u> |
| The Hyperborean age - 7th epoch [?4570 - 720? million years ago]'..... | <u>33</u> |

Contents

| | |
|---|---------------------------|
| <i>The Lemurian age [?720? - 66 million years ago]'</i> | <u>34</u> |
| <i>Lemuris beginning [?720? - 538.8 million years ago]'</i> | <u>34</u> |
| <i>IV) PHANEROZOIC = Eon of «Visible Life» [538.8 million years ago until our days].....</i> | <u>35</u> |
| <i>IV a) Paleozoic = Era of «Ancient Life» [538.8 - 251.9 million years ago].....</i> | <u>35</u> |
| <i>Early Lemuris {538.8 - 298.9 million years ago}'</i> | <u>35</u> |
| <i>Lemuris - Middle - Moon separation completing'</i> | <u>38</u> |
| <i>IV b) Mesozoic = Era of «Intermediate Life» {251.9 - 66 million years ago}.....</i> | <u>40</u> |
| <i>Late Lemuris - after the Moon Separation {251.9 - 66 million years ago}'</i> | <u>40</u> |
| <i>IV c) Cenozoic «Era of Recent Life» [from 66 million years ago up to our days]'</i> | <u>44</u> |
| <i>The Atlantic age [66 million years ago - 11.7 thousand years ago]'</i> | <u>44</u> |
| <i>The Post-Atlantic age [7227 BCE - 7893 CE in linear Sun years]'</i> | <u>51</u> |
| <i>Cultural documents in the Post-Atlantic age : archeologically and paleo-anthropologically {thousand years ago = thousand years ago}'</i> | <u>52</u> |
| <i>Cultural documents in the Post-Atlantic age : archeologically, esoterically, and historiographically'</i> | <u>54</u> |
| I.6. Ages in Keywords..... | <u>57</u> |
| <i>The Polaric Age'</i> | <u>58</u> |
| <i>The Hyperborean Age'</i> | <u>58</u> |
| <i>The Lemurian age'</i> | <u>59</u> |
| <i>The Atlantic Age'</i> | <u>63</u> |
| <i>Fig. I.6.1. Distribution of peoples during the Eocene (D.5b:177).....</i> | <u>64</u> |
| <i>Fig. I.6.2. Distribution of peoples in the Oligocene (D.5b:146).....</i> | <u>65</u> |
| <i>Fig. I.6.3. Distribution of peoples in the early Miocene (D.5b:135).....</i> | <u>66</u> |
| <i>Fig. I.6.4. Distribution of peoples in middle Miocene (D.5b:115).....</i> | <u>66</u> |
| <i>Fig. I.6.5. "Run for Atlantis" in the late Miocene (D.5b:47).....</i> | <u>67</u> |
| <i>Fig. I.6.6. "Gathered on Atlantis" in the late Miocene (D.5b:71).....</i> | <u>68</u> |
| <i>Fig. I.6.7. "Rats leaving the sinking Atlantis ship ?" (D.5b:39).</i> | <u>69</u> |
| <i>Fig. I.6.8. Distribution of peoples during the Danube ice age (D.5a:281).....</i> | <u>70</u> |
| <i>Fig. I.6.9. Distribution of peoples during the Elster ice age (D.5a:206).....</i> | <u>73</u> |
| <i>The Post-Atlantic age so far'</i> | <u>75</u> |

H. Aspects of Brain Physiology

Although this is going to be the last one of the «aspects»-series, this section is not at all to comprise every aspect of brain physiology ! Just so much that we may find comprehensible that in vol. I , part 3 , section F «How Consciousness and Soul Aspects Evolved» physical and biochemical facts are to be observed as much as *spiritual* ones. When speaking of heart fluttering, heartache or heart thinking we see the heart is the organ showing such feelings ; they do not originate in there but within the limbic system of the brain.

We are God's creation. At first we existed purely *spiritually*. By and by material existence developed from there. Correspondingly we had juxtaposed in this book *spiritual* aspects in section B with scientific ones in section C. In the meantime we have been confronting ourselves in several instances in this book with the idea that we might wish to return to *spiritual* realms in the long run. This is dealt with in chapters 5 to 10 of section F. They are about consciousness developing, see chapters 1 to 4 of section F.

Our thinking, consciousness, and memory are parts of *spiritual* aspects of ours. How do they show in the hereabouts material, sensory world ? - With the ways we behave. This is what we shall consider under scientific aspects in this section. The base is Robert Sapolsky's highly recommendable volume «Behave : The Biology of Humans at Our Best and Worst». Since as to scientific views humans develop physically on the basis of biological ancestors, suitable comparisons with animals may indicate the history of our development. Even experiments with animals may help to understand the part of ourselves that is based on reflexes and instincts.

Just two aspects are important here : the anatomic structures of the brain, and the synapses working therein with the help of neurochemical transmitter substances.

H.1. Anatomic Aspects of the Brain

Here there are just three parts of the brain interesting to us : the brainstem, the limbic system, and the frontal brain. They are anatomic structures but development stages of the brain as well. - The human brain is not at all the only brain structure in nature, see in vol. I , part 3 chapter E.1 «Evolution of the Brain».

Considering the evolution of the brain : Where do which brain functions originate ?

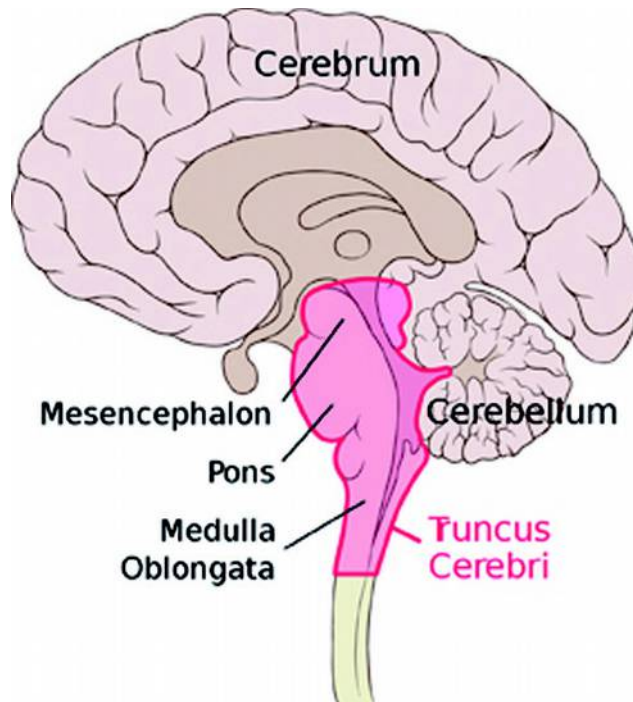


Fig. H.1.1. Brainstem : everything in red [Wikipedia].

The **brainstem** regulates important functions of the rest of the body such as heart beat, blood pressure, and breath frequency. With humans it extends above and below the large occipital hole which was already dealt with in part 2 , chapter D.5. «During *EARTH* : Details», see Fig. D.5.6., when asking whether humans might be recognized by its position. As it is positioned more to the front than with great apes man can keep upright saving energy compared to great apes. Great apes bend more to the front and are unable by their posture to run upright for a longer time.

The brainstem's lowest part, the «medulla oblongata» = «prolonged marrow» or «afterbrain», extends into the spine. The first cerebral vertebra is called «atlas», «carrying» the skull. In spite of its additional important function to save the brainstem it is a thin annular bone. If somebody strangulates himself he was lucky if the atlas broke. The second cerebral vertebra, shaped like a thorn reaching upward to keep the atlas in place, will tilt into the brainstem, interrupting heart beat and breathing, and killing the person instantly. If however the brainstem remains unviolated the person suffocates, which takes more time and provokes unfathomable despair. In this dastardly way hangmen in times of lore could act out their sadism in a completely lawful way by pulling the knot just a bit too tight before the execution so that the rope could not swoosh down fast enough onto the neck of the person sentenced to be hanged.

The brainstem has nerve connections «upwards» to the areas of the brain above it as well as «downwards» to the important physical organs - indirectly via the spine and directly via the so-called cranial nerves.

The brainstem's direct neighbor «upwards» is called the limbic system. In Fig. H.1.2. it is all the central areas, everything not colored russet.

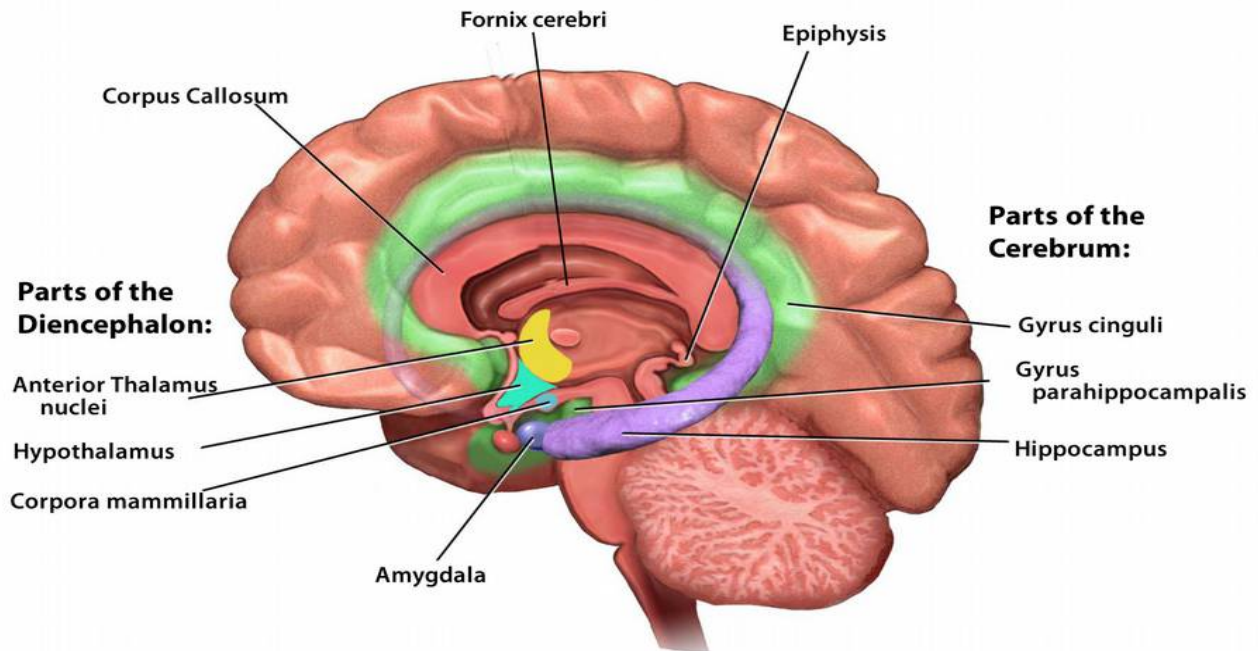


Fig. H.1.2. The limbic system [Wikipedia].

The **limbic system** is a functional structure composed like a fringe, not an anatomic entity. It is disrespectfully called : reptile brain. In a quibbling way we say it is what even a crocodile needs. Reptiles, too, need it in a simple configuration to defend themselves, for procreation, and to hunt for food.

With humans [Fig. H.1.2.] it is positioned in a central part of the brain, deeply enclosed by the dome-shaped cerebrum. It contains everything named in Fig. H.1.2., connecting upwards and downwards to all the brain areas, partly via the **thalamus**, «chamber», which is part of the **diencephalon** or **interbrain**, situated between the **cerebrum** and the **mesencephalon** or **midbrain** [Fig. H.1.1.]. The limbic system regulates the hormonal balance via the hypothalamus, «under the thalamus», and the pituitary gland or hypophysis = «the excrescence suspended below». - The hypophysis is colored deep red in Fig. H.1.2. but not named in there because it is nothing but a gland, not part of the brain. It is situated in the central line between the twin amygdalae colored in blue.

In addition the limbic system boosts our feelings : anger and joy, sympathy and antipathy, hunger and thirst - all the feelings, so far unfiltered by the cerebrum. Before all the **amygdalae**, «almond {-shaped}», the lowest part of the limbic system and nearest to the brainstem, influence all the parts of the brain. In fact they transmit their impulses - optically impressing in Fig. H.1.2. - in a large arc via the adjacent twin **hippocampi**, called «seahorses» because of their shape, too. Direct nerve pathways to or from the limbic system - never the same ones ! - facilitate quick reactions without involving the cerebrum. So an officer in fright checking personal data during a mass rally, may have recognized the man was drawing a gun, and shot him - before milliseconds later, when his cerebrum became active finally, he understood the man was reaching for his ID card. Journalists or jurymen, too, accusing him of mere racism, ought to freshen up what they know about cerebral physiology. In part 3 , chapter F.2. the same scene was looked at under the aspect of the 'I'. Once again different world views lead to the same results.

With the **cerebrum** we are interested here in the workings of the **frontal lobe** before all, and of two small areas in there at the lower rim, one of which is situated rather to the outside, and the other one correspondingly adjacent to the middle line of the brain.

H.1. Anatomic Aspects of the Brain

Both are named for their positions : in the «cortex» -,
much to the front - «pre-» -
of the «frontal» lobe,
more exactly towards the back - «dorso-» -
and towards the side - «lateral» -,
or towards the «middle» line respectively :

dorso-lateral Pre-Frontal Cortex : dIPFC and

dorso-medial Pre-Frontal Cortex : dmPFC.

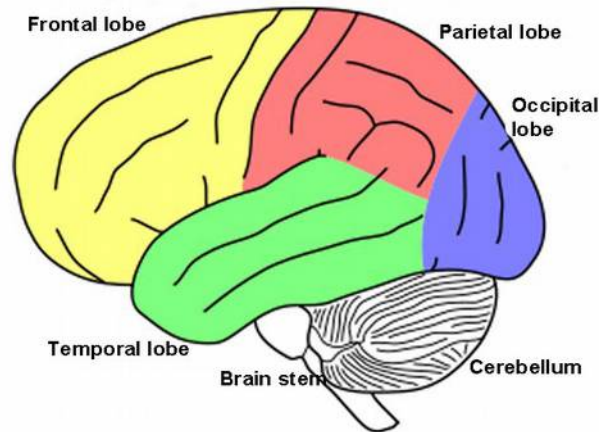


Fig. H.1.3. Left hand side of the cerebrum [colored]
[Wikipedia].

Their unimaginatively anatomical names are not so very important really but their functions are diametrically different, and so we must distinguish them carefully here : The dIPFC boosts a person to be thoughtful, pensive, of a pondering mood, by hemming in the connections to the amygdalae. The dmPFC on the other hand keeps positive net connections to the amygdalae and the other nuclei of the limbic system, reinforcing them. We need the constant interplay between the two - the same as everywhere in the brain and in the ways we behave. If we lacked thinking we would behave brainlessly as the instinct-ridden animals do. If we lacked feeling we would be soul-less calculation machines.

«Oh I know !», somebody might claim, «the left hand side of the brain, and the right one.» No, both nuclei exist on each side of the brain. Furthermore the functional difference between both sides of the brain is not as big as was thought of. After lesions the sides may even be partially commutated. In our days we attach more importance to the dIPFC compared to the dmPFC. One or the other is sure to have heard of Phineas Gage, who had a heavy tamping rod flying through his frontal brain at an explosion, landing some 70 feet away. Gage survived changing his character by and by : By and by he became grumpy, cantankerous, unreliable - extremely different from before, and finally eked out his life as an exposition object in a traveling circus.

What matters to us is that the cerebrum is the phylogenetically youngest part of the brain, the frontal brain the youngest part of the cerebrum, and the PFC again is the youngest part of the frontal brain. It uses up an especially much energy, and is especially in danger of being interfered with. Ontogenetically it develops as the last part of the brain. It matures in the fourth *seven-year-phase*, when according to Steiner a person confronts the world, chooses a partner and a profession, developing the *sentient soul*. - A little bit of a conundrum : Tell me what is this disease : He - more often than she - is overwhelmed by his feelings, does not stand being corrected, and is an insupportable mess ? - No disease at all, just an ordinary teenager. You have just got to wait for the dIPFC to mature winning predominance over the amygdalae, hippocampi, the rest of the limbic system, and the dmPFC.

Perhaps you had similar experience, perhaps with yourself even. Perhaps you felt your capacity to love growing as late as your third decennium : when the independent 'I' arose. This is the time Steiner calls "*the 4th seven-years-phase*" of life. Again the world views merge : It does not make sense to expect loving comprehension or love from a teenager. - One or the other cannot be expected so later in life either, i.e. when he lagged developing.

Concerning our topic here, namely understanding physiologic nerve tracts connected to thinking, feeling, and willing, we still need to consider two sorts of nerve connections the next chapter is about before all :

In the first place interconnections running to and fro - however on different nerves, see the next chapter - between

- (a') the frontal brain - Fig. H.1.3. -,
- (b') the diencephalon or interbrain - Fig. H.1.2. -,
- (c') the mesencephalon or midbrain - Fig. H.1.1. -,
- (d') the limbic system - its lower parts before all, the amygdalae and hippocampi - Fig. H.1.2. -,
- (e') and the brainstem - Fig. H.1.1. -. In there the upper part before all, which is called tegmentum, «hood», and VTA = ventral tegmental area - Fig. H.1.4. -.

H. Aspects of Brain Physiology

In the second place the nucleus accumbens connects the midbrain and the interbrain to the frontal brain. Nucleus accumbens means : «nerve body living close to», namely underneath the frontal brain, see Fig. H.1.4. The Renaissance anatomists, oriented to the here and now, just loved salacious names in Latin or ancient Greek lingo. Just think of the «corpora mammilaria» in Fig. H.1.2.

Although the accumbens does not belong to the limbic system anatomically, it is considered to belong there by its function, for in addition to motions it toggles feelings of well-being wherefrom addiction may ensue. The accumbens and the tegmentum take part in the **dopaminergic system**. This name is used both in brain anatomy and functionally. In the following chapter it is just the functional aspect that interests us.

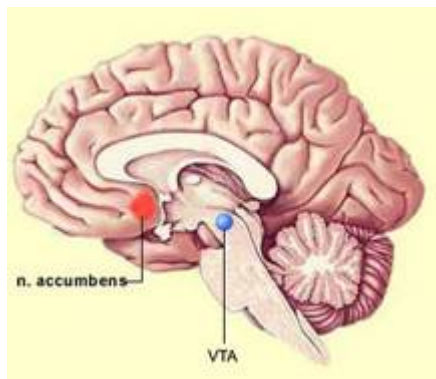


Fig. H.1.4. Nucleus accumbens and tegmentum [Wikipedia].

H.2. Synapses

... work between two cells but in one direction only. Triggered by an electric discharge inside it the transmitting cell empties small vesicles out into a special interim space [«**synapse**» = «joined together»] to an adjacent cell, which may be another nerve cell, a sensory cell, a muscle cell, or a gland cell. The vesicles contain just one kind of messenger or carrier substance [«**transmitter**» in Fig. H.2.1.] which is received in the same synapse by an equally specialized receptor of the adjacent cell which may be a nerve cell, a sensory cell, a muscle cell, or a gland cell.

Impulses may be forwarded directly : In **electrical synapses** the action potential is passed on to the subsequent cell without a conveying biochemical transmitter substance. They exist in neurons, in the retinas, and in the heart, and with invertebrates, too, as voltage-controlled synapses without any transmitter. They enable action potentials spreading rapidly and synchronously. - Here we are interested in **chemical synapses**, see Fig. H.2.1. They are more frequent than electric synapses, and the majority of chemical synapses work with biochemical substances to transfer information.

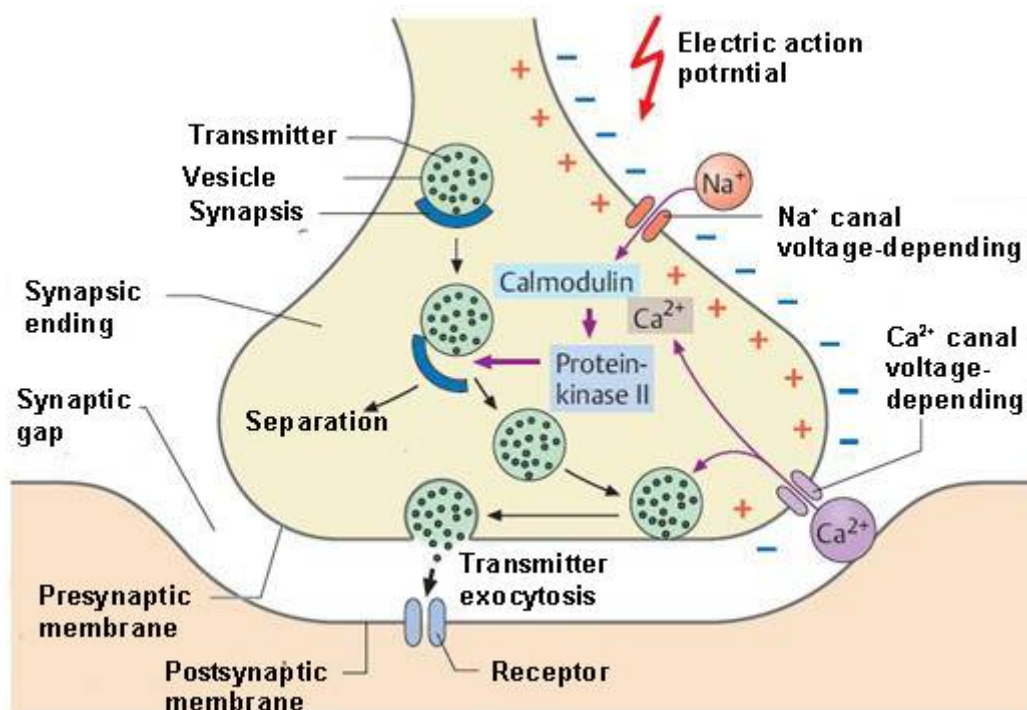


Fig. H.2.1. Chemical synapse [Wikipedia].

How does the transmitter substance penetrate the cell membrane ? - In Fig. H.2.2. this is exemplified with a GABA receptor. GABA = Gamma-Amino-Butyric-Acid. Several medicines or poisons may unfold their working with the same receptor. GABA receptors with various binding sites may dock : alcohol, cocaine, nicotine ; hyoscyamine, atropine ; parathion = E 605 ; benzodiazepines, betablockers, and many more medicines. In the brain, neurons are equipped with GABA receptors when they are to diminish arousal.

H. Aspects of Brain Physiology

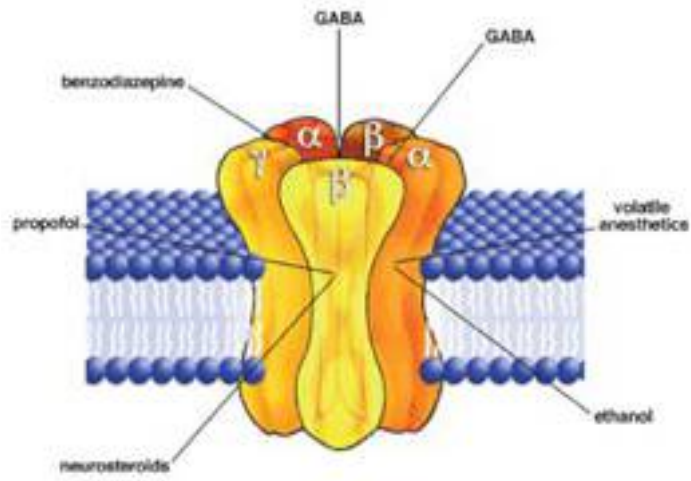


Fig. H.2.2 GABA receptor [Wikipedia].

H.3. Neurochemical Transmitter Substances : Neurotransmitters

Here we are interested before all in neurons effecting something. We shall consider **pure neurotransmitters**, and among them the dopaminergic system and the serotonin system because these two enhance emotions before all.

The Dopaminergic System'

... transfers impulses in quite different areas of the brain. In the midbrain [mesencephalon in Fig. H.1.1.] for example lacking dopamine triggers shaking palsy, Parkinson's disease. In the hypothalamus [Fig. H.1.2.] it doses the impulses effecting hormonal discharges in the hypophysis [colored deep red in Fig. H.1.2.]. Here we are interested in the effects on feelings, those of well-being before all. Drugs such as cocaine, heroine or alcohol release dopamine in the accumbens [Fig. H.1.4.]. Under chronic stress or pains dopaminergic neurons are stimulated less easily, and there ensues a depression, an anhedonia to be more exact : the inability to feel joy. Sex, hunger, or thirst stimulate the dopaminergic system in any animal species examined. At least humans discharge dopamine already when just thinking of sex. Thinking of food or drink does not work as much in a dopaminergic way as thinking of sex. Saturation diminishes dopamine secretion whereas such thoughts enhance dopamine secretion while on a diet. So beware of diets !

Other joyful topics enhance dopamine discharge, too : agreeable sport, watching matches, pleasant music - boosting sales in shops - , cultural events ; looking at sport cars or other power instruments with men, and with women colorful dressing or watching men in uniforms.

Here we are interested before all in dopamine discharges in social interaction, with games for instance. In a computer game for scientific purposes both players received a small reward when cooperating with each other. When however stabbing the other one the player received a big reward. Dopamine was discharged more with cooperating behavior than with stabbing. All the participants were women. - With a different game player B, instructed beforehand, was to bamboozle player A, the participant. Consequently player A might react in several ways : (a) not doing anything ; (b) he might take money away from player B ; or (c) he might pay him some money to get the double amount back from him. (b) and (c) augmented dopamine discharge in player A. The more dopamine was discharged with player A in case (b), the more he was ready to pay for punishing player B because evidently he was not paid the double amount (case c) : We enjoy punishing for norm violations. - A different temptation game was to inquire whether winning or losing in a lottery ensued the same feelings as with an auction : negative. To wit winning increased dopamine discharges in both cases. But : A blank did not change the dopamine discharge whereas dopamine discharge was diminished when going under in an auction : Simple bad luck and social going under are received differently. - Gloating, too, is a result of dopamine discharge. Participants were shown a film of a hypothetical person who was successful in all the aspects of life. Participants admitting in the aftermath having been envious, had shown activity in the cerebrum's centers of pain. Then the film continued showing the hypothetical protagonist plunging into disaster. Participants who had activated pain centers during the first part, showed raised dopamine discharges during the second part : Gloating can be enjoyed. - In a similar way do envy, resentments, or simple malevolence increase the dopaminergic system.

So dopamine is discharged with feelings that are assessed very differently. What then does regulate the dopamine discharges ? - Amazement ! This is what could be shown in animal experiments. When a monkey had his special food ration doubled, the dopamine discharge increased as expected. A few days later however it sank back although the food ration remained constant : He got used to the food ration. Not the real food ration mattered to the monkey but being amazed. The same with being deceived : The dopamine discharge sank below base level when the monkey was put on the initial food ration again. - Once more the reader may feel reminded of experiences of his or her own.

Of course expectations and deceptions are gauged in the frontal brain. But then the impulses are forwarded to older brain areas via the tegmentum and the accumbens [Fig. H.1.4.]. Joyful expectations will release dopamine in the tegmentum, feeling deceived will release the inhibiting neurotransmitter GABA mentioned above. The connections run up and down but in both directions on different nerve tracts, enhancing or inhibiting, depending on the transmitter substance respectively.

Drugs, legal the same as illegal ones, release an excess of dopamine. By necessity one gets accustomed, as described above with the monkey. Habituation cannot be overruled by other joys because these offer either less joy,

H. Aspects of Brain Physiology

or joys that are attained with more difficulty. It is exactly habituation that demands indispensably to raise the dose. This is a danger about it because without raising the dose there ensue feelings of being deceived, reduced discharges of dopamine, and feeling vacant. Normal joys such as an exiting task, an enjoyable view, a soft, agreeable sound, will not excite then any more. Anhedonia, depressions ensue.

Continuing and more exactly : Dopamine will signal somebody is expecting something. The monkey guinea pig above received his additional food ration only after work, i.e. after having pressed a push-button. As expected - key word habituation - the augmented food ration evoked rather small dopamine discharges after some time. But when a light announced the food ration beforehand dopamine was excreted abundantly. Not the task - pressing the push-button - , not even the reward - additional food ration - made the monkey discharge additional dopamine but the light did when announcing the session : The pleasant anticipation did. What is more : After several sessions dopamine continued being discharged at a high level : Pleasant anticipation does not ensue habituation.

When is dopamine discharged between a task and the reward ? - When the participant cannot be sure the task is rewarded at all ! The greater the uncertainty the higher the dopamine discharge. This is exactly what makes gambling at slot machines paradoxically a temptation to gamblers while non-addicts can evaluate the disastrously minimal chance of winning. - Conclusion : Dopamine is excreted not only when expecting a reward but even more than that when estimating highly the chances of a reward. What is more : The longer the time of expectations the higher the dopamine excretion. Now we may learn how to induce long-lasting joy to ourselves or to - adult ! - others : by convincing ourselves - or others - of high chances although there will be a long time of waiting : the next party / the next vacation / birthday / Christmas / release from prison / paradise. - Surely one or the other may remember with himself or herself. We may feel reminded, too, of long-term promises with denominations as well as authoritarian world views.

Such are the results to be found with so-called higher vertebrates. Humans may do more. We take pains for good grades at school, to master the SAT, ACT, or CLT, to achieve a grant, a good graduation, and a well-paid job for an old age pension scheme. Even continuing after death : ... so the grandchildren may inherit, the nation may win, or to enter paradise. There is not an animal going so far. «We may merely be a type of animal, mammal, primate, and ape but we're a profoundly unique one.» [Sapolsky pg 76]. An anthroposophist is enchanted. The German translation however adds : "... among them." [Sapolsky pg 103]. The anthroposophist is not having any of it.

The Serotonin System'

Serotonin was found not only with mammals but with crickets, shells, and crustacea, too. With humans it originates in the brainstem in nuclei in the middle line [= raphe nuclei, see Fig. H.3.1.] at the level of the cerebellum. Neurons discharging serotonin are linked to the limbic system [Fig. H.1.2] enhancing dopamine effects in higher brain areas, for instance in the **Pre-Frontal Cortex, PFC**. Low serotonin levels in the human brain occurred together with impulsive, imprudent aggressions from hostile posture as far as violence. In short serotonin focuses **in the central nervous system** what dopamine induces.

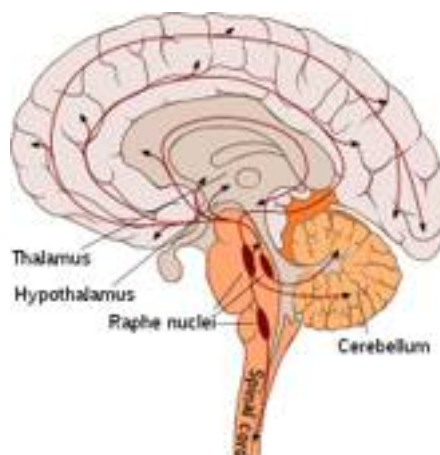


Fig. H.3.1. Serotonin system [Wikipedia].

Excerpts of serotonin workings [Wikipedia.de] :

Mood : Among the best known workings of serotonin **in the central nervous system** are its workings on moods. It conveys a feeling of sedateness, inner calm, and contentment. On the way it smoothens a long row of various emotional states, especially fright, aggressivity, sorrow, or hunger. Depressive moods may often be traced back to a lack of serotonin or its precursor state, the amino acid tryptophan. An overdose, such as by selective serotonin reuptake inhibitors or an erroneous combination of several medicines, may lead to fierce physical grievances, which may be fatal, and hallucinations [so-called serotonin syndrome].

Serotonin mainly leads to hemming in impulsivity and aggressive behavior by stimulating certain areas of the cortex, responsible for emotional regulation. Conversely low serotonin levels lead to enhanced impulsivity and aggressiveness. Activating certain serotonin receptors is responsible for the euphorogenic and hallucinogenic effect of serotonin antagonists such as LSD.

Serotonin – aside of dopamine, oxytocin, and endorphins – is often called «feel-good hormone» in the vernacular because of its effects on moods. Consuming groceries rich in tryptophan, such as chocolate or bananas, may lead to a mood-boosting effect because they may pass the blood-brain barrier - contrary to serotonin. In addition the absorbed carbon hydrates have neurotransmitter [such as serotonin] production and excretion enhanced in the brain leading to the same effects.

Sleep-wake rhythm : Possibly serotonin regulates the sleep-wake rhythm, as has been suggested since the fifties. For a long time findings concerning modulations of the sleep-wake rhythm were contradictory. As far as we know nowadays serotonin largely enhances waking : During waking the neurons in the raphe nuclei [Fig. H.3.1] containing serotonin are active. In deep sleep on the other hand they reduce their activity, and during REM-sleep they are as much as inactive.

Appetite : Serotonin is a neurotransmitter whose discharge in the brain is indirectly connected to food uptake. A factor is the concentration of free tryptophan in blood plasma. Food rich in carbon hydrates and proteins at the same time lead to discharging insulin and taking up tryptophan in the brain, that which is associated to enhancing serotonin synthesis.

Serotonin is especially associated to hemming in appetite. With overweight individuals tryptophan levels in blood plasma are diminished, and so are serotonin levels in the brain. Medication enhancing serotonin concentrations in the brain lead to diminished appetite as a side effect. Activating certain serotonin receptors selectively lead to enhanced appetite by inhibiting serotonin excretion.

Pain : Serotonin when released from hurt nerve cells, activates pain stimuli directly. More important, serotonin enhances or diminishes pain stimuli via descending serotonergic neurons into the posterior horn of the spine marrow.

Sexuality : Serotonin is excreted into the hypothalamus [Fig. H.1.2] at the time of ejaculation among others. Primarily it has an inhibiting effect on sexual behavior as well as sexual functioning. In there serotonin functions as an antagonist of dopamine. Medication augmenting serotonin in the brain may lead to diminishing sexual needs with men and particularly to diminished capacity of erection or inhibition of ejaculation.

Temperature regulation : Serotonin in the central nervous system takes part in regulating body temperature. Depending on the brain area and the receptors involved serotonin may lead to body temperature rising or lowering.

I. Graphs, Diagrams, Spreadsheets, Cues

I.1. Diagram Excerpt : Comparative Chronological Table by D. Bosse

Partial excerpt from Bosse 2002 pg 44 ; 2012 pg 36 ; 2015 pg 623

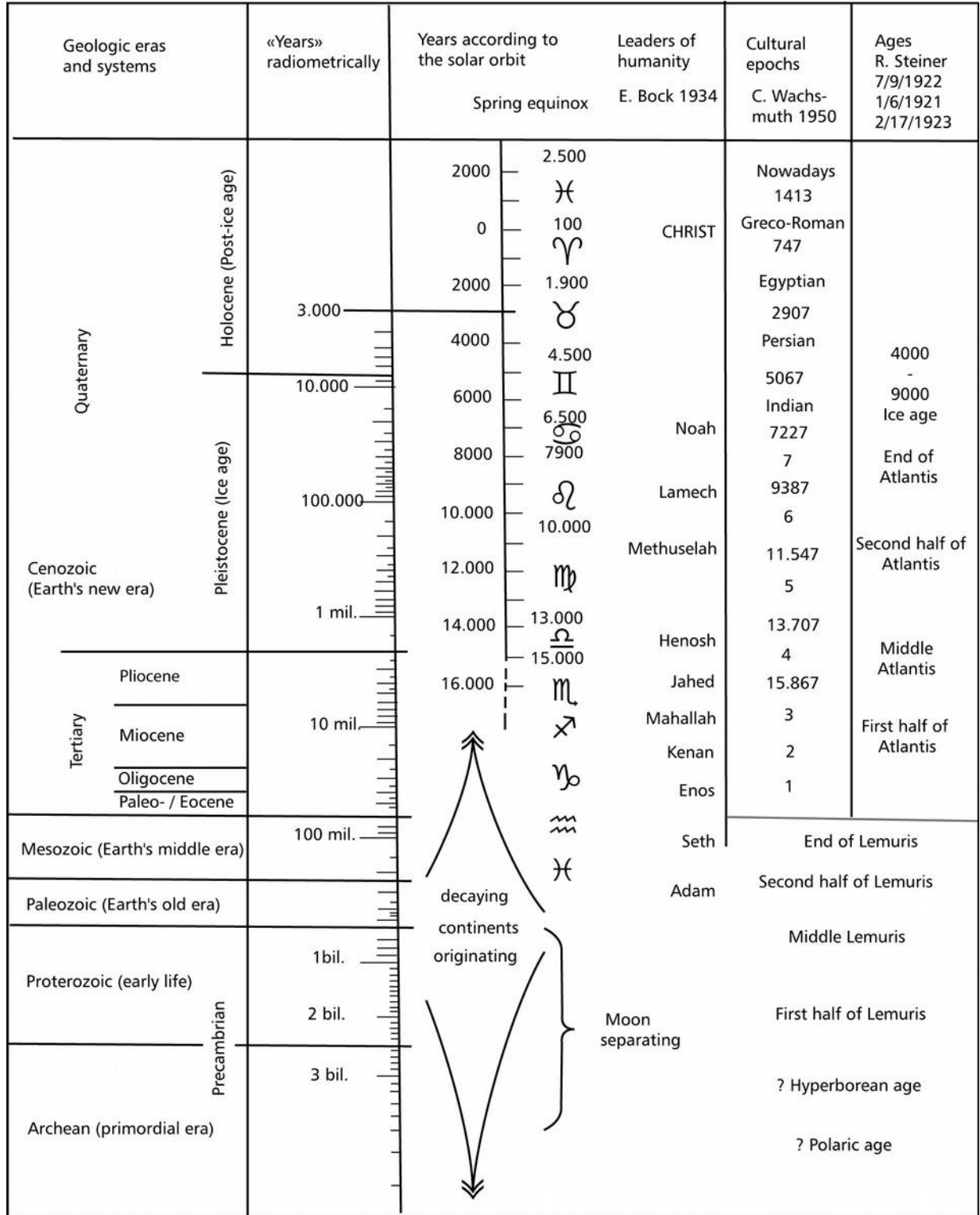
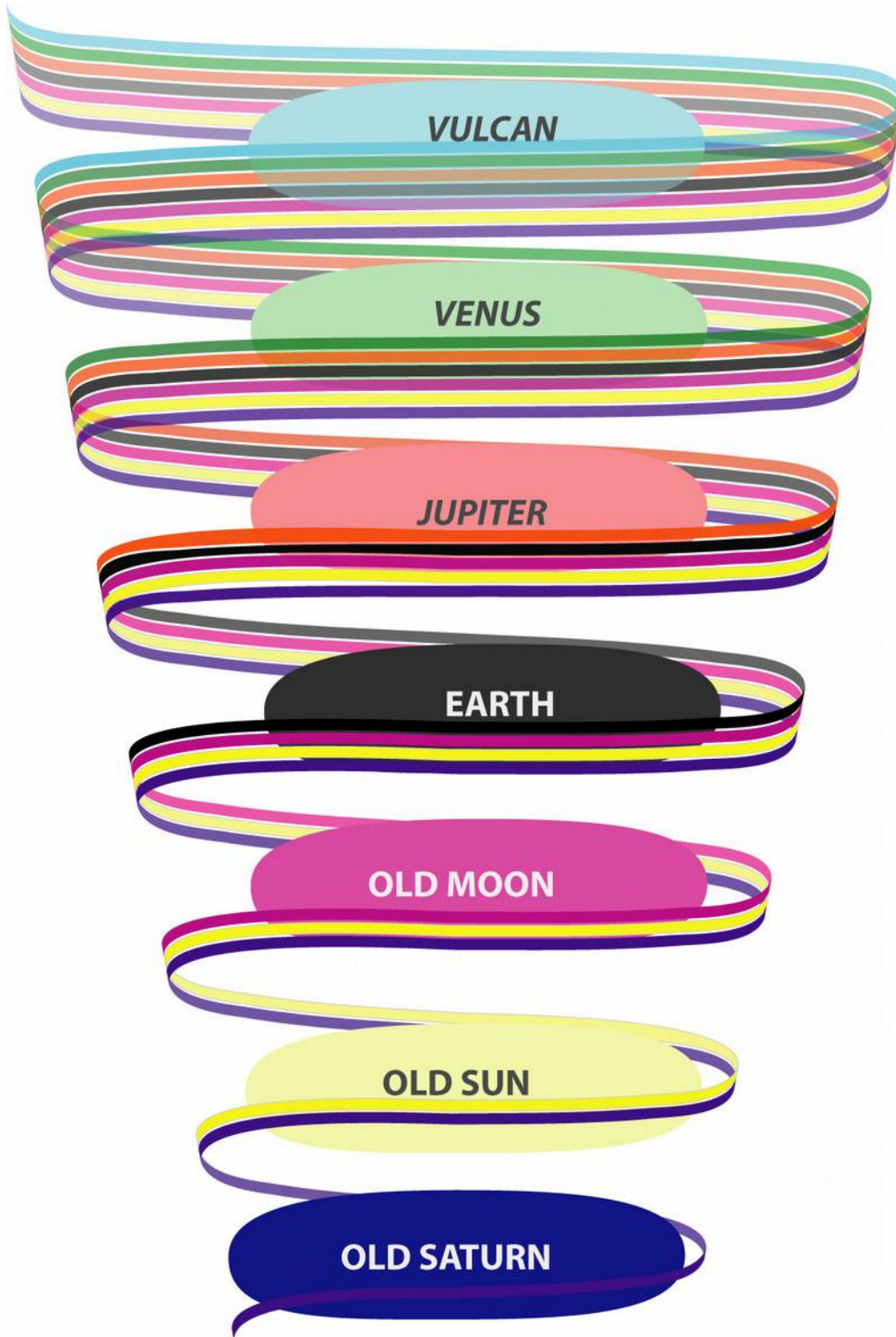


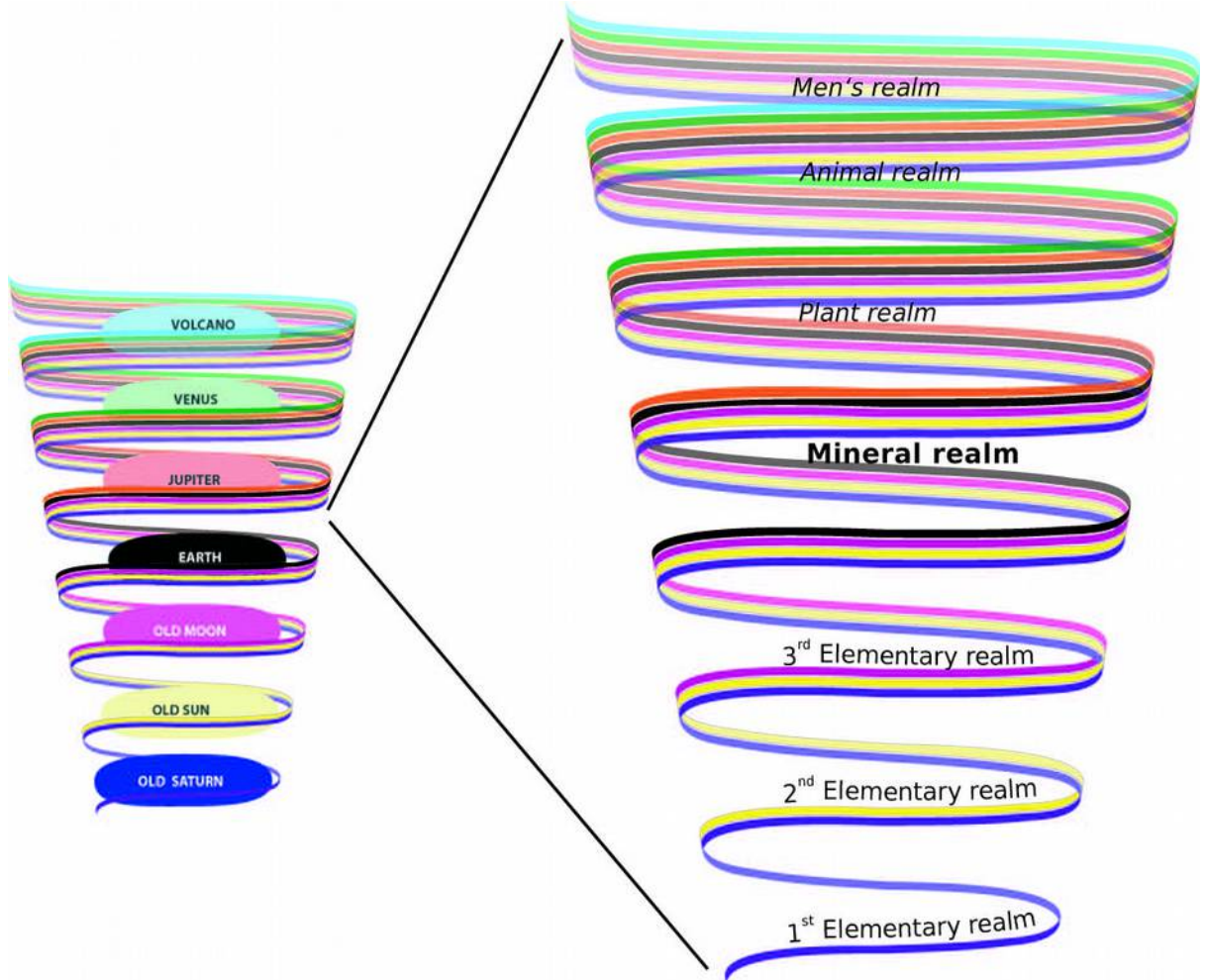
Fig. I.1.1. Comparative chronological table.

I.2. The *Solar Cosmos*

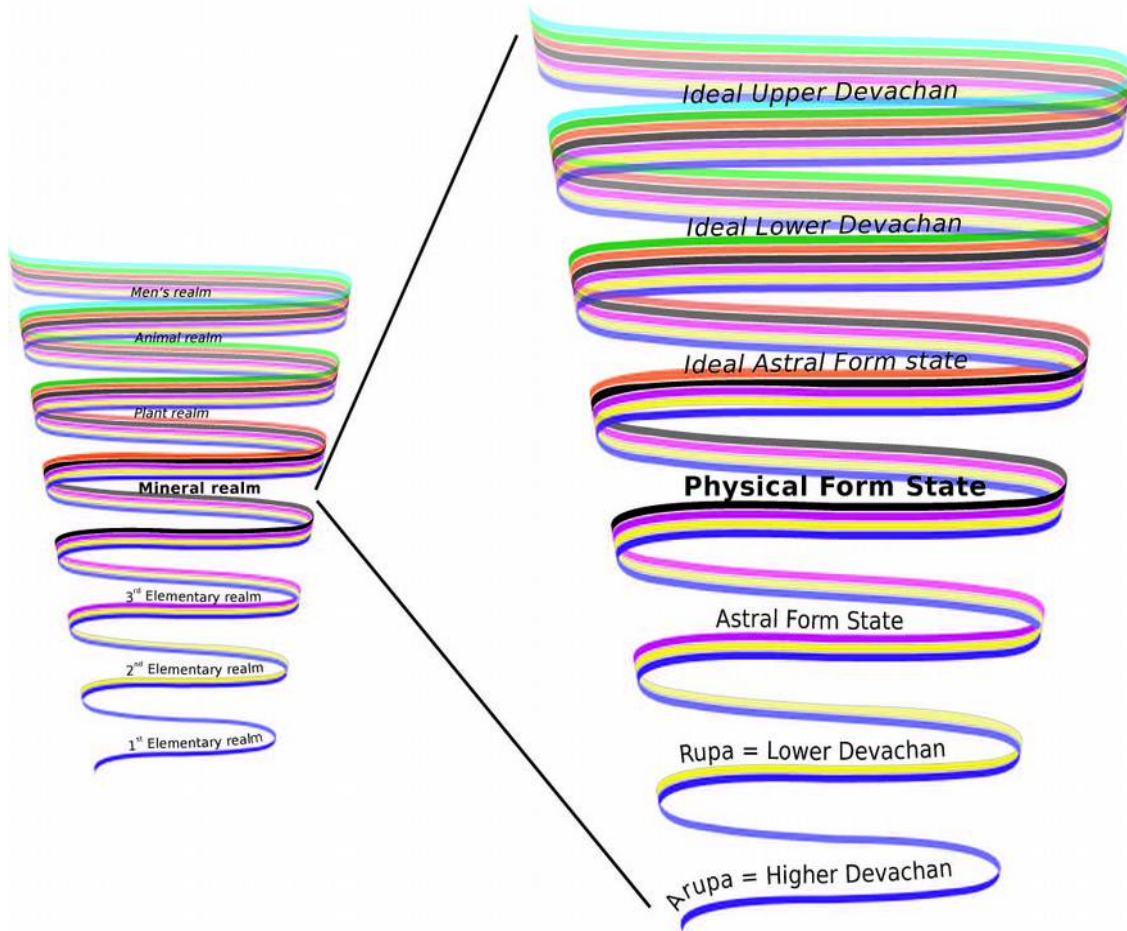
I.2.1. The 7 Planetary Development States of The *Solar Cosmos*



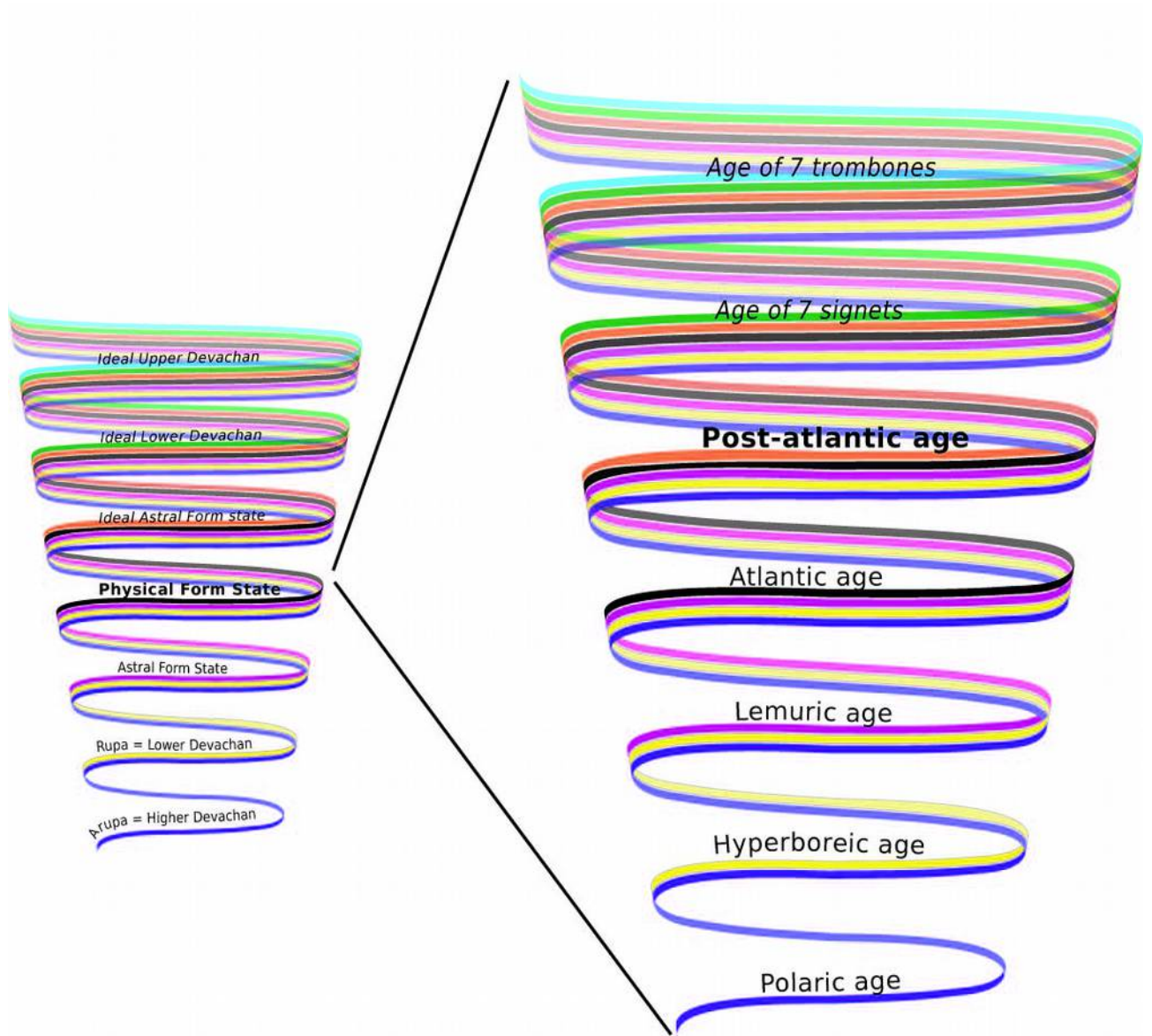
I.2.2. The 7 *Life States* during *EARTH*



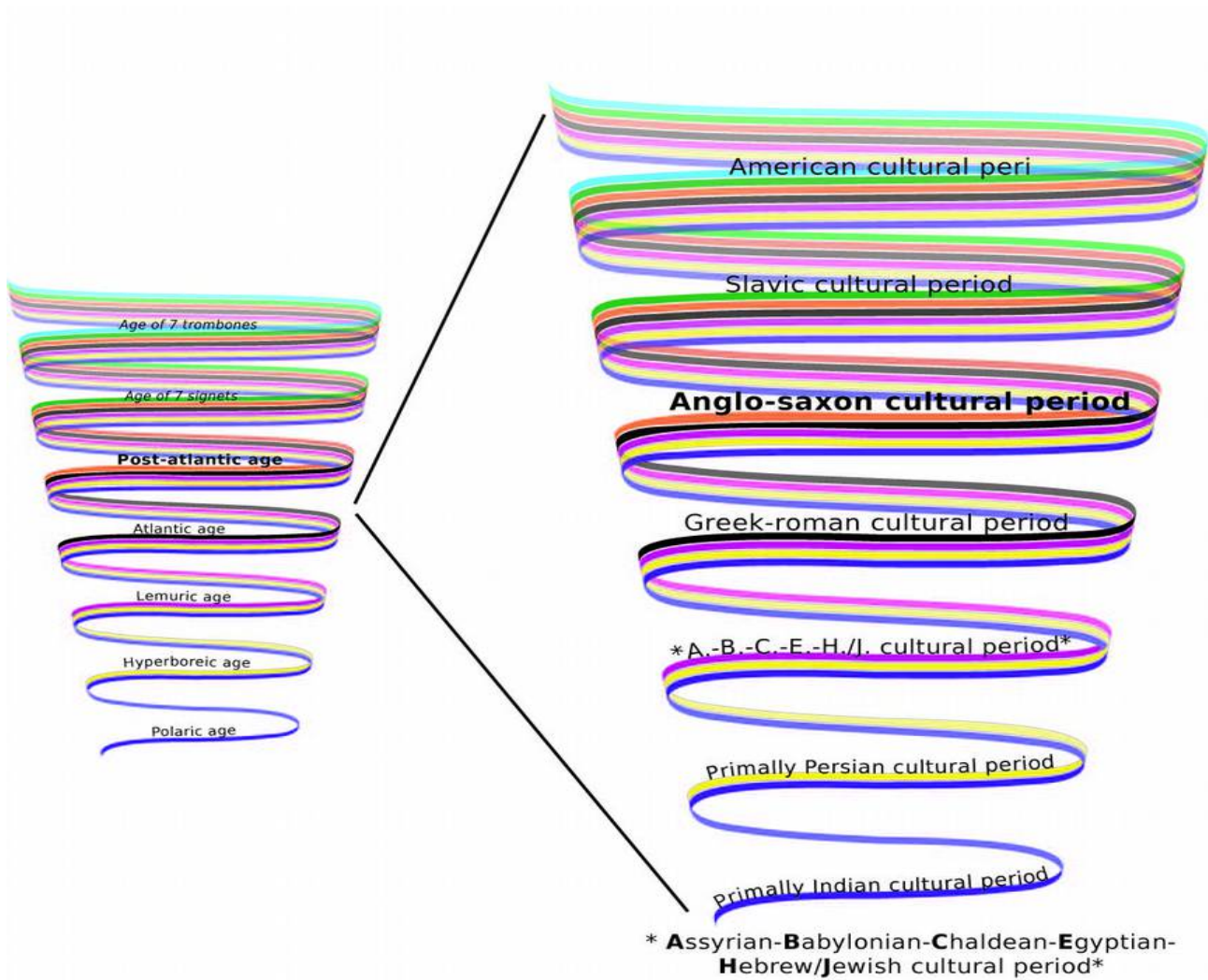
I.2.3. The 7 Form States during the *Mineral Realm*



I.2.4. The 7 Ages during the *Physical Form State*

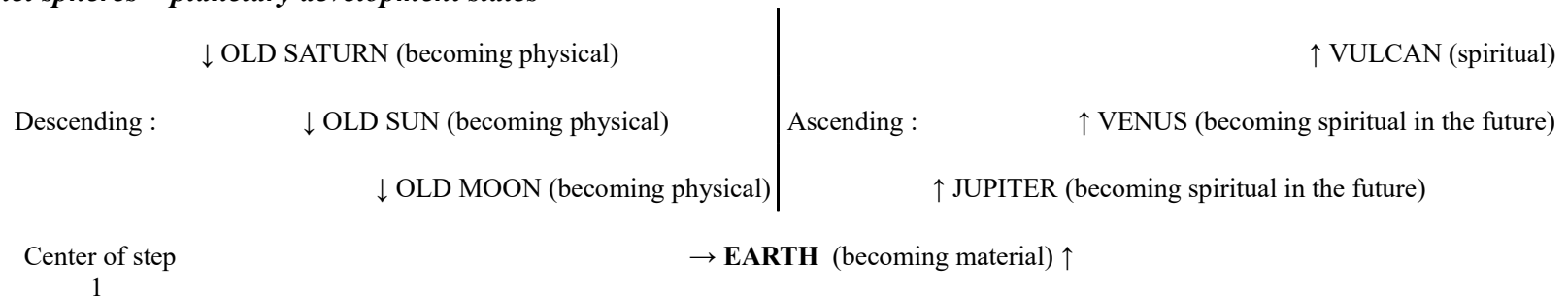


I.2.5. The 7 *Cultural Periods* during the *Post-Atlantic Age*'

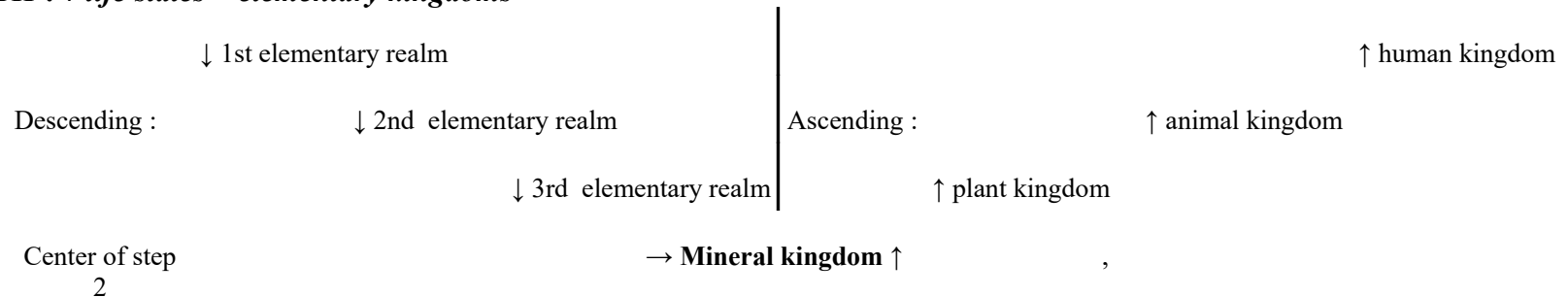


I.3. The *Solar Cosmos* Arising : Sequences

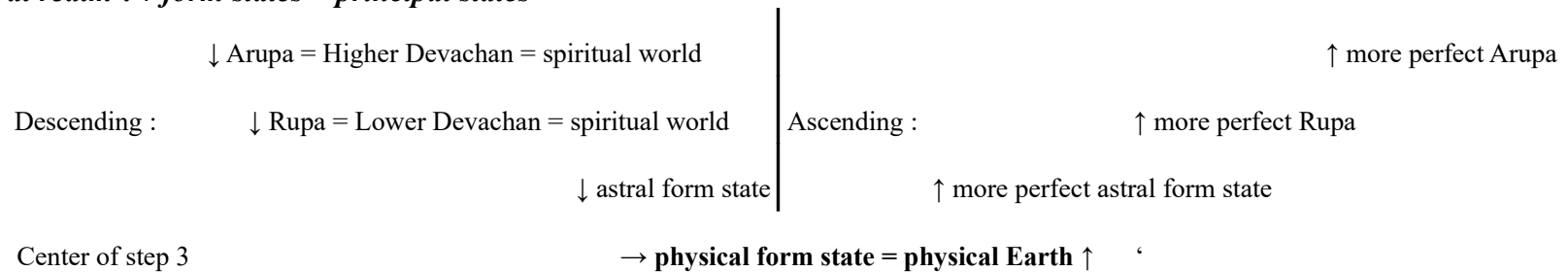
Step 1 : 7 planet spheres = planetary development states'



Step 2 : EARTH : 7 life states = elementary kingdoms

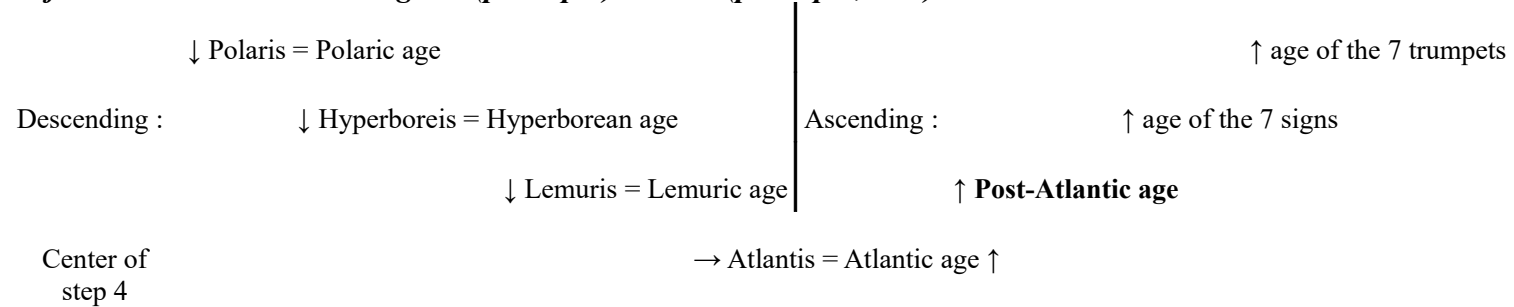


Step 3 : mineral realm : 7 form states = principal states'

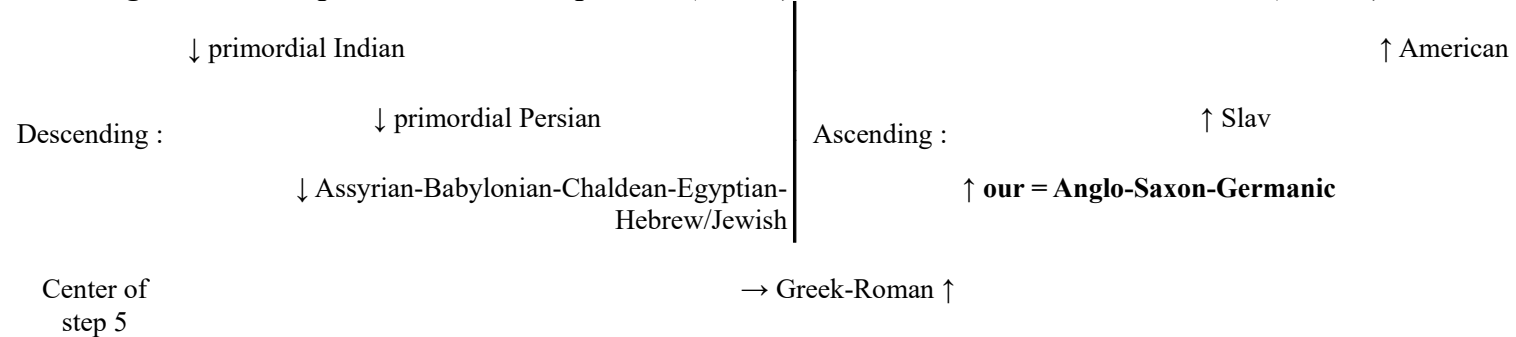


IV) PHANEROZOIC = Eon of «Visible Life» [538.8 million years ago until our days]

Step 4 : physical form state of EARTH : 7 ages = (principal) times = (principal, root) races '



Step 5 : Post-Atlantic age : 7 cultural periods = cultural epochs = (nether) times = side states = nether races = (human) cultures '



Note : In every step **bold type** is used for the step we are actually in. - In every step every **ascending** time stage must repeat its corresponding descending precursor (in the same line) although under different world conditions. For instance our = Anglo-Saxon-Germanic cultural period [**ascending**] repeats the Assyrian-Babylonian-Chaldean-Egyptian-Hebrew/Jewish cultural period [**descending**]. Just the center of each step does not repeat any stage because it does not have a mirroring partner. In the example here, step 5, it is the Greek-Roman cultural period.

I.4. The *Solar Cosmos* Arising : Tasks

Anthroposophic expressions are still written *italic*.

(A) First of all the roughest comparative precis possible

Let us begin with *spiritual beings* dealing predominantly with mankind. This iterating precis appeals to reason before all because of its concision, and will appear dogmatic. Anthroposophy is not so because it is based on what a person feels internally. Whoever would like to deal with anthroposophy, ought to be ready to approach the *spiritual*. This will take time, devotion, and patience before all.

Whatever will remain unclear may be looked up in the glossary - or still better in the text. The data given here refer to (*R.Steiner 26:203 - 222 , LII – LIV : 11., 18., 25.1.1925 ; 100 - 104 , XXXIX : 21.9.1924 ; 87 - 90 , XXXIII : 31.8.1924 ; and to 118 – 122 , XLII : 2.11.1924*).

So far we can just sense *clairvoyantly* how the Earth originated with its preliminary stages and *ages*. *Spiritual beings* are helping us on the way. To us they appear in hierarchies and *grades* :

1st hierarchy : *dyanic* (= divine) *beings* {1} : *seraphim* {1.1}, *cherubim* {1.2}, *thrones* {1.3}.

2nd hierarchy : *gods* {2} : *dominions* {2.1} / *mights* {2.2} / *elohim* {2.3}.

3rd hierarchy : *angels* in the broad sense {3} : *archai* {3.1}, *archangels* {3.2}, *angels* in the strict sense {3.3}.

Not subjected to time or space they work with each other, into each other, and pervading each other. Their tasks vary as the Earth develops. Here we are predominantly interested in developments concerning mankind : the *elohim* and the 3rd hierarchy (*angels* in the broad sense).

IV) PHANEROZOIC = Eon of «Visible Life» [538.8 million years ago until our days]

| | | | | | | | |
|----------------------------------|--|---|------------------------------|--|--|------------------------|---|
| The hierarchy of | 'began their present tasks just about | 'according to science : in the | | 'in the model year [4540 million years = 1 year] | The <i>hierarchy</i> influences man after he died for him to reincarnate : | Man's foes still today | How does man's soul develop ? (R. Steiner 26:118 – 122 , XLII : 2.11.1924) |
| elo-him {2.3} | 'earlier than the beginning of <i>Lemurian age</i> | Precambrian [?4,570? – 538.8 million years ago] | | 'from January 1 st 0 o'clock | | | Man merges totally in the divinely <i>spiritual world</i> , lacking any existence of his own : He does not feel like an independent doer but like something the <i>spiritual beings</i> work on. They present him with earliest anlagen of his <i>astral body</i> and <i>ether body</i> . |
| archai {3.1} | 'during the early <i>Lemurian age</i> | Paleozoic [538.8 – 251.9 million years] | | 'on November 18 th | | | |
| arch-angels {3.2} | 'during the late <i>Lemurian age</i> | Mesozoic [251.9 - 66 million years ago] | | 'on December 14 th | 'man's <i>physical body</i> and life forces (<i>ether body</i>). | Lucifer | Man attains the earliest grade of independence from the divinely <i>spiritual world</i> : What <i>spiritual beings</i> create in the physical world, are merely revelations to him. He recognizes them directly in the stars. |
| angels in the strict sense {3.3} | 'during the <i>Atlantean age</i> | Cenozoic : Paleogene + Neogene + ice age [66 million years ago – 11.7 thousand years ago] | | 'on December 25 th | 'man's feelings (<i>astral body</i>) and 'I'. | Ahriman | Now the <i>spiritual</i> beings manifest in his view by sheer efficacy . He feels - hardly consciously as yet - they influence him solely by that they effectuate. For the first time he regards the <i>spiritual beings</i> and the stars as different from himself. |
| | 'during the <i>Post Atlantic age</i> | Cenozoic : post-ice age [11.7 thousand years ago - future] | | 80 sec. ago | 'man's <i>consciousness</i> developing. | | The <i>spiritual beings</i> manifest in his view merely by their workings . He becomes more and more conscious of the <i>spiritual beings</i> drawing back completely from the physical world. He learns to look for their will in the world of stars (3 rd <i>cultural period</i>). He sees them as idealized humans, and depicts them (4 th <i>cultural period</i>). |
| | | 5 th <i>cultural period</i> | 'therein : 1413 - 3573 | 3.5 sec. ago | 'man's <i>consciousness soul</i> developing. | Asuras | The physical world discloses to him solely by the sciences. To him the <i>spiritual world</i> has died. He learns to calculate the star world. |
| | | <i>Age of Michael</i> | 'from 1879 for 300-400 years | 1.3 sec. ago | | Sorat | Michael shows the way back into the <i>spiritual</i> : back to the Christ. |

Tab. I.5.1 EARTH : The roughest comparative precis possible

I. Graphs, Diagrams, Spreadsheets, Cues

(B) During the planetary development states the *elohim* transform the *spiritual* to physical and material *elements*'

The *elohim* originate ...

{quoted from R.Steiner 122 unless otherwise stated.} {Not to be seen in the table : wide transitions !}

| | | | | | |
|---|----------------------------------|------------------------------|--------------------------|-----------------------------|---|
| ... during the planetary development states : | I <i>OLD SATURN</i> | II <i>OLD SUN</i> | III <i>OLD MOON</i> | IV <i>EARTH</i> | (In between them : <i>pralayas</i> = purely spiritual phases.) |
| the <i>elements</i> : | <i>warmth -/ fire-like</i> | + <i>gas-like / air-like</i> | + <i>liquid / watery</i> | + <i>solid / earth-like</i> | (= becoming more and more rough) |
| from the <i>densification</i> of: | of the <i>thrones</i> (physical) | of fire-warmth | of gas-air | of liquids | (= becoming more and more rough) |
| and <i>refinement</i> of : | their <i>spirituality</i> | + light-ether | + sound- / tone-ether | + life-ether | (becoming finer & finer) (R.Steiner 122:80 f, III : 8/18/1910 ; 122:145 , VIII : 8/23/1910). |
| Resulting in hardening : | { <i>physical I</i> } | { <i>physical II</i> } | { <i>physical III</i> } | + becoming <i>matter</i> | consistency (becoming rougher & rougher) |
| which can be discerned by senses of today : | just to be felt | {+ to be smelled ?} | {+ to be heard ?} | + to be seen. | Note: Only matter is visible. → Only during EARTH man becomes capable of juxtaposing himself to <i>matter</i> (R.Steiner 122: 46 , II : 8/17/1910). |

| | | | | | |
|--|-----------------------------------|----------------------------------|---|------------------------------------|---|
| The | <i>thrones</i> | <i>dominions</i> | <i>mights</i> | <i>elohim</i> | offer up their own substance. |
| In the | 1 st = dynamic | 2 nd = divine | 2 nd = divine | 2 nd = divine | hierarchy ... |
| ...they are the | 3 rd | 1 st | 2 nd | 3 rd | grade. |
| Their other names are | | <i>kyriotetes, dominationes</i> | <i>dynamis, eons, virtues, virtutes</i> | <i>exusai, powers, revelations</i> | |
| and <i>spirits</i> of | will | wisdom | motion | form. | |
| actively assisted by the | <i>archai = primordial powers</i> | <i>fire spirits = archangels</i> | <i>angels in the strict sense</i> | <i>Yahweh-elohim</i> | |
| = the 3 rd <i>hierarchy's</i> : | 1 st | 2 nd | 3 rd | 3 rd | grade (all <i>angels</i> in the broad sense). |

IV) PHANEROZOIC = Eon of «Visible Life» [538.8 million years ago until our days]

These respective *spiritual beings* altogether form ...

| | | | | | |
|--|--------------------------|-----------------------------------|---|--------------------|--|
| ... during the <i>planetary development state</i> of : | I <i>OLD SATURN</i> | II <i>OLD SUN</i> | III <i>OLD MOON</i> | IV <i>EARTH</i> | |
| ... the respective first anlagen of : | the <i>physical body</i> | the <i>ether body / life body</i> | <i>astral body / light body</i> (R.Steiner 122:146 , VIII : 8/23/1910) | the 'I' | out of the <i>spiritual human core</i> . |
| They then value : | a mineral | a plant | an animal | a human. | |
| From divine ... | | | wisdom | love | |
| ... there results human ... | | | | wisdom. | (Human love only during JUPITER.) |

The *spiritual human core* prepares within itself (R.Steiner 122:144 , VIII : 8/23/1910) primordial anlagen (R.Steiner 122:180 f, X : 8/25/1910) by cosmic reflection (BARA, R.Steiner 122:112 f, VI : 8/21/1910) of the *elohim* : as they separate within themselves (R.Steiner 122:144 , VIII : 8/23/1910) : inner reviving, internal activity, pervaded by yearning (HA'AREZ, R.Steiner 122:46 , II : 8/17/1910), and to the outside something revealing itself in a forceful way (HASCHAMAJIM, R.Steiner 122:46 , II : 8/17/1910). Primordial anlagen originating from :

| | | | | | |
|--|--|--|---------------------------------|----------------------------------|--|
| | | NEPHESCH = sentient soul (beginning earlier than the Sun separation) | RUACH = reasoning and mind soul | N'SCHAMMAH = consciousness soul. | |
|--|--|--|---------------------------------|----------------------------------|--|

How do animals, plants and minerals originate ? - What is alike to animals in our days originates as an earliest anlage during *OLD SUN* – initially just as minerals the same as any creature. → So during *EARTH* it can develop just as far as the astral body, becoming an animal at best. - The same with what is alike to plants in our days : When the earliest anlage, as a mineral as usual, originates during *OLD MOON* → then up to *EARTH* just the ether body can develop, resulting in a plant on *EARTH*. - Minerals originate during *EARTH* and cannot develop to other *life states*. - *Spiritual Hierarchies* and their tasks remain the same as with mankind, but they shift into the next *OLD planetary development state* (R.Steiner 112:71 f, IV : 7/22/1909). Shown as a table :

I. Graphs, Diagrams, Spreadsheets, Cues

| | | | | | |
|-----------------------|------------------------|----------------------|------------------------|--------------------|-----------------------------|
| During | I <i>OLD SATURN</i> | II <i>OLD SUN</i> | III <i>OLD MOON</i> | IV <i>EARTH</i> | there originate at best ... |
| ... what is to become | human | animal | plant | mineral | in our days. |

| | | | | |
|---|---------------------------|----------------------------|--|---|
| If archai {3.1} or thrones {1.3} lag behind there originate until ... | ... OLD SUN : minerals | ... OLD MOON : + plants | ... EARTH : + feelings beings, i.e. animals in our days ... | |
| ... and at best they attain : | the astral body | the ether body | the physical body. | . |

| | | | |
|---|-----------------|---|--|
| If archai {3.1} continue lagging behind and thrones {1.3} with them there originate : | minerals | + plants, i.e. plants in our days ... | |
| ... and at best they attain : | the astral body | the ether body. | |

| | | |
|---|---|--|
| If archai {3.1} still continue lagging behind and thrones {1.3} with them there originate : | minerals, i.e. matter in our days ... | |
| ... staying nothing but : | the physical body. | |

| | | | |
|--|----------------|---|---|
| If archangels {3.2} lag behind and dominions {2.1} with them there originate : | minerals | Plants, i.e. plants in our days ... | |
| ... and at best they attain : | the ether body | the physical body. | . |

| | | |
|---|--------------------|--|
| If archangels {3.2} continue lagging behind and dominions {2.1} with them there originate : | minerals | |
| ... staying nothing but : | the physical body. | |

IV) PHANEROZOIC = Eon of «Visible Life» [538.8 million years ago until our days]

(C) Iterations (ages) during the planetary development state of ERDE becoming material'

... without *pralayas* but otherwise everything from the above, i.e. from the *OLD planetary development states* is iterated correspondingly. "You will be sure to see the iterations cannot occur in a totally unequivocal way but will transit into each other." (R.Steiner 122:84 , IV : 8/19/1910).

("Moments" = development steps during *EARTH* : beginning with creation days (R.Steiner 122:70 f, 74 , IV : 8/19/1909), but Steiner (122:153 , VIII : 8/23/1909)) uses the term later than the creation days, too.)

During *EARTH* the angels in the broad sense = the 3rd hierarchy work joined by the 1st and the 2nd hierarchies, creating ...

| | | | | |
|--|--------------------------------------|--|---------------------------------------|---|
| ... during the age of : | <i>Polaris</i> | <i>Hyperboreis</i> | <i>Lemuris</i> ' 1 st half | <i>Lemuris</i> ' 2 nd half, <i>Atlantis</i> , and <i>Post-Atlantis</i> ... |
| ... iterating : | <i>OLD SATURN</i> | <i>OLD SUN</i> | <i>OLD MOON</i> | <i>EARTH</i> ... |
| ... on creation day no. : | earlier than the 1 st one | earlier and on the 1 st one | on the 2 nd one | from the 3 rd to the 7 th one, and all the time after ... |
| ... the physical elements : | warmth / fire | + gas-like / air-like | + liquid / watery | + solid / earthy ... |
| ... developing consistency: | <i>mineral-physical I</i> | <i>mineral-physical II</i> | <i>mineral-physical III</i> | <i>material</i> = <i>mineral-physical IV</i> ... |
| ... with today's senses : | just to be felt | {+ to be smelled ?} | {+ to be heard ?} | + visible. |
| From what existed before there separates : | light | + gas | + water | + <i>matter</i> ... (KJV I:3 ; 6-7) (R.Steiner 122:68 , 69 , 70 , IV : 8/19/1910). |
| ... developing species souls of plants : | {primordial} plants | water plants | terrestrial plants. | (KJV I:11) (R.Steiner 122:68 , 69 , 70 , IV : 8/19/1910). |
| ..and animal species souls: | none | none | animals in air & water | terrestrial animals. (KJV I:20 ff) (R.Steiner 122:72 f, IV : 8/19/1910). |
| Incorporating, | minerals | plants | animals | humans : reversing the original sequence. |

I. Graphs, Diagrams, Spreadsheets, Cues

(D) After the 7th creation day :

| | In paradise | After the expulsion from paradise | |
|---|--|---|---|
| ... during the : | late Lemurian age | Atlantic age | Post-Atlantic age... |
| ... helped by angels in the broad sense : | 1 st grade | 2 nd grade | 3 rd grade ... |
| ... = : | spirits of personality, or of orbits | archangels | angels in the strict sense ... |
| ... also called : | primordial powers, primordial beginnings, archai, spirits of time, Dhiyani-Buddhas, Venus-sons /-spirits (physical bodies with souls). | archangeloi, fire spirits, peoples' spirits, Bodhisattvas, Mercury-sons /-spirits (physical bodies with souls). | Angeloi. |
| Clairvoyantly they are to be detected : | in lightnings and fire | in wind and fire | “in running or drizzling water, in water dissolving in the haze, furthermore in the winds of the air, and in lightnings flashing in the air”. |
| They guide : | the human physical bodies, regulating all mankind's conditions on Earth. | the human physical bodies and ether bodies, ensouling leaders of humanity : Manu, the holy Rishis. | the human physical bodies and ether bodies, ensouling leaders of humanity and of religions. They keep every single person's memory from incarnation to incarnation as long as they cannot do so themselves. |
| | (R.Steiner 110:54 , III : 4/14/1909 ; 104 f , 119 ff , VI : 4/15/1909 ; 129 , 131 f) , VII : 4/16/1909 . | (R.Steiner 110:54 , III : 4/14/1909 ; 103 f , 117 f , 119 f , VI : 4/15/1909 ; 121 , 128 , 132 f) , VII : 4/16/1909 . | (R.Steiner 110:54 , III : 4/14/1909 ; 102 f , VI : 4/15/1909 ; 125 f , 127 , 135) , VII : 4/16/1909 . |

IV) PHANEROZOIC = Eon of «Visible Life» [538.8 million years ago until our days]

I.5. EARTH : Tabular Amendments

... for section D «Man and Matter», chapter 5 «During EARTH : Details»

In this chapter as well as in the next one references to Delor's volumes on Atlantis will be abbreviated «D.».

The *Polaric age*’

with *warmth ether* + *fire ether* , time originating.

| {8} mankind in <i>spiritual science</i> / {9} consciousness / {11} <i>Lemurian + Atlantic epochs</i> . | | | | | | | |
|--|--|---|--|---|---|--|------------------------------------|
| eon, era | geology | plants | animals | {8} | {9} | <i>spiritual beings</i> | {12} |
| Time originating ; (Space does not yet originate.) | The solar cosmos is a warmth sphere reaching as far as the later orbit of Saturn (D.6:140). It contains the 9 th up to the 7 th layer of the Earth's interior : the “Earth's brain” = “planet's spirit”, then above the “shatterer “, and above again the “Earth's mirror” (D.6:140). Saturn-separation. | Precursors of coelenterates [‘hollow intestines’] 7th Polaric epoch : fungi / slime molds ; root element of later plants (D.8:165 f). | Coelenterate Precursors (D.8:165 f) 3rd Polaric epoch : viruses ; 4th Polaric epoch : archaeobacteria ; 6th Polaric epoch : sponges ; 7th Polaric epoch : Cyanobacteria. | Man is the only creation. He only consists of the spiritual human core, the element warmth, and fire ether. | Deep trance consciousness as during OLD SATURN and in minerals today (D.6:216). | Seraphim {1.1}, spirits of love. Cherubim {1.2}, spirits of utmost wisdom. Thrones {1.3}, spirits of will, with Archai {3.1}, spirits of personality. | Earlier than the days of creation. |

The Hyperborean age'

adding gas-air + light-ether ; space originating.

1st – 6th epochs'

{12} creation days.

| eon, era | geology | plants | animals | spiritual beings | {12} |
|---|---|--|--|---|---|
| <p>(Space originating. Time cannot be estimated yet.)</p> | <p>“Fire-Earth” and “Fruit-Earth”= the 6th and 5th layer of the Earth’s interior, originate during all the Hyperborean age, while the Earth was still within the Sun (D.6:140). <u>Separations (D.8:74) :</u> 1st Hyperborean epoch : Jupiter separation. 2nd Hyperborean epoch : Asteroid separation. 4th Hyperborean epoch : Mars separation.</p> | <p>5th Hyperborean epoch : flowering plants originate from the Protostomia {‘mouth earliest’} = “blossom people” (D.6:208 , D.8:74) = “blossom animal” (D.8:111).</p> | <p>1st Hyperborean epoch : tunicates, e.g. sea squirts, separate from the other chordates. 3rd Hyperborean epoch : worms and mollusks [snails, shells, and squids] separate from the other Protostomia (D.8:74). 5th Hyperborean epoch : arthropods [insects, millipedes, crustaceans such as crabs, goose barnacles], arachnids [spiders, scorpions, mites] separate from the other Deuterostomia [‘anus earliest’] (D.8:120f).</p> | <p>In addition : dominions {2.1} = spirits of wisdom, with archangels {3.2} = fire spirits.</p> | <p>Earlier than the days of creation.</p> |

IV) PHANEROZOIC = Eon of «Visible Life» [538.8 million years ago until our days]

The Hyperborean age - 7th epoch [?4570 - 720? million years ago]'

{3} model year / {8} mankind in *spiritual science* / {9} consciousness / {10} *spiritual beings* / {12} creation days.

| eon, era | million years | {3} | geology | animals | {8} | {9} | {10} | {11} |
|--|----------------------------------|---------------|---|---|---|--|--|--|
| I) HADAIC «eon alike to Hades» | ?4580 - 4000? million years ago | 1/1 – 2/17 | Solar system ?4,6? billion years old, Earth ?4,57? billion years old. Moon rock dated ?4,527? billion years old [plus minus 10 million years] : It may however have originated within the Earth : age =/= birth (<i>D.7:12</i>). - In the same way Earth rock may have originated within the Sun already. | Echino-dermata [‘spiked skin’] [sea urchins, starfishes, sea cu-cum-bers] | Earliest anlagen of the sentient soul (<i>D.7:180</i> , <i>D.8:66</i>). | Dreamless deep sleep as during OLD SUN and in plants in our days (<i>D.6:216</i>). | In addition : dominions {2.1} = spirits of wisdom, with archangels {3.2} = fire spirits. | 1st crea-tion day : «Let there be light : and there was.» [KJV I:3]. |
| II) ARCHAIC «primordial eon» | ?4000 - 2500? million years ago | 2/17 – 6/16 | Moon separation beginning (<i>Bosse 2012:104</i>). | -separate from the other | | | | |
| III) PROTERO-ZOIC «eon of early life» | ?2500? – 538.8 million years ago | 6/16 – 11/19 | | Deutero-stomia (<i>D.7:362</i> , <i>D.8:120</i>). | | | | |
| - Paleo-Proterozoic | ?2500 – 1600? million years ago | 6/16 – 9/5 | Snowball-Earth : Paleo- Proterozoic glaciation = archaic ice age = Huronic ice age [2,300 – 2,000 million years ago] (<i>D.6:108</i>). | | | | | |
| - Meso-Proterozoic | ?1600 – 1000? million years ago | 9/5 – 10/12 | | | | | | |
| - Neo-Proterozoic | ?1000? - 541 million years ago | 10/12 – 11/19 | Sun separation completed (<i>D.7:176</i>). | | | | | |

I. Graphs, Diagrams, Spreadsheets, Cues

The Lemurian age [?720? - 66 million years ago]’

developing liquids and sound ether in addition.

Lemuris beginning [?720? – 538.8 million years ago]’

{1} eon, era, system, series /

{2} million years / {3} model year / {8} mankind in *spiritual science* / {9} / {10} *spiritual beings* / {11} *Lemurian + Atlantic epochs* / {12} creation days.

| {1} | {2} | {3} | geology | animals | {8} | consciousness | {10} | {11} | {12} |
|--|---------------------------------|---------------|---|---|--|--|---|--|--|
| III)Proterozoic - Neo-Proterozoic [continued] | | | | | | | | | |
| - - Cryogenian [the last but one period of the Neo-Proterozoic] | ?720 - 635? million years ago | 11/4 – 11/11 | “Water-Earth” = 4 th layer of the Earth’s interior (D.7:7). Snowball-Earth [750 – 580 million years ago] : 1 st Lemurian glaciation / rigidification (D.7:170 , 447). Sturtian glaciation [715 – 710 million years ago], Marinoan glaciation [until 635 million years ago] | Earliest molecular traces of multicell animals. Bacteria in rock cracks of the mid-ocean ridges (D.7:7). | Human “I”’s incarnate as the earliest anlagen of the reasoning and mind soul (D.7:180 , D.8:66). | Deep dreaming consciousness as during OLD MOON and in animals in our days. | In addition : mights {2.2} = spirits of motion, with angels {3.3} in the strict sense = gods’ messengers. | 1st Lemurian epoch : Cryogenian and Ediciarian (D.7:8). Sunrise on 9/21 (Lemurian dating) in the zodiac sign of Pisces (D.6:212 f). | ~ 2nd . creation day until ~ the end of the Cambrian (D.7:176) |
| - - Ediacaran End of [Neo-] Proterozoic, & Precambrian | ?635? – 538.8 million years ago | 11/11 – 11/19 | Cadomian orogeny [until the Cambrian, at the northern rim of Gondwana]. | Food whirlers : without jaws (D.7:7). | | | | | |

IV) PHANEROZOIC = Eon of «Visible Life» [538.8 million years ago until our days]

IV) PHANEROZOIC = Eon of «Visible Life» [538.8 million years ago until our days]

IV a) Paleozoic = Era of «Ancient Life» [538.8 – 251.9 million years ago]

Early Lemuris {538.8 – 298.9 million years ago}’

{3} model year / {8} mankind in *spiritual science* / {11} Lemurian + Atlantic epochs / {12} creation days.

| system | {3} | geology | animals | {8} | {11} | {12} |
|--|------------------|---|---|---|---|---|
| - Cambrian 538.8 – 485.4 million years ago | 11/19 – 11/23 | The Sun separates Venus (<i>D.7:358</i>). Caledonian folding begins : Norway – Scotland – Appalachians (<i>D.7:6</i>). | Exoskeletons. Earliest mouths : devore + be devoured. Trilobites = relatives of woodlice. Worm-like preforms of fish, with suggested spines (<i>D.7:6</i>). | Human “I”s incarnate as the earliest anlagen of the consciousness soul (<i>D.7:180 , 326 ; D.8:66</i>). | 2nd Lemurian epoch : Cambrian and Ordovician (<i>D.7:8</i>). Sunrise on 9/21 (Lemurian dating) in the zodiac sign of Aquarius (<i>D.6:213 ; D.7:6 , 8 , 339</i>). | |
| - Ordovician 485.4 – 443.4 million years ago | 11/23 – 11/26 | The Sun separates Mercury (<i>D.7:358</i>). 2 nd Lemurian glaciation / rigidification (<i>D.7:170</i>). Caledonian orogeny : Norway – Scotland – Appalachians. South pole in the western Sahara (<i>D.7:6</i>). Ordovician ice age [460 – 430 million years ago]. - The O ₂ level of our days is attained (<i>D 7:6</i>). Middle of the Ordovician : The air and water spheres separate. Earliest wobbly ground. Variscan orogeny begins (<i>D 7:6</i>). | Similar to Nautilus (<i>D.7:6 , 339</i>). | | | ~ 3rd creation day : Ordovician until ~ middle Devonian (<i>D.7:176 , 311</i>). |

I. Graphs, Diagrams, Spreadsheets, Cues

{3} model year / {8} mankind in *spiritual science* / {12} creation days.

| system | {3} | geology | plants | animals | {8} | <i>Lemurian + Atlantic epochs</i> | {12} |
|--|---------------|---|---|--|---|---|---|
| - Silurian 443.4 – 419.2 million years ago | 11/26 – 11/27 | 1 st stage of air and water separation : primordial wobbly ‘ground’ begins settling down {from the life sphere = fog atmosphere} (D.7:112). | Earliest vascular plants : ~ 430 million years ago | Sea scorpions, fish without jaws, placoderms = armored fish, earliest genuine fish (D.7:6). Earliest insects. | | 3rd Lemurian epoch : Silurian until the 1 st half of the Devonian (D.7:311 , D.7:8). Sunrise on 9/21 (Lemurian dating) in the zodiac sign of Capricorn (D.6:213). | |
| - Devonian 419.2 – 358.9 million years ago | 11/27 – 12/3 | 2 nd stage (D.7:112) of air and water separation (D.6:314 , 440) : middle Devonian (D.7:110) : (quite wobbly) ground originating (D.7:262). Rainfall from the fog atmosphere into the flat seas ; not however staying in the ocean basins, these are blazing hot (D.6:155 , D.7:163). Variscan orogeny [until the Triassic] = Collision of Africa and Europe (D.7:35 f) : South Asia and north Asia ; south continent Gondwana and north continent Laurasia (D.7:278). Uralic orogeny (D.7:5). | | Heyday of fish (D.7:262). From the end of the Devonian (D.5a:322) : Earliest amphibians = lung breathing begins (D.6:213). Amphibians (D.7:112). Arthropods on the ground (D.7:6 , 8). | Human Is incarnate as astral bodies (D.7:180 , D.8:66). | 4th . Lemurian epoch : 2 nd half of the Devonian until the 1 st half of the Permian (D.7:8 , 163). Sunrise on 9/21 (Lemurian dating) in the zodiac sign of Sagittarius (D.6:213 , D.7:8). | ~ 4th creation day : ~ 2 nd half of the Devonian until the 1 st half of the Carboniferous (D.7:176). |

IV) PHANEROZOIC = Eon of «Visible Life» [538.8 million years ago until our days]

{3} model year

| system | {3} | geology | plants | animals | mankind in <i>spiritual science</i> | creation days |
|--|-------------------|--|--|--|---|--|
| - Carboniferous 358.9 – 298.9 million years ago | 12/3 – 12/7 | 3 rd Lemurian = permo-carboniferous glaciation / rigidification until the Permian (<i>D.7:170 f.</i>) = Karoo ice age [360 – 260 million years ago] Variscan orogeny [until the Triassic] = Collision of Africa and Europa (<i>D.7:35 f.</i>) Uralic orogeny beginning (<i>D.7:5</i>). | Fern / horsetail / lycopod woods [→ stone coal] (<i>D.7: 199</i>). | Middle of Carboniferous : 3 rd stage or air and water separation (<i>D.7:112</i>) : Transition from amphibians to reptiles (<i>D.6:421</i>). Giant dragonflies (<i>D.7:199</i>). | The breath of life is breathed into the precursors of man, as yet without an “I”, containing everything man had attained during all the creation days, and which had existed so far spiritually only. As the 12 primordial peoples had the breath of life breathed into them in one act each they originate one by one (<i>D.5b:172</i>). Human Is incarnate as ether bodies (<i>D.7:180 , D.8:66</i>). “As however the first three primordial peoples incarnated earlier than the Moon separation with very few individuals each time, we need to admit : For them the 5 th creation is earlier ; it has been emphasized many times that the creation days are not time spans but processes which can only roughly be pressed into certain time spans.“ (<i>D.7:181</i>). <u>7 epochs of primordial peoples</u> (<i>D.5a:92</i>) : {1 st half = up to including the Permian: on Pangea ; 2 nd half = from the Triassic: <u>on Atlantis ?</u> } : <u>1st primordial people</u> (people of Libra) just 7 - 8 % of the souls, moved to Saturn, Jupiter, or Mercury (<i>D.5a:99</i>), incarnated in middle Carboniferous { ~ 330 million years ago } in “western Siberia”, merging later into the 3 rd primordial people, and becoming extinct during the fire catastrophe at the end of Lemuris (<i>D.5a:92</i>). → from the residual energies → to South America during the primordial Turanic epoch (<i>D.5a:92 f.</i>). | ~ 5th creation day : ~ 2 nd half of the carboniferous + 1 st half of the Permian (<i>D.7:172 , 176 , 182</i>). From the middle of the carboniferous : Jehovah (<i>D.6:442</i>) “formed man of the dust of the ground, and breathed into his nostrils the breath of life ; and man became a living soul.”[KJV 2:7] (<i>D.6:440 f , D.8:66</i>) : ~ from the middle of the Carboniferous until the end of the 2 nd Atlantic epoch [~ 37 million years ago] (<i>D.5b:172</i>). |
| - Transition Carboniferous - Permian 289.9 million years ago | 12/7 | | | | <u>2nd primordial people</u> (people of Scorpion) = Papuans / pygmies, 3 % remained on Earth, the rest moved to Neptune or Uranus (<i>D.5a:98</i>), incarnating at the transition from the Carboniferous to the Permian in “North America” (<i>D.5a:92</i>) → becoming the Ainu much later (<i>D.5a:98</i>). | |

I. Graphs, Diagrams, Spreadsheets, Cues

Lemuris - Middle - Moon separation completing‘

{3} model year / {12} creation days.

| system | {3} | geology | animals | mankind in <i>spiritual science</i> | {12} |
|---|----------------|--|--|--|--|
| - Permian 298.9 – 251.9 mil- lion years ago early Per- mian | 12/7- 12/11 | Uralic orogeny = collision Eu- rope – Siberia (D.7:5 , 11 , 35 f). Pangea’s decay begins (D. 7:11). | Early Permian : cold-blooded Saurians (D.6:202). Therapsids [= mammal-like- reptiles] (D.7:5). | Souls returning from other planets (D 5a:95). Sun human = pre-humans from the Sun oracle in paradise = Palestine (D.5b:275) : Quite a few people from the primordial peoples no. 1, 2, and 3 , the descendant of those who had survived incarnated during the Moon separation - (D.6:320) in spite of the hardened Moon forces - and incarnating exclusively in the line of the Sun humans ever since (D.6:91). <u>3rd primordial people</u> (people of Sagittarius) = Negritos, 1 % of them staying on Earth, the rest moved to Venus (D.5a:98), incarnate during the beginning of the Permian in the area of Japan (D.5a:92 , D.7:221 , 240) cannot keep up there, → move to Palestine / paradise , merging there with the Sun humans (D.7:221 f), → North America [200 thousand years ago] (D.5a:57) → Huns (D.5a:98), Cushites =/= 11 th primary people. | Core time of the 5 th creation day (D.6:420). |

IV) PHANEROZOIC = Eon of «Visible Life» [538.8 million years ago until our days]

{3} model year / {11} Lemurian + Atlantic epochs / {12} creation days.

| system | {3} | geology | animals | mankind in <i>spiritual science</i> | consciousness | {11} | {12} |
|--|----------|--|---|---|--|--|---|
| middle Permian | | <p>Pangea's drifting together completed (<i>D.6:10</i>).</p> <p>4th stage of air and water separation (<i>D.7:112</i>) = final Moon separation (<i>Bosse 2012:104 ; D.6:138 , 199 , 213 ; D.7:5 , 9 , 12</i>).</p> <p>The Earth's axis positions anew until the beginning of the Jurassic (<i>D 6:462</i>).</p> <p>After the Moon separation : The Earth gets damp = 3rd layer of the Earth's interior (<i>D.6:139f</i>).</p> | <p>Warm-blooded : saurians, birds (<i>D.6:201f</i>) . Most extensive mass extinction Fig. D.5.5.</p> <p>Swimming saurians, great sauropods, flying saurians, turtles (<i>D.6:435</i>).</p> <p>Middle Permian : birds, early mammals (<i>D.6:202</i>).</p> <p>Second most extensive mass extinction.</p> | <p>Man straightens up until the middle of the Jurassic (<i>D.6:463 , D.7:9</i>), corresponding to mankind's birth (<i>D.6:423</i>).</p> <p>Human "I"s begin incarnating as physical bodies : just in warmth first, and probably in the air, too, at the transition from the 6th to the 7th creation (<i>D.7:180 , D.8:66</i>).</p> | <p>Dreamy image consciousness similar to a newborn's and developing to babies* of up 1 ¾ years {as vertebrates in our days except for primates} decreases by and by, persists however all the Atlantic age (<i>D.6:216</i>).</p> | <p>2nd half of Lemuris : 5th Lemuris epoch : 2nd half of the Permian until the Triassic ? (<i>D.7:8</i>).</p> <p>Sunrise on 9/21 (Lemurian dating) in the zodiac sign of Scorpion (<i>D.6:213 , 422</i>).</p> | <p>Middle of Lemuris : Lemurian original sin / fall of mankind / from grace (<i>D.6:68</i>).</p> |
| late Permian {up to 251.9 million years ago} = Proterozoic ending . | 12.11.25 | <p>Earliest cracks in Pangea (<i>D.6:10 , D.7:11</i>).</p> | | <p>Initiating human sexes differentiating (<i>D.6:213 , D.7:8</i>).</p> <p>4th primordial people (people of Capricorn) = Bushmans (Khoi-San) : just 10 % of them incarnating in "North America" (<i>D.5a:92</i>) (Rest staying on Mars (<i>D.5a:98</i>)) → Papuans (<i>D.5a:98 , D.7:240</i>).</p> | | | <p>~ 6th creation day : from Moon separation (<i>D.7: 176 , 186</i>).</p> |

IV b) Mesozoic = Era of «Intermediate Life» {251.9 - 66 million years ago}

Late Lemuris - after the Moon Separation {251.9 - 66 million years ago}'

{3} model year

| system | {3} | animals | mankind in <i>spiritual science</i> | creation days. |
|---|---------------------|--|---|--|
| - Triassic 251.9 – 201.3 mil- lion years ago Triassic beginning: | 12/11 – 12/14 | Earliest ptero- saurians [flying saurians] ~ 228 million years ago. Earliest mam- mal precursors ~ 220 million years ago (D.6:202). | <u>5th primordial people</u> (people of Aquarius) = Negroids / Bantu , com- ing from Uranus (D.5a:98), incarnating in Persia at the beginning of the Triassic (D.5a:92 , D.6:437 , D.7:240), having the breath of life breathed into them there (D.6:435), → migrating from Australia → Africa > 300 thousand years ago, South Africa → Kenia → Ethiopia → Sudan > 133 thousand years ago (D.5a:54 f), → Atlantis > 123 thousand years ago, → south Europe 105 thousand years ago, → Israel 98 thousand years ago, → Egypt 89 thousand years ago, → Ethiopia 84 thousand years ago (D.5a:55). | Core time of the 6 th creation day (D.6:420). Luciferic original sin / fall of mankind / from grace (D.6:377 ff), taking place anew however for every primordial people (D.6:379). |
| Middle of the Tri- assic : | | | <u>6th primordial people</u> (people of Pisces) = Native Americans : an original ethnic group i.e. existing in the Polaric and Hyperborean ages already without an “P” (D.6:427) ; their souls coming from Venus (D.5a:98 , D.6:427) , incarnate in Palestine at the middle of the Triassic (D.5a:92 , D.6:427 f) / Israel (D.7:240) → Firbolg (D.5a:98) / Satyrn / Zappa → Homo erectus (D.5a:63). | |
| Triassic ending : | | | | Tree of [the] knowledge of good or evil (D.6:401). |
| - Transi- tion Trias- sic - Jurassic | 12/14 | | <u>7th primordial people</u> (people of Aries) = Firbolg / Satyrn / Zappa, coming from Mars (D.5a:98), incarnate in China at the transition from the Triassic to the Jurassic as Cro-Magnon precursors (D.5a:92 , D.7:240) → Cro-Magnon (D.5a:98) = Homo sapiens 1.8 – 1.6 million years ago (D.5a:61) → Persia 340 – 325 thousand years ago, South Europe, North Africa 300 – 125 thousand years ago (D.5a:56). | Expulsion from Paradise (D.7:38). Cain is born as a precursor of the 5 th primordial people in Asia Minor, Abel in Paradise = Palestine as a precursor of Huns {3 rd primordial people} (D.6: 356). Cain slays Abel, after incarnated migrations partly to- gether and partly separated, in south-east Asia (D.6:324 , 357 . 419). |

{3} model year / 11} Lemurian + Atlantic epochs.

IV) PHANEROZOIC = Eon of «Visible Life» [538.8 million years ago until our days]

| system | {3} | geology | plants | animals | mankind in <i>spiritual science</i> | {11} |
|--|---------------------|--|--|--|--|---|
| - Jurassic 201.3 - 145 million years ago : | 12/14 – 12/19 | The Atlantic ocean opens up. - Equilibrium between the forces of the separated Sun and the separated Moon (D.7:9). | Earliest grass, woods of palm trees and ferns trees (D.6:168). | Earliest anlagen of eyes (D.6:399). Earliest calcified sea fauna : mussels, foraminifers [unicellular organisms with a cell nucleus and a calcified shell] (D.6:156). Earliest terrestrial animals : reptiles, birds, early mammals (D.6:168). | | 6th Lemurian epoch. Sunrise on 9/21 (Lemurian dating) in the zodiac sign of Libra (D.6:213 , D.7:8). |
| Jurassic beginning | | The Earths axis moved since the Moon separation (D.6:462). Alpine orogeny. | | | Human sexes differentiating (D.6:267 ff, 377 , 421 , 424). Sun people in Lemuria (D.5b: 275), just the Cainite core moves to the Land Nod in the extreme north (D.6:91). | |
| Middle of the Jurassic | | Gondwana → South America & Africa as well as Madagascar & India & Australia & Antarctic , separating (D.6:10) as long as the Cretaceous (D.6:12). | | | Man completes straightening up (D.6:319 , 422) ; corresponding to a one-year-old of today (D.6:422) . Human sex differentiation completed (D.6:464). <u>8th primordial people</u> (people of Taurus) : Negroid / Bantu precursors (D.6:332) : = Cro-Magnon, coming from Vulcan (D.5a:98), incarnate in Central America in the middle of the Jurassic (D.5a:92 , D.6:332 , D.7:240) → Bantus (D.5a:98). | |

I. Graphs, Diagrams, Spreadsheets, Cues

{3} model year / {6} animals.

| system | {3} | geology | {6} | mankind in <i>spiritual science</i> | creation days |
|----------------------------------|-------|---|-----|--|---|
| Jurassic ending : | | | | Eva incarnates in Thule {North Atlantic} (D.6:359). | The Christ's 1 st pre-Christian sacrifice / gift (D.6:470) endows mankind with sensory organs (R.Steiner 148:193 f, XI : 2/10/1914). |
| Transition Jurassic-Cretaceous : | 12/19 | Atlantis : south Atlantic part originating (D.6:373) , in there rectangular lines of a ground plot ("house layout") at {fiery-blazing ?} 5,300 m below sea level when the Atlantic did not contain water yet (D.6:373 ff). | | <u>9th primordial people (Gemini) = Marama / Mongols</u> , coming from Mars (D.5a:98), incarnate in part as Negrito precursors on the Arab peninsula at the transition from the Jurassic to the Cretaceous (D.5a:92 , D.7:240) → ~ 400 – 320 thousand years ago in Central Asia / India , there it is extinguished completely in the end-Lemurian fire catastrophe (D.5b:311). Another part survives migrating ~ 115 thousand years ago → South Africa (D.5b:311), Tristan da Cunha 112 thousand years ago, → Atlantis 109 thousand years ago (D.5a:54 ff) →Negritos (D.5a:98 , D.6:259 ff). | |

IV) PHANEROZOIC = Eon of «Visible Life» [538.8 million years ago until our days]

{3} model year / {11} Lemurian + Atlantic epochs.

| system | {3} | geology | plants | animals | mankind in <i>spiritual science</i> | {11} |
|---|---------------------|---|--|--|---|--|
| - Cretaceous 145 - 66 million years ago | 12/19 - 12/25 | From the protein atmosphere / life sphere the protein part condenses becoming today's mineral oil (D.6:162). | | Fish, reptiles, amphibiae, birds, mammals | 7. Lemuris-Epoche = Jungfrau-Zeit (D.7:8). Sonnenaufgang am 21.9. (lemur. Zählung) im Sternzeichen Jungfrau. | |
| Cretaceous last third : | | During the last third {~ 92 – 66 million years ago} earliest puddles of water on the deep-sea basins' ground (D.6:155 ; D.7:262). | | | | |
| Cretaceous ending : | 12/25 | Australia & Antarctic separate from India (D.6:11). | Earliest blossom plants, earliest grass. | Last mass extinction (D.6:37) by „evil cravings in the human soul“ (R.Steiner 109:237) / after a meteorite impact in Yucatan + the end-Lemurian fire catastrophe somewhat later (D.5a:207) = fire storm (D.6:6) = Flood (D.6:18 , 28). | <u>10th primordial people</u> (people of Cancer) = Huns coming from Jupiter and Venus (D.5a:98), incarnate in North America (D.5a:92) → precursors of Native Americans (D.5a:98 , D.7:240). Parts move from North America → Asia → Lemuria , are decimated there by the end-Lemurian fire catastrophe, the survivors → Kazakhstan (D.6:88). | Lemuris ending : fire catastrophe (D.5a:207), = fire storm (D.6:6) = end-Lemurian Flood (D.6:18). |
| Transition Cretaceous-[Tertiary] / Paleogene : | | The <i>Lemurian</i> protein atmosphere = <i>life sphere</i> is completely purified of proteins (D.3:410). | | | The Sun humans migrate during the end-Lemurian fire-catastrophe from Lemuria → Kazakhstan (D.5b:275 , D.6:91). | |

IV c) **Cenozoic** «Era of Recent Life» [from 66 million years ago up to our days]’

The Atlantic age [66 million years ago – 11.7 thousand years ago]’

Solid matter developing in addition.

{3} model year / {8} mankind in *spiritual science* / {12}

| system | {3} | geology | animals | {8} | consciousness | creation days |
|---|--------------------|--|---|---|--|---|
| [Tertiary] 66 – 2.588 million years ago | 12/25 – 12/31 19 h | Antarctic ices over. The ground is soft / liquid from the beginning of Atlantis (<i>D.6:139</i>) = 2 nd layer of the Earth’s interior. The life sphere does not contain proteins any more, consisting of fog only (<i>D.3:410</i>). | Fossils of ungulates [hoofed animals], rodents, carnivorous mammals (<i>D.6:175</i>). - Human food from dead animals for the first time (<i>D.6:367</i>). | Language originates from singing (Jubal’s influence) (<i>D.3:409</i> , <i>D.5b:286</i> , 290). | Waking daytime consciousness and group “I”s unfold by and by the same as with primates ; dream-like image consciousness diminish by and by up to the end of the Atlantic age (<i>D.6:216</i>). | The Christ’s 2 nd pre-Christian sacrifice / gift - at the beginning of Atlantis - endows man with life organs (R.Steiner 148:193 f, XI : 2/10/1914), and heals the life body / ether body from self-indulgent passions (<i>D.6:76</i> , 81 , 84). |
| [Old Tertiary] Paleogene «old ancestry» 66 – 23.03 million years ago | 12/25 – 12/29 | | | | Clear daytime or waking consciousness originating. | |
| - Paleocene «old & unusual» 66 – 56 million years ago | 12/25 – 12/26 | | Monkeys, tarsiers ; lemurs, Lori-likes. | All the peoples in Kazakhstan including the Papua-precursors (<i>D.5a:175</i>). | Consciousness and thinking capacity correspond to a two-years-old of our days (<i>D.6:422</i>). Lemurian {situational, unthinking} capacity to remember declines. | 2 nd pre-stage to the mystery of Golgotha (<i>D.6:75</i>). |
| - Transition Paleocene -Eocene : | 12/26 | Greenland and Europe separate, the North Atlantic originates (<i>D.6:11</i>). | | | | |

IV) PHANEROZOIC = Eon of «Visible Life» [538.8 million years ago until our days]

{3} model year.

| system | {3} | geology | plants | animals | Lemurian + Atlantic epochs |
|---|---------------|--|--|---|---|
| - Eocene «dawn of the unusual» 56 – 33.9 million years ago Eocene beginning : | 12/26 – 12/28 | Australia and Antarctic separate (D.6:11). Pangea's decay ending (D.6:11). Atlantis : north part originates when Greenland and Europe are torn apart (D.6:373). | | Primordial whale. Old World monkeys and New World monkeys separate 46 million years ago. | <u>11th primordial people</u> (people of Leo) = Kuschites , coming from Mercury (D.5a:98), incarnate from the 3 rd primary people in “ New Guinea ” at the beginning of the Eocene (D.5a:92) → Tansania, South Africa 180 - 75 thousand years ago (D.5a:53 f) → Khoi / San (D.5a:67) / Bushmans (D.5a:98) =/= 4 th primordial people. |
| Eocene ending 33,9 million years ago | 12/28 | | | | <u>12th primary people</u> (people of Virgo) : Ainu (D.5a:77), coming from Saturn (D.5a:98 , D.5b:182), incarnate in Australia at the end of the Eocene = Jered-era (D.5a:92 , D.5b:182 , D.7:240) → Aborigines-precursors (D.5b:21) / into the 6 th primordial people's bodies = Firbolc-precursors (D.5b:180) |
| - Oligocene «little unusual» 33.9 – 23.03 million years ago Oligocene beginning : | 12/28–12/29 | Iceland originating (D.6:373). | The life sphere dies because the protein part had separated. | Old World monkeys and New World monkeys separate (D.5a:141). | |

I. Graphs, Diagrams, Spreadsheets, Cues

{3} model year / {8} mankind in *spiritual science*

| system, series | {3} | mankind in sciences | {8} | <i>spiritual beings</i> | <i>Lemurian + Atlantic epochs</i> | creation days. |
|---|---------------------------------|--|--|---|---|--|
| [Late Tertiary] - Neogene «new ancestry» 23.03 – 2.588 million years ago | 12/29 – 12/31 19 h | | | | | |
| - - Miocene «less unusual» 23.03 – 5.333 million years ago | 12/29 - 12/31 13 h | Sahelanthropus «Sahel human» tchadensis extinct ~ 7 million years ago : walking upright → pre-human ? Orrorin tugenensis «fossil from Tugen» : extinct ~ 6 million years ago. Ardipithecus ramidus «ground ape at man's root» extinct 6-4 million years ago. | Atlantis almost depopulated : Enoch and Methuselah eras <i>(D.5a: 174f).</i> | Ahriman = Angra mainju = Mephisto(pheles) = spirit of the cold <i>(D.5a:291 , 293 , 298).</i> Sorat <i>(D 5a:298).</i> | Tlavatlis (I) epoch [~ 26 – 14 million years ago] , 4th Atlantic epoch : abelitic Henoah [= Jered's son, Mahalalel's grandson], maximum effect ~ 24 – 20 million years ago <i>(D.5a:177)</i> . Sunrise on 3/21 (Atlantic dating) in the zodiac sign of Scorpion <i>(D.6:209)</i> . Tlavatlis (II) epoch [~ 14 – 7 million years ago] = 5th Atlantic epoch : Methuselah [= Henoah's son], maximum effect ~ 10 million years ago. Sunrise on 3/21 (Atlantic dating) in the zodiac sign of Libra <i>(D.6:209)</i> . Toltec epoch [~ 7 – 3 Million years ago] = 6th Atlantic epoch : (D 5b:65) : abelitic Lamech [= Methuselah's son], maximum effect ~ 4 million years ago <i>(D.5a:177)</i> . Sunrise on 3/21 (Atlantean dating) in the zodiac sign of Virgo <i>(D.6:209)</i> . | Middle of the Atlantic age : Ahrimanic original sin / fall of mankind / from grace <i>(D.6:379)</i> → Atlantic Floods at the end of the Atlantic age <i>(D.6:68)</i> . |

{3} model year / {7} mankind in sciences / {8} mankind in *spiritual science* / {10} *spiritual beings* / {12} creation days.

IV) PHANEROZOIC = Eon of «Visible Life» [538.8 million years ago until our days]

| series | {3} | geology | {7} | {8} | {10} | Lemurian + Atlantic epochs | {12} |
|---|------------------------------|--|---|--|------|---|------|
| - - Pliocene «more unusual» 5.3 – 2.588 million years ago early Pliocene : | 12/31 13 – 19 h | Arctic ices over, too. So far last polarity reversal of the electro-magnetic field. Earliest high valleys [up in the mountains, little erosion] (<i>D 6:155</i>). | Australopithecus «southern ape», east + South Africa, 4 – 2 million years ago, extinct. | Native Americans (Toltecs) on Atlantis. (<i>D.5a:174</i>). | | 7th Atlantic epoch = Noah's era [~ 2,8 million years ago - 10,969 thousand years ago], maximum effect 990 thousand years ago. | |
| late Pliocene : | | Earliest gashes [V-shaped valleys : slopes wearing away and deep erosion in equilibrium] (<i>D.6:155</i>). 1st Atlantic Flood [2,8 million years ago] (<i>D.5a:171 f, 178</i>). | | | | | |

{3} model year / {7} mankind in sciences / {8} mankind in *spiritual science* / {9} consciousness / {11} Lemurian + Atlantic epochs.

| system | {3} | geology | {7} | {8} | spiritual beings | {11} | creation days |
|--|--|---------|-----|---|--|------|---|
| - Quaternary 2,588 thousand years ago up to our days | | | | | In addition Elohim {2.3} spirits of Form. | | |
| - - Ice Age = Pleistocene «the newest» 2,588 – 11.7 thousand years ago : | 12/31, 19 h until 80 sec. to New Year's Eve | | | The 'I' originating (<i>R.Steiner 103:172 , IX : 5/29/1908</i>). | | | Today's human races forming (<i>D.5a:140</i>) after Noah's Ark from Noah's sons Sem {II}, Ham {II} and Japhet {II} (<i>D.5b:7</i>). |

I. Graphs, Diagrams, Spreadsheets, Cues

{3} model year / {8} mankind in *spiritual science* / {11} *Lemurian + Atlantic epochs*.

| series | {3} | geology | mankind in sciences | {8} | {11} |
|---|--|--|--|--|--|
| - - - Gelasian 2,588 – 1,800 thousand years ago : | 12/31 19 h until 3+ 3/4 hours to New Year's Eve | The ground and ice are soft up to the Ice Ages (D.5a:295). BIBER ICE AGE {I} [2,588 – 2,400 thousand years ago] / (D.5a:152 , 171 f : 2,800 – 2,400 thousand years ago). Biber- Danube warm interval {2,400– 2,000 thousand years ago}. 2 nd Atlantic Flood [2,000 thousand years ago]. DANUBE ICE AGE {I} [2,000 – 1,820 thousand years ago] / (D.5a:152 , 171 f : 2,000 – 1,820 thousand years ago). Tiglien = Tegelen warm interval, [2,000 – 1,600 thou- sand years ago] / (D 5a:172 : 2,400 – 2,000 thousand years ago). BIBER ICE AGE {II} [1,800 – 1,600 thousand years ago]. | East Africa : ~ 2.500 – 1.800 thousand years ago : Homo habilis / H. rudolfen- sis. Chopper = precursors [unifaced] of hand-axes [=bifaces]. Handling fire ~ 1.900 thousand years ago. East & South Africa : from ~ 1.900 – 1.400 thousand years ago : Telanthro- pus «man aiming» capensis ; ~ At- lanthropus mauritanicus in Muascar, Oran, Algeria ; ~ Homo ergaster «work- ing man» - with stone tools ? ; ~ Homo erectus, all the following human forms evolving from him. | Convened on At- lantis during the Biber Ice Age : Ainu, Natve Americans, Papuas, Negroids, Khoi-San, Firbolg, Marama (D.5b:8). All of them leaving Atlantis . Man develops „flesh and bones“: „cartilage con- densed“ to bones (R.Steiner 103:113 , as quoted by D.5a:284). | Primordial Turanians [2.800 – 2.000 thousand years ago] = part 1 of the 7 th Atlantic epoch [~ 2.800– 10.969 thousand years ago] = Noah's era : [Lamech's son] = Manu [990 thousand years ago]. (D.5a:61 , 68 , 177 , D.5b:46 ff). Primordial Semites [2.000 – 475 thousand years ago] = part 2 of the 7 th Atlantic epoch. |

IV) PHANEROZOIC = Eon of «Visible Life» [538.8 million years ago until our days]

| {3} model year / {8} mankind in <i>spiritual science</i> / {11} Lemurian + Atlantic epochs. | | | | | |
|---|--|--|---------------------|-----|------|
| subseries | {3} | geology | mankind in sciences | {8} | {11} |
| - - - Cal-abrian 1,800 - 781 thousand years ago | 3+ 3/4 hours until 1+ 1/2 hours to New Year's Eve | <p>BIBER ICE AGE {II} [1,800 – 1,600 thousand years ago] / (<i>D.5a:152, 171 f: Waal warm interval [1,820 – 1,600 thousand years ago]</i>).</p> <p>GUENZ ICE AGE [1,600 - 890 thousand years ago] (<i>D.5a:152, 171 f</i>).</p> <p>Biber-Danube warm interval [1,400 – 1,100 thousand years ago].</p> <p>Waal warm interval = Günz-Mindel warm interval [1,300 – 900 thousand years ago].</p> <p>DANUBE ICE AGE {II} [1,000 – 950 thousand years ago].</p> <p>3rd Atlantic Flood [890 thousand years ago] (<i>D.5a:171 f</i>).</p> <p>Cromer warm interval [800 – 490 thousand years ago] / (<i>D.5a:172 : 890 – 475 thousand years ago</i>).</p> | | | |

I. Graphs, Diagrams, Spreadsheets, Cues

{3} model year

| subseries | {3} | geology | mankind in sciences | <i>Lemurian + Atlantic epochs</i> |
|---|---|--|---|--|
| <p>- - - Middle Pleistocene = Chibanian = [Ionian, name unused] 781 – 126 thousand years ago</p> | <p>1 1/2 hours until 1/4 hour to New Year's Eve</p> | <p>CROMER COMPLEX = GUENZ ICE AGE in the Alps [786 – 300 thousand years ago] : (<i>D.5a:152, 171 f: Cromer warm interval [890 – 475 thousand years ago]</i>).</p> <p>Guenz-Haslach Interglacial = Guenz-Haslach warm interval [600 – 540 thousand years ago].</p> <p>HASLACH ICE AGE = Haslach Glacial = Haslach Complex [550–500 thousand years ago].</p> <p>Haslach-Mindel Interglacial / warm interval [~ 480 thousand years ago].</p> <p>MINDEL ICE AGE [460 – 400 thousand years ago] / (<i>D.5a:152, 172 : together with :</i>)</p> <p>ELSTER ICE AGE [400 – 320 thousand years ago] / (<i>D.5a:152, 171 f: [475 - 340 thousand years ago]</i>).</p> <p>4th Atlantic Flood [> 340 thousand years ago] (<i>D.5a:171 f</i>).</p> <p>Holstein warm interval = Mindel-Riß Interglacial in the Alps [340 – 325 thousand years ago] / (<i>D 5a:152, 171 f: [340 - 300 thousand years ago]</i>).</p> <p>5th Atlantic Flood [300 thousand years ago].</p> <p>SAALE COMPLEX = RISS IC AGE in the Alps [300 – 128 thousand years ago] / (<i>D.5a:152, 171 f: [300 - 130 thousand years ago]</i>).</p> | <p>Homo sapiens [> 300 thousand years ago] ; Steinheim skull [> 300 thousand years ago] : Homo sapiens and Neanderthal men.</p> <p>Homo neanderthalensis in Europe [200 – 40 thousand years ago] (<i>D.5b:50</i>).</p> | <p>Akkadians [475 – 115 thousand years ago] = part 3 of the 7th Atlantic epoch (= Noah's era [~ 2.800 - 10,969 thousand years ago]).</p> |

IV) PHANEROZOIC = Eon of «Visible Life» [538.8 million years ago until our days]

| subseries | {3} | geology | mankind in sciences | <i>Lemurian + Atlantic epochs</i> |
|--|--|--|--|---|
| - - - Late Pleistocene 126 – 11.7 thousand years ago | 1/4 hour until 80 sec. to New Year's Eve | 6 th <i>Atlantic Flood</i> [115 thousand years ago]. 7 th <i>Atlantic Flood</i> [43 thousand years ago]. 8 th <i>Atlantic Flood</i> [10,969 years ago]. | Middle-Paleolithic : hand-axes = bi-faces. [130 – 120 thousand years ago]. Late Paleolithic : lang narrow blades and knives from stone [40 thousand years ago]. | Mongols [115 – 10,969 thousand years ago] = vol. I , part 4 of the 7 th Atlantic epoch (= Noah-Ära [~ 2.800 - 10,969 thousand years ago]). Sunrise on 3/21 (Atlantic dating) in the zodiac sign of Leo (<i>D.5a:201</i>). |

The Post-Atlantic age [7227 BCE - 7893 CE in linear *Sun years*]*

Consciousness developing in addition

{3} model year / {11} *Lemurian + Atlantic epochs*

| subseries | {3} | geology | mankind in <i>spiritual science</i> | consciousness | {11} |
|---|----------------------------|--|--|--|--|
| - - - Post-Ice Age = Holocene «completely new» 11,7 thousand years ago : | 80 sec. to New Year's Eve. | (<i>D.5a:152</i>) : Ice Ages ended [11.2 thousand years ago], Warm age since. | Japhet becomes [10.800 BCE] progenitor of the Japhetites [Indo-Europeans ??] in Göbekli Tepe (<i>D.5a:273</i>). Sem and Ham respectively become [10.850 BCE] progenitors of the Semites and Hamites (Black-Africans) respectively on the Ararat mountain (<i>D.5a:273 f</i>). | 'I'-consciousness originating (<i>R.Steiner 103:172 ff, IX : 5/29/1908</i>). | Post-Atlantic cultural periods. |

I. Graphs, Diagrams, Spreadsheets, Cues

Cultural documents in the *Post-Atlantic age* : archeologically and paleo-anthropologically {thousand years ago = thousand years ago}

| South Africa : Cape province | North Africa ; Alaska | Indonesia | The Near East | South Europe | Middle & North Europe |
|---|--|---|--|---|--|
| Blombos cave : pierced shells, or with rests of red paint, ~ 75 thousand years ago. | Oued Djebbel Tebassa, Algerian- Tunisian border : perforated shell, 95 thousand years ago. | | Carmel mountain near Haifa : perforated shells in graves, interpreted as grave decoration, ~ 100 thousand years ago. | Spain : perforated / colored shells 120 – 115 thousand years ago. | |
| Pinnacle Point cave 3 B : lines painted in red hematite partly crossing each other, on a small fractionary piece of silcrete [hardening silicon dioxide minerals], ~ 73 thousand years ago. | | Sulawesi, Borneo : figurative views : handprints, 52 – 40 thousand years ago. | | Spain : Cantabria : La Pasiiega cave : hand prints and ladder drawings on cave walls, 66 – 64 thousand years ago. | |
| Diepkloof rock shelter : patterned line drawings on ostrich eggs (water containers) : earliest record of human symbols, ~ 60 thousand years ago. | | Sulawesi : cave painting animal-headed bipeds hunting, 44 thousand years ago. | | Italy : Apulia : grain gruel with nomads, ~ 32 thousand years ago. | Swabian Jura : pipes, Venus sculptures, lion man sculptures : music, art, cult evidenced ~ 42 thousand years ago. |
| | East Alaska : Yukon Flats National Wildlife Refuge : on an Porcupine River island fossil animal bones with claw marks which not by animal teeth, ~ 40 – 12 thousand years ago. | | | | Wolves domesticated : for game battue, ~ 40 thousand years ago. Cro-Magnon man : earliest Homo sapiens in Europe, 40 – 12 thousand years ago. |
| | | | New Stone Age = Neolithic : Jordan : sedentary man 17 thousand | Goat, sheep, cattle, pig domesticated 12 | Sedentary man, ~ 10 thousand |

IV) PHANEROZOIC = Eon of «Visible Life» [538.8 million years ago until our days]

| South Africa : Cape province | North Africa ; Alaska | Indonesia | The Near East | South Europe | Middle & North Europe |
|------------------------------|-----------------------|-----------|--|---|--|
| | | | <p>years ago. Baking bread ~ 14,4 thousand years ago. Livestock farming and agriculture ~ 12 thousand years ago. South Anatolia : Göbekli-Tepe : earliest temple-like worship site, 11.7 thousand years ago.</p> | <p>– 9 thousand years ago. Agriculture ~ 10 thousand years ago. (Plato : Atlantis' downfall ~ 11.5 thousand years ago).</p> | <p>sand years ago. Middle Stone Age = Mesolithic : little arrow tips, ~ 9.6 thousand years ago. New Stone Age = Neolithic : Linear Pottery culture : 7.6 – 6.9 thousand years ago.</p> |

I. Graphs, Diagrams, Spreadsheets, Cues

Cultural documents in the *Post-Atlantic age* : archeologically, esoterically, and historiographically'

| South, Central, North America | South Asia | Near East | Egypt | North Africa | South Europe | Central, North Europe | <i>Spiritual beings</i> | <i>Culture periods</i> |
|---|--|---|--|--------------|---|--|---|--|
| Ancestral Pueblo cultures [North American desert belt] Anasazi 7,000 – 1,500 BCE. | | Mesopotamia : Obed 5,500 – 3,500 BCE. | Neolithic cultures from ~ 5,000 BCE: | | Domesticated : chicken ~ 8,000 BCE. | | | 1 st = primordial Indian : 7,227 – 5,067 BCE. |
| | | Zarathustra = Zoroaster. Mesopotamia : Uruk 3,900 – 2,900 BCE: Kish 3,000 – 1,335 BCE: | Pre dynastic period from 4.000 BCE: | | Domesticated: horse 7,000 – 5,000 BCE. | Funnel Beaker / Megalith culture 6,200 – 4,800 BCE. | Ahura Mazda = Big Aura (<i>D.5a:291</i>). | 2 nd = primordial Persian : 5,067 – 2,907 BCE: |
| Central America : Maya culture 3,000 BCE - 900 CE. | Indus culture 2,800 – 1,800 BCE: Holy Rishis compose Vedas 1,500 – 900 BCE: | Bronze age from 5,000 BCE [Bronze = 90 % copper +10 % tin]. Ur 2,550 – 2,340 BCE: Akkad 2,340–2,200 BCE: Assur 1,800 – 609 BCE : Middle Babylon : Kassites 1,475 – 1,155 BE: New Babylon : Chaldeans 626–539 BCE: | Old empire ~ 2,707–2,216 BCE : Cheops' pyramid ~ 2,600 BCE: Middle empire ~ 2,137–1,781 BCE. New empire : ~ 1,550–1,070 BCE: Kings' valley : Ikhnaton ~ 1,351–1,334 BCE, Tutankhamen 1,332 – 1,323 BCE, Temple of Abu Simbel 1,264 -1,244 BCE. | | Bronze age 4,200 – 2,800 BCE. Iron age ~ 800 BCE - 0 CE. | Eastern Europe : Corded Ware Ceramic culture - / Battle Ax culture 4,800 – 4,200 BCE. Western Europe : Bell Beaker culture 4,600 – 4,200 BCE. | | 3 rd = Assyrian-Babylonian-Chaldean-Egyptian-Jewish/Hebrew : 2,907 – 747 BCE. |
| South America : Incas 13 th – 16 th century. Mexico : | | Old Persian empire : Achaemenids 550 – 330 BCE. Arabic peninsula : | Pharos of Alexandria 299 – 279 BCE. | | Pythagoras ~ 570 - 510 BCE. Socrates 469 | Iron age ~ 750 BCE – 5 th century CE. | | 4 th = Greco-Roman : 747 BCE. - 1413 CE. |

IV) PHANEROZOIC = Eon of «Visible Life» [538.8 million years ago until our days]

| South, Central, North America | South Asia | Near East | Egypt | North Africa | South Europe | Central, North Europe | <i>Spiritual beings</i> | <i>Culture periods</i> |
|-------------------------------|------------|---|-------|---|---|--|--|---|
| Aztecs 1325 – 1521 CE. | | Muhammad ~ 570 – 632 CE. New Persian empire : Sassans 224 – 651 CE. Academy of Gundeshapur: Al-Khwarizmi 780 – 835 / 850 CE. | | | – 399 BCE. Plato 428/7 – 348/7 BCE. Aristotle 384 – 322 BCE. Colossus of Rhodes 280 – 292 – 226 BCE. Ptolemy ~ 100 – ~ 160 CE. | | | |
| | | | | Al-Andalus 711 – 1,492 CE : Ibn Rushd = Averroes 1126 – 1198 CE. | | Albertus Magnus ~ 1200 – 1280 CE. Thomas Aquino 1225 – 1274 CE. | | |
| | | | | | Galileo Galilei 1564–1642 CE. | Jan Hus ~ 1369 – 1415 CE. Martin Luther 1483–1546 CE. | Christian Rosencreutz, created by Johann Valentin Andreae (1586–1654) 1616 | 5 th Anglo-Saxon-Germanic : 1413 – 3573 CE. In there : Anthropocene 1825 : 200 years. |

I. Graphs, Diagrams, Spreadsheets, Cues

| South, Central, North America | South Asia | Near East | Egypt | North Africa | South Europe | Central, North Europe | <i>Spiritual be- ings</i> | <i>Culture periods</i> |
|----------------------------------|------------|-----------|-------|-----------------|--------------|--------------------------|----------------------------------|------------------------|
| | | | | | | | in his “Chymical Marriage” | |

In the future : 6th . = *Slav culture period* : 3573– 5733 CE, and 7th = *American culture period* : 5733 – 7893 CE.

I.6. Ages in Keywords

This chapter should not be read through ! The same as the previous chapter it is meant to compare : What happened at the same time ? That is what the telegram style is for. Readable contexts are to be found in vol. I , part 2 , chapter D.5. «During *Earth* : Details». In there paleogeographic and anthroposophic contexts were joined concerning man evolving. So once more iterations cannot be avoided here. In fact they are intended - and ought to turn out as self-consistent as might be.

In the very first chapter A.1. «Is the Earth a Disc Really ?» we hinted that logical contradictions ought to be avoided as much as we can. In this text-chapter A.1. as well as in the previous table-chapter I.5. contradictions may not have been obvious among all the facts listed. In here however when presenting key words, logical contradictions appear clearly. During the *Polaric age* for instance time was to originate by and by - and still *Polaric epochs* are mentioned from the 3rd one on. Another example : All the *Polaric solar complex* was to have existed without space - and still contemporary clairvoyant cognitions claimed virus and unicellular precursors exactly for the *Polaric age*. - All the contradictions - remaining in this book - to what we can imagine in our days, cannot be resolved by us authors. We presume they will show as alterations between imaginations and factual plains. Let us take two examples from the soul : ambiguities. «I know the person I love stands up for me - and still I feel unsure.» Or : «I am hoping for a good grade - and yet I know I did well.»

In vol. I , part 1 , subsection «Thirdly» of chapter B.1. «Preliminaries» we found that spiritual visualizations, too, express themselves by the individual's soul, subjecting supersensible cognition to each person's personal development. Let us assume that Steiner's visualizations had developed - as may be seen already in his books and lectures - if he had lived long enough, then we might have a look at contemporary visualizations - in our days especially so because they develop so rapidly, and hopefully so do we. The present chapter relies on contemporary visualizations in Delor's books even more then the preceding chapter. Everything we know about primordial peoples and corresponding migrations, stems from Delor's books. So do all the depictions in the present chapter as they show primordial peoples' migrations. So do the eight Floods. We authors plead to consider contemporary visualizations, too.

The primordial peoples incarnate while sunrise occurs in front of different zodiac constellations. Up to including *Lemuris* the sunrise of autumn equinox [9/21] was taken, and from *Atlantis* on it was the sunrise of spring equinox [3/21]. The corresponding constellation is given in brackets.

In vol. I , part 1 , subsection «Thirdly» of chapter B.1. «Preliminaries» we had found, too, that clairvoyant visualizations cannot be proved. For proof we need to document sources as conscientiously as we can. For the sake of surveying, too, we are using the system of shortenings we know from the preceding chapter : For example (*D.6:138*) is to mean Delor's book no. 6 , pg 138 . Mentioning a source does not mean however that this information is due to clairvoyant visualizations only. - Purely anthroposophic notions or findings are spelled *in italics*. - In the present chapter, too, texts from the Wikipedias are not identified all the time.

In vol. I , part 2 , chapter D.4. «Dating Clues» the author D. Bosse had suggested not to take year dates as ascertained numbers but as consecutive points in the course of the Earth's development. May they be taken so here, too.

One or the other may ask himself - or herself - why quite a many things are mentioned here for times earlier than corresponding fossils. Here we take contemporary clairvoyant visualizations for base. Of course they must be verified again and again, but they need not be doubted beforehand. Before fossils could build up bodies consisted of soft parts only, decaying completely after death. Exactly this is why the *Lemurian age* does not begin with the earliest fossils but earlier still.

The Earth's conditions described here describe the layers of the Earth's interior at the same time. See in vol. I , part 2 , subsection «Esoteric Strata of the Earth's Interior», the esoteric part of chapter D.3. «Geological Layers Until Evidencing Fossils». In this subsection the Earth's layers are numbered from today's surface going more and more to the Earth's interior - corresponding to clairvoyant visualizations evolving. Here however all the *ages* mentioned below depict the Earth's development, beginning with the 9th layer, the innermost one, the Earth's states occurring at the Earth's surface of the corresponding time (*D.6:140*). So initially the Earth was smaller than today. During billions of years substances sedimented from space, enlarging her. Finally the uppermost layer, the mineral solid one, presses all the lower layers into the Earth's interior, condensing them (*D.6:139*).

I. Graphs, Diagrams, Spreadsheets, Cues

The areas on Earth showing the primordial peoples' migrations, are mentioned by names of today. Of course the geographic forms were different from today.

The colors used here are adopted to the emphases of this chapter :

Eons, Eras, Periods, Series ; Age ; Model year ; Geography, Geology, Climate ; Plants ; Animals ; Man in sciences ; Man in *spiritual science* ; Consciousness ; *spiritual beings* ; *Lemuris epochs* ; *Atlantis epochs* ; *Atlantic Floods* ; *Primordial peoples' migrations* ; *Creation day, Genesis topics*.

The *Polaric Age*'

All the Earth is a ball of warmth reaching as far as the later Saturn orbit (D.6:140). At her innermost core there is "the Earth's brain" or "Planet spirit", above "Shatterer", and above again "the Earth's mirror" (D.6:140) = the 9th up to the 7th layer of the Earth's interior (R.Steiner 94 – 97).

Time originating. Space does not originate yet.

Consciousness : deep trance consciousness as during *OLD SATURN* and minerals in our days (D.6:216).

3rd *Polaris epoch* : Virus precursors (D.8:166).

4th *Polaris epoch* : Archaeobacteria precursors (D.8:166).

5th - 7th *Polaris epoch* : Precursors of higher protozoans (D.8:166) :

5th *Polaris epoch* : Earliest coelenterates (D.8:164).

6th *Polaris epoch* : Sponge precursors (D.8:166).

7th *Polaris epoch* : Precursors of fungi, slime molds, and the root part of later plants (D.8:166). Earliest gastrulation = differentiation of outside {→ e.g. skin} and inside {→ e.g. gut} tissue (D.8:164 f).

End : *Saturn separation*.

The *Hyperborean Age*'

The Boreads up north, three sons of Boreas, god of storms, led a mystery site by name of Hyperborea (D.6:92). - According to Wikipedia.de the ancient etymology of the name "beyond the north" - Boreas was the god of the north wind - as scientifically unsure. A derivation from northern Greek βόρις = mountain, announcing a residence "beyond the mountains", seems imaginable.

Fire Earth and *Fruit Earth* originate together during all the *Hyperborean* (D.6:140) = the 6th and 5th layer of the Earth's interior.

Space originating.

Consciousness : dreamless deep sleep as during *OLD SONNE* and in plants in our days (D.6:216).

1st *Hyperborean epoch* : *Jupiter separation* (D.8:74). - Tunicates, sea squirts for example, separate from the other chordates.

2nd *Hyperborean epoch* : *Asteroid separation* (D.8:74).

up to the 4th *Hyperborean epoch* : coelenterates [for example freshwater polyps, jellyfish, sea anemones, coral animals] split into Protostomia {'mouths first' animals} [body orifice → primordial mouth ; anus is newly created] and Deuterostomia {'mouths second' animals} [body orifice → anus ; orifice is newly created].

3rd *Hyperborean epoch* : Worms and precursors of mollusks [snails, shells, and squids] separate from the other Protostomia (D.8:74).

4th *Hyperborean epoch* : *Mars separation* (D.8:74).

5th *Hyperborean epoch* : *Flowering plants originate from the Protostomia* = "blossom people" (D.6:208 , D.8:74) = "flowering animals" (D.8:111).

During the 5th *Hyperborean epoch*, too : Arthropods [insects, millipeds, crustacea [e.g. crabs, goose barnacles], arachnids [e.g. spiders, scorpions, mites]] split of from Deuterostomia (D.8:120 f).

7th *Hyperborean epoch* : Echinodermata {'hard skins'} [sea urchins, starfish, sea cucumbers] separate from the other Deuterostomia (D.7:362 , D.8:120).

Developments during the 7th *Hyperborean epoch* :

I.6. Ages in Keywords

Precambrian = super-eon «earlier than the Cambrian» [?4,540? – 538.8 million years ago] = *the Earth's primordial age* (D.7:170, 373, 447). Name unused because the following three eons were reclassified from being eras before.

- - - - = **1st creation day** = 7th = last *Hyperborean epoch* = until the *Sun separation* was completed = until before *Lemuris* (D.7:176, D.8:66 f) : «Let there be light : and there was light.»(KJV I:3). Human “I”'s incarnate as the earliest germs of the *sentient soul* (D.7:180, D.8:66).

HADAIC «eon similar to Hades» [?4,540 – 4,000? million years ago] : Earliest Moon rock was age dated ? 4.527? million years old [plus minus 10 million years] (D.7:12) : *It may however have originated within the Earth. As the Earth may have originated within the Sun* - Neither Bosse nor Delor state the HADAIC. For them it merges into the ARCHAIC.

ARCHAIC «primordial eon» [?4,540 – 2,500? million years ago] : Moon separation beginning (Bosse 2012:104)

PROTEROZOIC = eon of «early life» [?2,500? – 538.8 Million years ago] :

- **Paleo,-Proterozoic** [?2,500 – 1,600? million years ago] :

- - «Snowball Earth» : presumed paleoproterozoic glaciation = archaic Ice age = Huronic ice age , [?2,300 – 2,000? million years ago] (D.6:108).

- **Meso-Proterozoic** [?1,600 – 1,000? million years ago].

- **Neo-Proterozoic** [?1,000? – 538.8 million years ago] :

- - **Tonium** [?1000 – 720? million years ago]

End : Sun separation completed.

The Lemurian age'

According to Wikipedia Lemuria indicates a hypothetic or fictive sunken continent or a land bridge which ist o have been situated either between Madagascar and India, or between Australia and America.

The transitions between *Lemurian epochs* are wider than between those of *Atlantis* or *Post-Atlantis* (D.7:8).

Consciousness : dreamlike image consciousness as during *OLD MOON*, and in animals in our days (D.6:216).

1st half of Lemuris : dreamlike image consciousness rather alike to embryos (D.6:216).

Lemuris beginning : [?720? – 538.8 million years ago] = 1st *Lemurian epoch* :Cryogenian and Ediacaran = last two periods [of three] of the Neo-Proterozoic (D.7:8).

1st half of Lemuris : The Earth becomes watery (D.6:139 f). *Water Earth* = the 4th layer of the Earth's interior.

- - - **1st Lemuris epoch** : Sunrise on the autumn equinox (9/21) in Pisces (D.6:212 f).

- - **Cryogenian** [?720 – 635? million years ago] :

- - - - ~ **2nd creation day** until ~ the end of the Cambrian (D.7:176). Human “I”'s incarnate as the earliest germs of the *reasoning and mind soul* (D.7:180, D.8:66).

- - - «Snowball Earth» [?750 – 580? million years ago] : Earth totally iced over ? (D.7:7) / *hardened* (D.7:170) =

- - - - 1st *Lemurian* glaciation / *hardening* (D.7:170, 447) :

- - - - «Snowball Earth» : presumed Sturtian glaciation [?715 – 680? million years ago] (D.6:108).

- - - - «Snowball Earth» : presumed Marinoan glaciation [?660 – 635? million years ago] (D.6:108).

- - **Ediacaran** [?635? – 538.8 million years ago] : Cadomian orogeny [until the Cambrian, at the northern rim of Gondwana]. - **Food whirlers** : no jaws (D.7:7).

PHANEROZOIC = Eon of «visible life» [538.8 million years ago up to our days].

Paleozoic = era of «ancient life» [538.8 – 251.9 million years ago] In 1919 however Steiner added all the Paleozoic to the *Hyperborean age* (R.Steiner 300 a : 107).

Early Lemuris : {538.8 – ~ 280 million years ago} :

- - - **2nd Lemurian epoch** : Cambrian and Ordovician (D.7:8). Sunrise on the autumn equinox (9/21) in Aquarius (D.6:213, D.7:8, 339).

- **Cambrian** [538.8 – 485.4 million years ago] : The Sun releases Venus (D.7:358).

- **Ordovician** [485.4 – 443.4 million years ago] : Caledonian orogeny [until the Silurian] : Appalachia – Scotland – Norway (D.7:6, 35 f, 339). The Sun releases Mercury (D.7:358). - **Nautilus similars** (D.7:6, 339).

- - - - ~ **3rd creation day** : Ordovician until ~ middle Devonian (D.7:176, 311). Human “I”'s incarnate as earliest germs of the *consciousness soul* (D.7:180, 326, D.8:66).

I. Graphs, Diagrams, Spreadsheets, Cues

- - - - 2nd Lemurian glaciation / hardening (D.7:170).
- - - 3rd Lemurian epoch : Silurian until the first half of the Devonian (D.7:311, D.7:8). Sunrise on the autumn equinox (9/21) in Capricorn (D.6:213). - Lung breathing begins ; skin, gill, and lung breathing exist parallelly (D.6:213, D.7:8).
- Silurian [443.4 – 419.2 million years ago] : 1st step of the air-water separation : earliest wobbly ground begins settling {from the life sphere = fog sphere} (D.7:112). - Sea scorpions, jawless fish, Placodermi = slab skinned, earliest genuine fish (D.7:6). - Earliest insects. - Earliest vascular plants : ~ 430 million years ago.
- Devonian [419.2 – 358.9 million years ago] : 2nd step (D.7:112) of the air-water separation (D.6:314, 440) : middle Devonian (D.7:110) : (quite wobbly) ground originating (D.7:262). Rainfall from the fog atmosphere into the flat seas {not however staying in the ocean basins since they are still blazing hot} (D.6:155, D.7:163). - Amphibia (D.7:112). Heyday of fish (D.7:262).
- - - - Variscan orogeny [until the Triassic] = Collision Africa / Europe (D.7:35 f) : South Asia / North Asia ; South continent Gondwana / north continent Laurasia (D.7:278). - Uralian orogeny beginning (D.7:5).
- - - 4th Lemurian epoch : 2nd half of the Devonian until the 1st half of the Permian (D.7:8, 163). Sunrise on the autumn equinox (9/21) in Sagittarius (D.6:213, D.7:8).
- - - - ~ 4th creation day : ~ 2nd half of the Devonian until ~ 1st half of the Carboniferous (D.7:176). Human “I”s incarnate as astral bodies (D.7:180, D.8:66).
- Carboniferous «carbon making» [358.9 – 298.9 million years ago] : Transition from amphibia to reptiles (D.6:421). Giant dragonflies (D.7:199). - Stone coal woods of ferns, horsetails, and lycopods (D.7:199).
- - - - 3rd Lemurian = permo-carbonic glaciation / hardening until Permian (D.7:170 f).
- - Middle Carboniferous : 3rd step of air-water separation (D.7:112). - Jehovah (D.6:442) blows into {man’s} nostrils the breath of life [KJV 2:7] (D.6:440 f, D.8:66) : ~ from middle Carboniferous until the end of the 2nd Atlantic epoch [~ 37 million years ago] (D.5b:172) : Breath is blown into man lacking an “I” so far, as everything man had accumulated during all the creation days so far had existed spiritually only so far. As breath is blown into man once 12 times, 12 primordial peoples originate
- - - - ~ 5th creation day : ~ 2nd half of the Carboniferous until the 1st half of the Permian (D.7:172, 176, 182). Human “I”s incarnate as ether bodies (D.7:180, D.8:66). „As the first three primordial peoples however incarnated before the Moon separation already with few individuals each time, we need to claim that for them the 5th creation day was earlier ; we have been emphasizing quite often that creation days are not times but processes we can just roughly press into certain ages.” (D.7:181).
- - - - - 1st primordial people (Libra (D.7:236)) incarnate (D.7:112) in West Siberia as Cushite precursors (D.7:237, 240). Endowed with an “I”. Dying out, too, in West-Siberia unless they are Sun humans, see below (D.7:237).
- - Transition Carboniferous - Permian :
- - - - - 2nd primordial people (Scorpion) incarnate in North America as Ainu precursors (D.7:240) : just 3 % of them incarnate, the rest is transposed to Neptune or Uranus (D.7:225). The survivors migrate to Palestine = Paradise (D.7:225).
- 2nd half of Lemuris, dreamlike image consciousness similar to a newborn today, and developing in babies up to 1 ¾ years old (D.6:216) {as in vertebrates today except for primates}.
- Middle Lemuris = Permian : [~ 298.9 – 251.9 million years ago] ; [~ 260 million years ago] (D.6:139) :
- - early Permian : [303 – 260 million years ago] (D.7:5, 9) : Pangea completely assembled by drift (D.6:10). - Therapsida [= mammal-like reptiles] (D.7:5). Saurians (D.6:202). - Focus of the 5th creation day (D.6:420).
- - - - - Sun humans = pre-humans of the Sun oracle in Paradise = Palestine (D.5b:275) : Very few of the 1st, 2nd, and 3rd primordial peoples = the posteriors of those who could remain incarnated during the Moon separation (D.6:320 : in spite of the hardening Moon forces), since then incarnating in the line of Sun humans exclusively (D 6:91).
- - - - - 3rd primordial people (Sagittarius) incarnate in the area of Japan as Hun precursors (D.7:221, 240), → Palestine / Paradise merging into the Sun humans there (D.7:221 f).
- - - - Karoo ice age = Permo-carbonic ice age [360 – 260 million years ago].
- - - - Uralic orogeny = Collision Europe – Siberia ; Pangea completed (D.7:5, II, 35 f).
- - Middle Permian : 4th step of air-water separation (D.7:112) = Moon separation completed (Bosse

I.6. Ages in Keywords

- 2012:104 , D.6:138 , 199 , 213 , D.7:12) : corresponding to human birth (D.6:423). - **Lemurian** = **Luciferic fall from grace** = **original sin** = **fall of mankind** (D.7:5 , 9). → volcanic fire storms at the end of *Lemuris* (D.6:68). The Earth's axis moves until the beginning of the Jurassic (D.6:462). - Man straightens up until the middle of the Jurassic (D.6:463 , D.7:9). - **Warm-blooded** : birds, early mammals (D.6:202). The most extensive mass extinction Fig. D.5.5.
- - - - - 5th primordial type : Marama precursors split off various swimming saurians, big sauropods, flying saurians, and sea turtles still earlier in: *Lemuris* (D.6:435).
- The ground becomes damp after the **Moon separation** ; = 3rd layer of the Earth's interior (D.6:139 f).
- - - **5th Lemurian epoch** : 2nd half of the Permian until the Triassic ? (D.7:8). Sunrise on the autumn equinox (9/21) in Scorpion (D.6:213 , 422). - **The 6th creation day beginning** (D.6:422).
 - - - - ~ **6th creation day** : from Moon separation on (D.7:176 , 186) : Human Is begin incarnating as **physical bodies** : first in warmth only, and in air, too, presumably at the transition from the 6th to the 7th creation day (D.7:180 , D.8:66).
 - - **Late Permian** : **Earliest cracks in Pangea** (D.6:10 , D.7:11). - **Sex differentiation initiated** (D.6:213 , D.7:8). - **Warm-blooded saurians** (D.6:201). **Most extensive mass extinction** (D.6:37).
 - - - - - 1st primordial people : just "I"-less Cushite precursors in **West Siberia** (D.7:237). **Mixing in south east Asia** with the 3rd primordial people (D.7:238).
 - - - - - 2nd primordial people : in **Greenland** just "I"-less Ainu precursors (D.7:225).
 - - - - - 3rd primordial people : Hun precursors → **south east Asia** (D.7:221 f).
 - - - - - 4th primordial people (Capricorn) : incarnating as Papua precursors in **North America** (D.7:240).
- Late Lemuris** = Mesozoic = era of «intermediate life» [251.9 – 66 million years ago] = „*Sekuncärzeit*“ (R.Steiner 300a:69):
- **Triassic** [251.9 – 201.3 million years ago] : **Earliest mammal fossils** (D.6:200). - **Luciferic fall from grace** = **original sin** = **fall of mankind** (D.6:377 ff) occurring however anew for every primordial people (D.6:379). - **Focus of the 6th creation day** (D.6:420).
 - - - - - Sun humans in **Paradise** = **Palestine** (D.5b: 275).
 - - - - - 3rd primordial people : Hun "I"s reincarnate in **Australia** (D.7:222).
 - - **Triassic beginning** :
 - - - - - 1th primordial people: in **south east Asia** together with the 3rd primordial people ; reincarnating for the first time as Cushite "I"s (D.7:238).
 - - - - - 2nd primordial people: the earliest new Ainu "I"s reincarnating in **Greenland** (D.7:225).
 - - - - - **5th primordial people** (Aquarius) = **Negroids / Bantu**, coming from Uranus (D.5a:98), incarnate in **Persia** (D.5a:92 , D.6:437 , D.7:240), having the breath of life blown into them (D.6:435), → **South Africa** → **Kenya** → **Ethiopia** → **Sudan** 300 - 133 thousand years ago (D.5a:54 f), migrating from **Australia** → **Africa** > 126 thousand years ago, → **Atlantis** > 123 thousand years ago, → **southern Europe** 105 thousand years ago, → **Israel** 98 thousand years ago, → **Egypt** 89 thousand years ago, → **Ethiopia** 84 thousand years ago (D.5a:55). → Marama (D.5a:98) / Mongols =/= 9th primordial people.
 - - **Middle Triassic** :
 - - - - - **6th primordial people** (Pisces) = Native Americans : a primordial ethnicon, i.e. existing "I"less in the Polaric and Hyperborean ages already (D.6:427) ; their souls, coming from Venus (D.5a:98 , D.6:427), incarnate in **Palestine** (D.5a:92 , D.6:427 f) / **Israel** (D.7:240) → **Firbolg** (D.5a:98) / **Satyrn** / **Zappa** → **Homo erectus** (D.5a:63).
 - - **End of the Triassic** : **Lemurian highlight** (D.6:15). - **The tree of knowledge of good and evil** [KJV 2:9] (D.6:401).
 - - **Transition Triassic-Jurassic** : **Pangea breaks up** (= **expulsion from Paradise** (D.7:38)) → **Laurasia** = northern half, and **Gondwana** = southern half separate until the end of the Cretaceous (D.6:10). **Atlantis** : central *Atlantic* part originating (D.6:373). - **Cain is born as a Marama precursor** {5th primordial people} in Asia Minor, **Abel in Paradise** = **Palestine** as a Hun precursor {3th primordial people} (D.6: 356). - **Cain & Abel** : After migrations partly spent together, and separated in part, during a number of incarnations, **Cain slaughters Abel in south east Asia** (D.6:324 , 357 . 419 f).
 - - - - - 3rd primordial people : Hun precursors in **Australia** (D.7:222).
 - - - - - **7th primordial people** (Aries) = **Firbolg / Satyrn / Zappa**, coming from Mars (D.5a:98), incarnate as Cro-Magnon precursors in **China** (D.5a:92 , D.7:240) → **Cro-Magnon** (D.5a:98) = **Homo sapiens** 1.8

I. Graphs, Diagrams, Spreadsheets, Cues

- 1.6 million years ago (D.5a:61) → **Persia** 340 – 325 thousand years ago, **southern Europe**, **North Africa** 300 – 125 thousand years ago (D.5a:56).
- **Jurassic** [201.3 – 145 million years ago] : Earliest sea animals building up calcified shells : seashells, Foraminifera [= unicellular animals with a cell nucleus and calcified shells] (D.6:156).
- - - **6th Lemurian epoch** : Jurassic (D.7:8). Sunrise on the autumn equinox (9/21) in **Libra** (D.6:213). **Equilibrium** between the forces of the Sun and the Moon, separated both (D.7:9). - Earliest anlagen of eyes (D.6:399).
- - - - - 1st primordial people (just very few) : merging totally into the 3rd primordial people in **Australia** (D.7:238).
- - - - - 2nd primordial people : Ainu precursors in **Europe** (D.7:226).
- - - - - 3rd primordial people : Hun precursors in **Australia** (D.7:222).
- - **Jurassic beginning** : The Earth's axis moved since the Moon separation (D.6:462). - **Human sex differentiation** (D.6:267 ff, 377, 421, 424).
- - - **Alpidic** = Alp-like orogeny [up to today].
- - - - - *Sun humans* in **Lemuria** (D.5b: 275), just the cainite core moves → high up north : “**Land Nod**” (D.6:91).
- - **Middle Jurassic** : **Gondwana** splitting into **South America / Afrika**, and **Madagascar / India / Australia / Antarctic** (D.6:10) until well into the Cretaceous (D.6:12). - **Human straightening up completed** (D.6:319, 422) ; corresponding to a one-year-old of today (D.6:422). **Human sex differentiation completed** (D.6:464).
- - - - - 2nd primordial people : Ainu precursors in **Europe**, about 1/3 being decimated in the **Lemurian** fire catastrophe (D.5b:200, D.6:87, D.7:226).
- - - - - 3rd primordial people : Hun and Cushite precursors in **Indian**, decimated by the end-Lemurian fire catastrophe, too (D.5b:200, 262).
- - - - - 5th primordial people : Marama precursors in the area of **Persia** (D.6:437).
- - - - - 6th primordial people : Firbolg precursors in **Palestine** (D.6:428).
- - - - - 7th primordial people : Cro-Magnon precursors in **central Asia** (D.6:339).
- - - - - 8th primordial people (Taurus) : Negroid / Bantu precursors (D.6:332) : = Cro-Magnon, coming from **Vulcan** (D.5a:98), incarnate in **Central America** (D.5a:92, D.6:332, D.7:240) → **Bantus** (D.5a:98).
- - **End of the Jurassic** : Eve incarnates in **Thule** {northern Atlantic} (D.6:359). - **The Christ's First pre-Christian sacrifice / gift** (D.6:470) endows man with sensory organs (R.Steiner 148:194).
- - **Transition Jurassic-Cretaceous** : **Atlantis** : southern Atlantic part originating (D.6:373), in there rectangular layout lines (“house ground plan”) blazing hot 5,300 m deep when the Atlantic did not yet contain water (D.6:375).
- - - - - 9th primordial people (Gemini) = **Marama / Mongols**, coming from **Mars** (D.5a:98), incarnate as **Negrito** precursors on the **Arabic peninsula** (D.5a:92, D.7:240) → ~ 400 – 320 thousand years ago in **central Asia / India**, are destroyed there completely in the end-Lemurian fire catastrophe (D.5b:311). A different part survives, migrates ~ 115 thousand years ago → **South Africa** (D.5b:311), → **Tristan da Cunha** 112 thousand years ago, → **Atlantis** 109 thousand years ago (D.5a:54 ff) → **Negritos** (D.5a:98, D.6:259 ff).
- **Cretaceous** [145 – 66 million years ago] : From the protein atmosphere / life sphere the protein part drops out becoming today's mineral oil (D.6:162). During the last third {~ 92 – 66 million years ago} earliest water puddles on the ocean floor (D.6:155). **Seals split off** during the middle of the Cretaceous (D.6:435).
- - - **7th Lemurian epoch** : Cretaceous (D.7:8). Sunrise on the autumn equinox (9/21) in **Virgo** (D.6:213) (Pisces on spring equinox (D.6:209)). - **End of Lemuris** : fire catastrophe (D.5a:207) = **fire storm** (D.6:6) = **end-Lemurian Flood** (D.6:18), corresponding to the expulsion from **Paradise**.
- - - - - 1st primordial people : Cushite precursors mix with the 3rd primordial people = Hun precursors in **India** until the beginning of the Cretaceous, merging in them (D.7:238). These mongrels live on **Lemuria** at the time of the fire catastrophe, dying out as much as completely in the fire catastrophe except for a «homeopathic ferment». They are cared for by **Methuselah** who was not incarnated then (D.6:86 ff).
- - - - - 2nd primordial people : in **Europe** (D.7:226).
- - - - - 3rd primordial people : Hun precursors : on **Lemuria**, badly decimated there by the end-Lemurian fire catastrophe (D.7:222). **Methusael / Lemminkainen**, incarnated among them at the time, teaches them the (morning) dew lettering (D.3:281 f, 409 f, D.6:163 ff). He leads the survivors → **Kaza-**

I.6. Ages in Keywords

- khstan** (D.6:87, D.7:222).
- - - - - 4th primordial people: Papua precursors from **Asia** → **Lemuria**, badly decimated there by the end-*Lemurian* fire catastrophe; Väinämöinen, not incarnated then, leads the survivors → **Kazakhstan** (D.6:87).
 - - - - - 5th primordial people: Marama- / Mongol precursors: in **India**, decimated there by half by the end-*Lemurian* fire catastrophe (D.6:437); Noah, not incarnated then, leads the survivors → **Kazakhstan** (D.6:87).
 - - - - - 6th primordial people: Firbolg precursors in **India** (D.6:428), very little decimated there by the end-*Lemurian* fire catastrophe (D.6:429). During the middle of the Cretaceous a part of the Firbolg precursors migrates → **Australia**; in there the Aborigine {= 12th primordial people} precursors incarnate at the end of the Jered-era {Rmoahals II, 50 – 37 million years ago} under Abel (D.6:428).
 - - - - - 7th primordial people: Cro-Magnon precursors in **central Asia**, badly decimated there by the end-*Lemurian* fire catastrophe; Methusalem, not incarnated then, leads the survivors from **central Asia** directly, i.e. not via *Lemuria*, → **Kazakhstan** (D.6:87).
 - - - - - 8th primordial people: Bantu precursors from *Atlantis* → **Africa** → **Arabia** → **India**, decimated there by the end-*Lemurian* fire catastrophe (D.6:87, 332).
 - - - - - The primordial peoples 2 to 8 gather in **Kazakhstan**, most of them coming from *Lemuris*, just the primordial peoples 2 and 7 coming from the north (D.6:88).
 - - - - - 9th primordial people: Negrito precursors on *Atlantis* (totally dying out on there) and in **Africa** (surviving) (D.6:87); the only primordial people staying away from Kazakhstan.
 - - **End of the Cretaceous: India and Australia-Antarctic** separate (D.6:11). **Last mass extinction** (D.6:37) by “evil appetites in the human soul” (R.Steiner 109:237) / after a meteorite impact into Yucatan + somewhat later end-*Lemurian* fire catastrophe (D.5a:207) = fire storm (D.6:6) = Flood (D.6:18, 28).
 - - - - - 10th primordial people (Cancer) = Huns, coming from Jupiter and Venus (D.5a:98), incarnate in **North America** (D.5a:92) → precursors of Native Americans (D.5a:98, D.7:240). From **North America** → **Asia** → **Lemuria**, badly decimated there by the end-*Lemurian* fire catastrophe, the survivors → **Kazakhstan** (D.6:88).
 - - **Transition end of the Cretaceous / beginning of the Tertiary [= Old Tertiary beginning = Paleogene beginning = Paleocene]:** The *Lemurian* protein atmosphere is totally purified from protein (D.3:410).
 - - - - - Sun humans migrate from **Lemuria** → **Kazakhstan** during the end-*Lemurian* fire catastrophe (D.5b:275, D.6:91).
 - - - - - 2nd primordial people: Ainu precursors: The survivors / chosen people of the end-*Lemurian* fire catastrophe are led at the transition to the *Atlantic age* from **Europe** directly, i.e. not via *Lemuria*, → **Kazakhstan** by Cain / Ilmarinen who was incarnated among them then (D.6:87).
 - - - - - 8th primordial people: Pachacamac, not incarnated then, leads the survivors / chosen people from **India** → **Kazakhstan** (D.6:87, 332).

The Atlantic Age'

Cenozoic = era of «recent life» [66 million years ago up to today].

The ground is soft / liquid at the beginning *Atlantis* (D.6:139) = 2nd layer of the Earth's interior. - The Life sphere does not contain protein any more, consisting of fog only (D.3:410).

The Christ's Second pre-Christian sacrifice / gift - at the beginning of *Atlantis* - endows man with organs to live by (R.Steiner 148:194) and heals the life body (ether body) from self-indulgent passions (D.6:76, 81, 84). Speaking originates by Jubal from singing (D.5b:286, 290).

All the *Atlantic age* dream-like image consciousness declines gradually yet persisting in a extenuated way (D.6:216). Waking day-consciousness and a group I unfold gradually the same as with today's primates.

Dead animals are introduced into human food (D.6:367).

- [Old Tertiary =] Paleogene «old parentage» [66 – 23.03 million years ago]:

- - Paleocene «old unusual» [66 – 56 million years ago]:

- - - **Rmoahals epoch** (~ 65 – 26 million years ago) (I) = 1st *Atlantic epoch* (65 – 50 million years ago):

I. Graphs, Diagrams, Spreadsheets, Cues

Sunrise on the spring equinox (3/21) in Aquarius (D.5b:146, D.6:209). = Enoch / Kenan era, maximum effects ~ 50 million years ago : Consciousness and intellectual power correspond to a two-years-old of today (D.6:422). Lemurian memory {situational, not reflecting} declining.

- - - - - 2nd primordial people : Ainu precursors in **Kazakhstan** (D.5b:200, D.7:226) → **China**, arriving there during the Lamech era = Toltec epoch (D.5b:56, 259).
- - - - - 3rd primordial people : Hun and Cushite precursors : beginning anew in **Kazakhstan** (D.5b:200) → **Atlantis** (D.5b:210, 259, D.7:222).
- - - - - 4th primordial people : Papua precursors in **Kazakhstan** (D.5b:91) → **Atlantis** (D.5b:210, 259).
- - - - - 5th primordial people : Marama precursors are the last primordial people to proceed from jill breathing to lung breathing : at first similar to tadpoles (sea cows splitting off from them (D.6:434 f)) ; → **South America** (D.5b:46, 74) ; → living in **Kazakhstan** (D.6:437) in air bubble houses in the fog (D.5b:134) → a small part to **Atlantis** (D.5b:210, 259).
- - - - - 6th primordial people : Firbolg- / Satyr- / Zappa precursors in **India** → Enos, then incarnated with them there, leads the survivors → **Kazakhstan** (D.5b:151, D.6:87, 429).
- - - - - 7th primordial people : Cro-Magnon precursors migrate from **Kazakhstan** (D.6:339) → **Atlantis** (D.5b:171, 210, 260).
- - - - - 8th primordial people : Bantu precursors migrate from **Kazakhstan** (D.6:332) → **Atlantis** (D.5b:47, 171, 210, 260).
- - - - - 9th primordial people : Negrito precursors in **Africa** (D.5b:47, 171, 210, 260, 311).
- - - - - 10th primordial people : precursor of Native Americans migrate from **Kazakhstan** → **Europe** (D.5b:161, 210, 260).
- - Transition Paleocene-Eocene: **Greenland and Europe separate**, the North Atlantic originates (D.6:11).



Fig. I.6.1. Distribution of peoples during the Eocene (D.5b:177).

- - Eocene «as unusual as dawning» [56 – 33.9 million years ago] :
- - - Eocene beginning [~ 50 million years ago] : **Australia and Antarctic separate** (D.6:11). End of **Pangea** decaying (D.6:11). **Atlantis** : northern part originating as Greenland and Europe are torn apart (D.6:373).
- - - - - 11th primordial people (Leo) : Bushman and Khoi/San precursors, coming from Mercury (D.5a:98), incarnate in **New Guinea** (North Sahulland) (D.5b:193, 195, D.7:240).
- - - **Rmoahals epoch** (~ 65 – 26 million years ago) (II) : 2nd **Atlantic epoch** (50 – 37 million years ago) (D.5b:172) : **Jered era**, maximum effect ~ 41 million years ago : Sunrise on the spring equinox (3/21) in Capricorn (D.6:209). - **Old world monkeys and new world monkeys separate** 46 million years ago.
- - - - - Sun humans : “long skulls” = led by Abel (D.6:92) : migrate from **Kazakhstan** → **Atlantis** (D.5b: 275) to the Sun oracle = “city of golden gates” (D.6:92).
- - - - - Sun humans : “swan initiates = albinos = led by Cain (D.6:92) : migrate from **Kazakhstan** → **Thule = Europe / Greenland** (D.6:92).
- - - - - 2nd primordial people : Ainu precursors migrate from **Kazakhstan** → **China** (D.5b:56) → **Atlantis** (D.5b:210) → **South America** (D.5b:200, D.7:226).
- - - - - 3rd primordial people : Hun and Cushite precursors migrate from **Kazakhstan** → **Atlantis** → **South America** (D.5b:200), together with Ainu precursors (D.7:222).
- - - - - 4th primordial people : Papua precursors on **Atlantis** (D.5b:91, 171).

I.6. Ages in Keywords

- - - - - 5th primordial people : Marama precursors similar to tadpoles, finally lung breathers (D.6:437).
Marama precursors in **Africa** (D.5b:46 , 74 , 92).
- - - - - 6th primordial people : Firbolg- / Satyr- / Zappa precursors migrate from **Kazakhstan** → **Europe** (D.5b:151 , 161 , 210 , D.6:429).
- - - - - 7th primordial people : Cro-Magnon precursors on **Atlantis** (D.5b:171 , D.6:333).
- - - - - 8th primordial people : Bantu precursors on **Atlantis** (D.5b:47 , 171 , D.6:332).
- - - - - 9th primordial people : Negrito precursors migrate from **Africa** → **South America** with Ainu and Hun precursors together (D.5b:311).
- - - - - 10th primordial people : Precursors of Native Americans migrate from **Kazakhstan** → **Europe** (D.5b:161 , 210).
- - - **End of the Eocene** [up to > 33.9 million years ago] :
- - - - - 12th primordial people (Virgo ?) : Ainu (D.5a:77), coming from Saturn (D.5a:98 , D.5b:182), incarnate in **Australia** (D.5a:92 , D.5b:182 , D.7:240) → **Aborigines precursors** (D.5b:21) / into the bodies of the 6th primordial people = Firbolk precursors (D.5b:180) {**Incongruity** ?}.
- - - - - 2nd primordial people : Ainu precursors migrate from Kazackstan → China (D.5b:56).



Fig. I.6.2. Distribution of peoples in the Oligocene (D.5b:146).

- - **Oligocene «little is unusual»** [33.9 – 23.03 million years ago] :
- - **Oligocene beginning** : Iceland is born (D.6:373).
- - - **Rmoahals epoch** (~ 65 – 26 million years ago) (**III**) : **3rd Atlantic epoch** (37 – 26 million years ago) (D.5b:147) : **Mahalalel era** (Kenan's son) , maximum effect ~ 31 million years ago (D.5b:147). - **Sunrise on the spring equinox (3/21) in Sagittarius** (D.6:209).
- - - - - 2nd primordial people : Ainu precursors migrate from Kazackstan → China (D 5b:56). Ainu precursors in **South America** (D.5b:161 , 200f , D.7:226).
- - - - - 3rd primordial people : Hun and Cushite precursors migrate from **South America** back to **Atlantis** (D.5b:146 , 161 , 171 , 200f , D.7:222).
- - - - - 4th primordial people : Papua precursors on **Atlantis** (D.5b:47 , 91 , 146 , 161).
- - - - - 5th primordial people : Marama precursors in **Africa** (D.5b:92 , 161 , D.6:437).
- - - - - 6th primordial people : Firbolg- / Satyr- / Zappa precursors in **Greenland** (D.5b:46 , 151 , 161 , D.6:429).
- - - - - 7th primordial people : Cro-Magnon precursors on **Atlantis** (D.5b:146 , 161 , D.6:333).
- - - - - 8th primordial people : Bantu precursors migrate from **Atlantis** to **Central America** (D.5b:47 , 146 , 161).
- - - - - 9th primordial people : Negrito precursors in **South America** (D.5b:47 , 161 , 311).
- - - - - 10th primordial people : Huns migrate to **Atlantis** (D.5b:80 , 110). - Precursors of Nativ Americans in **North America** (D.5b:127 , 161).
- - - - - 11th primordial people : Khoi/San precursors in “**New Guinea**” (Sahulland) (D.5b:88 , 195).
- - - - - 12th primordial people : Aborigines precursors in **Australia** (D.5b:48 , 182).
- **[New Tertiary] Neogene «new parentage»** [23.03 – 2.588 million years ago] :
- - **Miocene «less unusual»** [23.03 – 5.333 million years ago] :

I. Graphs, Diagrams, Spreadsheets, Cues



Fig. I.6.3. Distribution of peoples in the early Miocene (D.5b:135).

- - - **Travatlis (I) epoch** (~ 26 – 14 Million years ago) , **4th Atlantic epoch : Abelitic Henoch era**, maximum effect ~ 24 – 20 million years ago. Sunrise on the spring equinox (3/21) in Scorpion (D.6:209). - [According to fossils human-like old world monkeys [= **Hominoids**] split into Gibbons [= small apes] and [great] apes [= **Hominids**] 20 million years ago].

- - - **Middle of Atlantis** : Ahrimanic fall from grace = fall of mankind (D.6:379).

- - - - - 2nd primordial people : Ainu precursors migrate from **Kazackstan** → **China** (D.5b:56). Ainu precursors in **Africa** (D.7:226).

- - - - - 3rd primordial people : Hun precursors in **Northern Atlantis / Thule / Hyperborean area** (D.5b:79 f) and → **Rockall** (D.5b:80 , D.7:222), splitting off soft-bodied Sahelanthropus tchadensis there (D.5b:123).

- - - - - 4th primordial people : Papua precursors in **Africa** (D.5b:46 , 91).

- - - - - 5th primordial people : Marama precursors in **South America** (D.5b:46 , 92 , D.6:437), part of them staying in **Africa** however (D.5b:92).

- - - - - 6th primordial people : Firbolg precursors in **Northern Atlantis / Thule / Hyperborean area** (D.5b:80), Firbolg- / Satyr- / Zappa precursors migrate from **Greenland** → **Europe** during the last third {~ 18 – 14 million years ago} (D.5b:46 , 151 , D.6:429).

- - - - - 7th primordial people : Cro-Magnon precursors on **Atlantis**, the mayor part migrate → **North America**, the rest remaining on **Atlantis** = Travatlis merging into other peoples (D.5b:107 , D.6:333).

- - - - - 8th primordial people : Bantu precursors in **Central America** (D.5b:47 , 89).

- - - - - 9th primordial people : Negrito precursors in **South America** (D.5b:47 , 92 , 311).

- - - - - 10th primordial people : Huns on **Rockall** (part of **Thule**) (D.5b:110). - Precursors of Native Americans in **North America** (D.5b:47).

- - - - - 11th primordial people : Khoi/San precursors migrate from “**New Guinea**” (Sahulland) → **Newsealand-Plateau** → **Manihiki-Plateau (Pazific)** (D.5b:195).

- - - - - 12th primordial people : Aborigines precursors migrate from **Australia** → **south east Asia** → **cenral Asia** → **Altai area** (D.5b:48 , 90 , 182).



Fig. I.6.4. Distribution of peoples in middle Miocene (D.5b:115).

- - - **Travatlis (II) epoch** (~ 14 – 7 million years ago) = **5th Atlantic epoch : Methuselah era**, maximum effect ~ 10 million years ago. Sunrise on the spring equinox (3/21) in Libra (D.6:209).

- - - - - 2nd primordial people : Ainu precursors migrate from Kazackstan → China (D.5b:56).

- - - - - 3rd primordial people : Hun precursors on **Rockall** (D.5b:80 , D.7:222), splitting off Sahelanthropus-tchadensis precursors (D.5b:123 , D.7:222), and soft-bodied **chimpanzees** (D.5b:125) {where ?}.

- - - - - 4th primordial people : Papua precursors in **Africa** (D.5b:46 , 91).

I.6. Ages in Keywords

- - - - - 5th primordial people : Marama precursors in **Central America** (*D.5b:46, 74, 92, D.6:437*), are the last primordial people developing from *Lemurian* sea life to land life (*D.5b:134, D.6:435*), splitting off *Ardipithecus ramidus* on **Bahama** (*D.5b:119 f*), as well as **orangutans and gorillas** (*D.5b:125*) {where ?}, soft-bodied all of them.
- - - - - 6th primordial people : Firbolg precursors in **Europe** (*D.5b:46, D.6:429*) splitting off soft-bodied **gibbons** (*D.5b:125*).
- - - - - 7th primordial people : Cro-Magnon precursors in **North America** (and on *Atlantis*) (*D.6:339*) splitting off soft-bodied *Orrorin tugenensis* in **Africa** (*D.5b:121*).
- - - - - 8th primordial people : Bantu precursors in **North America** (*D.5b:47, 89, D.6:332*).
- - - - - 9th primordial people : Negrito precursors on **Tristan da Cunha** (*D.5b:47, 311*).
- - - - - 10th primordial people : Huns in **northern Atlantis / Thule / Hyperborean area** (*D.5b:79*), ~ on **Rockall** (*D.5b:80*). - Precursors of Native Americans migrate from **North America** to **South America** (*D.5b:47, 116, 127*).
- - - - - 11th primordial people : Khoi/San precursors migrate to the **Pacific** (*D.5b:48, 88, 195*).
- - - - - 12th primordial people : Aborigines precursors in **central Asia** (*D.5b:48, 90, 182 f*).
- - - - - Great apes :
- - - - - Earliest pre-humans (species souls of animals, no “I” humans) : *Orrorin tugenensis* (*D.5b:119 ff*). - *Sahelanthropus tchadensis* (*D.5b:119 ff*), migrates from **Rockall** → **European Russia** → **Levante** → **Tchad**, extinct there (*D.5b:123*). - *Ardipithecus ramidus* [fossils 4.4 million years ago], migrates from **Bahama** → **Atlantis** → **Cape Verde** → **Africa** (*D.5b:119 f*).



Fig. I.6.5. “Run for Atlantis” in the late Miocene (*D.5b:47*).

- - - - - **Toltec epoch** (7 – 3 million years ago) = **6th Atlantic epoch** : (*D.5b:65*) : **Abelitic Lamech era**, maximum effect ~ 4 million years ago. - Sunrise on the spring equinox (3/21) in **Virgo** (*D.6:209*). - **All the peoples going for Atlantis** :
- - - - - 2nd primordial people : Papuas aus **northern Europe** (*D.5b:47*). Ainu precursors arrive in **China** (*D.5b:56*).
- - - - - 3rd primordial people : Negritos from **Tristan da Cunha** (*D.5b:47*). - Hun precursors migrate from **Rockall** → **Island** → **western Europe** → **nord west Africa** → back again to **South America** (*D.5b:49, 80, D.7:222*).
- - - - - 4th primordial people : Khoi/San from **South America** (*D.5b:47*) → **Atlantis** (*D.5b:48*). - Papua precursors from **Manihiki-Plateau (Tahiti)** → ? (*D.5b:80*). Papua precursors in **Europe** (*D.5b:46, 80, 90 f*), splitting off soft-bodied *Homo antecessor*, *Homo rudolfensis*, and *Homo habilis* (*D.5b:90 ff*) there.
- - - - - 5th primordial people : Negroids from **North America** (*D.5b:47*). - Marama precursors in **Central America** (*D.5b:46, 74, 92, D.6:437*), there African Marama precursors split off *Kenyanthropus* who dies out still in the Lamech era (*D.5b:92*), and *Paranthropina* [Australopithecina] {where ?} who split later into *Paranthropus* [Australopithecus] *sediba* (fossils in **South Africa** 2.0 million years old = Danube ice age) and *Paranthropus* [Australopithecus] *bahrelghazali* (fossils in **Tchad** 3.5 – 3.0 million years old = Lamech era) (*D.5b:93 f*).
- - - - - 6th primordial people : Native Americans from **South America** (*D.5b:47*). - Firbolg precursors on **Atlantis** (*D.5b:46, D.6:429*), splitting off *Paranthropina* [Australopithecina] {where ?} who split later into *Paranthropus* [Australopithecus] *robustus* (fossils in Tansania and South Africa 2.0 – 1.5 million years old = Danube ice age until **Waal** warm interval) and *Paranthropus* [Australopithecus]

I. Graphs, Diagrams, Spreadsheets, Cues

- aethiopicus (fossils in East Africa 2.8 – 2.3 million years old = Biber ice age) (D.5b:93).
- - - - - 7th primordial people : Firbolg **from southern Europe** (D.5b:47). - Cro-Magnon precursors in **North America** (D.5b:49, D.6:339), splitting off Paranthropus [Australopithecus] boisei {where ?} (fossils in **East Africa** 2.3 – 1.4 million years old = Tegelen warm interval until Günz ice age) (D.5b:93).
- - - - - 8th primordial people : Bantu precursors on **Atlantis** (D.5b:46, 89, D.6:332), splitting off Dmanissi man [fossils 1.85 million years old], and Australopithecus africanus [fossils 3.0 – 2.1 million years old = Biber cold interval, and Tegelen warm interval], soft-bodied both (D.5b:89).
- - - - - 9th primordial people : Marama **from Central America** (D.5b:47). - Negrito precursors on **Tristan da Cunha** (D.5b:47, 311).
- - - - - 10th primordial people : Precursors of Native Americans migrate to **Atlantis** (D.5b:48, 127).
- - - - - 11th primordial people : Bushman precursors split off on **Atlantis** soft-bodied Homo ergaster «working man» {with stone tools ?} [earliest fossils 1.9 – 1.4 million years old = Danube-Günz warm interval] (D.5b:88). - Khoi/San precursors migrate to **South America** → **Atlantis** ~ 3 million years ago (D.5b:195), meeting there with other negrids (D.5b:88).
- - - - - 12th primordial people : Aborigines precursors **from central Asia** (D.5b:48, 90), → **Atlantis** (D.5b:183), there splitting off soft-bodied Australopithecus anamnensis → **Africa** (D.5b:90).



Fig. I.6.6. “Gathered on Atlantis” in the late Miocene (D.5b:71).

- - - - - **Gathered on Atlantis** during the Lamech era / **Toltec epoch** (7 – 3 million years ago) (D.5b:7) :
- - - - - 4th primordial people : Papua precursors back there again (D.5b:46).
- - - - - 7th primordial people : Firbolg precursors (in the **south Atlantic**, too), mixing with Ainu precursors (D.5b:23), splitting off soft-bodied Homo sambungmacan (D.5b:33).
- - - - - 8th primordial people : Bantu precursors splitting off Dmanissi man [fossils 1.85 million years old], and Australopithecus africanus, soft-bodied both (D.5b:89).
- - - - - 9th primordial people : Negrito precursors (D.5b:46), not mixing with Ainu precursors (D.5b:19). Negrito precursors split off soft-bodied Homo heidelbergensis (D.5b:25).
- - - - - 11th primordial people : Khoi/San precursors, after having mixed with Ainu precursors, split off soft-bodied Homo erectus Steinheimer (D.5b:28).
- - - - - 12th primordial people : Ainu precursors mixing with Khoi/San precursors (D.5b:28). - Aborigines precursors split off soft-bodied Australopithecus Garhi (D.5b:35, 37).
- - **Pliocene** «more unusual» [5.333 – 2.588 million years ago] : **early Pliocene** : earliest high valleys [at great altitudes, little erosion] ; **late Pliocene** : earliest saw-cut valleys [V form : deep erosion and slope denudation in equilibrium] (D.6:155).
- - - - - **7th Atlantic epoch** = Noah era (~ 2,800 thousand years ago – 10,969 thousand years ago), maximum effect 990 thousand years ago. - Sunrise on the spring equinox (3/21) in Leo (D.6:209).
- - - - - **1st Atlantean Flood** (2,800 thousand years ago) (D.5a:171 f, 178).

I.6. Ages in Keywords



Fig. I.6.7. "Rats leaving the sinking Atlantis ship ?" (D.5b:39).

- **Quaternary** [2,588 thousand years ago up to our days] : The Earth becomes mineral = upmost layer of the Earth's interior pressing the deeper = earlier layers down (D.6:139).
- - **Ice age = Pleistocene «most new»** [2,588 – 11.7 thousand years ago] : saw-cut valleys = V-shaped valleys (D.5b:94).
- - - **Gelasium** [2,588 – 1,806 thousand years ago] :
- - - - **Primordial Turanians** (2,800 – 2,000 thousand years ago) = part 1 of the 7th Atlantic epoch (= **Noah era** (~ 2,800 thousand years ago – 10,969 thousand years ago)) :
- - - - - **Leaving Atlantis** during the Noah (1) era / **Primordial Turanian epoch** (D.5b:46 ff) :
- - - - - 2nd primordial people : Papuas from **South America** → **New Zealand plateau** → **southern Australia**.
- - - - - 3rd primordial people : Negritos → **Central America** → **Pacific** → **Papua** and **northern Australia**.
- Hun precursors in **South America** (D.5b:49).
- - - - - 4th primordial people : Khoi/San from **South America** → **New Zealand plateau** → **southern Australia**.
- - - - - 5th primordial people : Negroide from **South America** → **New Zealand plateau** → **southern Australia**.
- - - - - 6th primordial people : Indianer → **North America**.
- - - - - 7th primordial people : Firbolg → **Central America** → **Pacific** → **Papua** and **northern Australia**.
- - - - - 8th primordial people : Cro-Magnon precursors → **South America**, there splitting off the soft-bodied Neanderthals (D.5b:49).
- - - - - 12th primordial people : Aborigines precursors split off soft-bodied Australopithecus afarensis on **Atlantis** (D.5b:37).
- - - - - Pre-humans and early humans : Australopithecus Garhi and Australopithecus afarensis to **Tristan da Cunha** → **South Africa** → **East Africa** or to **Tristan da Cunha** → **South America** ? - Homo heidelbergensis, Homo sambungmacan [Java man, fossils 1,660 / 1,300 thousand years old], and Homo Steinheimer to **northern Africa** → **Europe**. - Dmanissi man stays on **Atlantis** (D.5b:89). - Homo antecessor stays in **Europe** (D.5b:90).
- - - - - **BIBER ice age {I}** [2,588 – 2,400 thousand years ago] / (D.5a:152, 171 f) 2,800 – 2,400 thousand years ago) :
- - - - - 2nd primordial people : Ainu precursors in **Europe** (D.5b:49, D.7:226).
- - - - - 3rd primordial people : Hun precursors in **South America** (D.5b:49, D.7:222).
- - - - - 4th primordial people : Papua precursors on **Atlantis** (D.5b:90 f).
- - - - - 5th primordial people : Marama precursors on **Atlantis** (D.5b:74, D.6:437).
- - - - - 6th primordial people : Firbolg precursors on **Atlantis** (D.5b:23, D.6:429), there splitting off soft-bodied Homo erectus Sambungmacan (D.5b:33).
- - - - - 7th primordial people : Cro-Magnon precursors migrate from **North America** → **South America**, there splitting off soft-bodied Neanderthals (D.5b:49 f).
- - - - - 8th primordial people : Bantu precursors on **Atlantis** (D.6:333).
- - - - - 9th primordial people : Negrito precursors on **Atlantis** (D.5b:311), there splitting off soft-bodied Homo heidelbergensis (D.5b:25).
- - - - - 10th primordial people : Huns in **South America** (D.5b:49).
- - - - - 11th primordial people : Khoi/San precursors on **Atlantis** (D.5b:195), there mixing during the 2nd half with Ainu precursors (D.5b:195), and splitting off soft-bodied Homo erectus Steinheimer (D.5b:28).
- - - - - 12th primordial people : Aborigines precursors on **Atlantis** (D.5b:183), there splitting off Australopithecus Garhi (D.5b:35) and Australopithecus afarensis («Lucy»), soft-bodied both (D.5b:37), and mix-

I. Graphs, Diagrams, Spreadsheets, Cues

ing there during the 2nd half with the other Negroid peoples (primordial peoples 4, 6, 8, 9, 11) and the Ainu precursors (2nd primordial people) (D.5b:183).

- - - - - Pre-humans and early humans : Australopithecus africanus in **Europe** (D.5b:89). - Dmanissi man on *Atlantis* still (D.5b:89). - Homo ergaster on *Atlantis* still (D.5b:88). - Homo antecessor stays in **Europe** (D.5b:90). - Homo rudolfensis stays in **Africa** (D.5b:91).
- - - - - Biber-Danube warm interval {2,400 – 2,000 thousand years ago}.
- - - - - 2nd *Atlantean* Flood (2,000 thousand years ago).
- - - - - **Primordial Semites** (2,000 – 475 thousand years ago) = part 2 of the 7th *Atlantic epoch* (= Noah era (~ 2,800 thousand years ago - 10,969 thousand years ago)) : “I” consciousness begins, before there was just a sense of self (D.6:467).
- - - - - Tiglien = Tegelen warm interval [2,000 – 1,600 thousand years ago] / (D.5a:172 : [2400 – 2000 thousand years ago]) :
- - - - - 2nd primordial people : Ainu precursors in **Europe** (D.5b:49 , D.7:226).
- - - - - 3rd primordial people : Negritos in **South America** (D.5b:19). - Hun precursors split off the soft-bodied Cushites in **South America**, the larger rest → **Central America** (D.5b:49 , D.7:222).
- - - - - 5th primordial people : Negroids (without Firbolg, Negritos) migrate from *Atlantis* → **Tristan da Cunha** (D.5b:18 f). - Marama precursors on *Atlantis* (D.6:437).
- - - - - 6th primordial people : Firbolg precursors in **Australia** (D.6:429) → parts migrating to **Indonesia** (D.5b:23).
- - - - - 7th primordial people : Cro-Magnon precursors and Neanderthalian precursors in **South America** together (D.5b:50).
- - - - - 8th primordial people : Bantu precursors on **Tristan da Cunha** (D.6:333).
- - - - - 9th primordial people : Negrito precursors in **Central America** (D.5b:311).
- - - - - 11th primordial people : Initially the Cushites stay in **South America** (D.5b:49). Khoi/San precursors on **Tristan da Cunha** (D.5b:195).
- - - - - 12th primordial people : Aborigines precursors on **Tristan da Cunha** (D.5b:183).
- - - - - Pre-humans and early humans : Australopithecus africanus migrate from **Europe** → **South Africa**, extinct there (D.5b:89). - Australopithecus afarensis partly stay on *Atlantis* (D.5b: 37). - Australopithecus Garhi migrate from *Atlantis* to **Tristan da Cunha** (D.5b:35). - Homo ergaster migrate to **Africa**, extinct there (D.5b:88). - Dmanissi man migrate from *Atlantis* → **Europe** (D.5b:89). - Homo antecessor stays in **Europe** (D.5b:90). - Homo rudolfensis extinct in **Africa** (D.5b:91). - All the 3 following Homines erecti in the **Sahara**, no mixing : Heidelbergensis (D.5b:25) , Steinheimer (D.5b:28), Sambungmacan [Java man] (D.5b:33 , 28).



Fig. I.6.8. Distribution of peoples during the Danube ice age (D.5a:281).

- - - **Calabrium** [1,806 – 781 thousand years ago] :
- - - - - **DANUBE ICE AGE** {I} (2,000 – 1,820 thousand years ago) (D.5a:152 , 171 f)
- - - - - 2nd primordial people : Ainu precursors in **Europe** (D.7:226).
- - - - - 3rd primordial people : Negritos in **South America** (D.5b:19). - Hun precursors migrate from **Central America** → **Asia** → **Kazakstan** (D.7:222).
- - - - - 5th primordial people : Negroids (without Firbolg, Negritos) on **Tristan da Cunha** (D.5b:19). - Marama precursors in **Europe** (D.6:437).
- - - - - 6th primordial people : Firbolg precursors in **Australia** (D.5b:23 , D.6:429). Some Firbolg precursors {still} migrate → **Indonesia** ; the bodies of their offspring are taken by Homo erectus' animal souls (D.6:429).
- - - - - 7th primordial people : Firbolg in **Australia**, part on *Atlantis* (D.5b:23), parts migrate from **Australia**

I.6. Ages in Keywords

- - - - - to **Indonesia** (*D.5b:23*). - Cro-Magnon precursors and Neanderthalian precursors together in **South America** (*D.5b:50*).
- - - - - 8th primordial people : Bantu precursors in **Australia** (*D.6:333*).
- - - - - 9th primordial people : Negrito precursors in **Central America** (*D.5b:311*).
- - - - - 11th primordial people : Khoi/San precursors on **Tristan da Cunha** (*D.5b:195*).
- - - - - 12th primordial people : Aborigines precursors on **Tristan da Cunha** (*D.5b:183*).
- - - - - Pre-humans and early humans : Australopithecus afarensis migrate from **Atlantis** → **Tristan da Cunha** (*D.5b:37*). - Australopithecus Garhi still on **Tristan da Cunha** (*D.5b:35*). - Homo erectus Steinheimer in **Europe** (*D.5b:28*). - Homo heidelbergensis in the **Sahara** (*D.5b:25*). - Homo erectus Sambungmacan migrate from the **Sahara** → **Arabia** (*D.5b:33*). - Homo ergaster in **Africa**, extinct (*D.5b:88*). - Dmanissi man in **Europe**, extinct (*D.5b:89*). - Homo antecessor stays in **Europe** (*D.5b:90*). - Homo rudolfensis stays in **Africa** (*D.5b:91*).
- - - - - **BIBER ICE AGE {II} (1,800 – 1,600 thousand years ago)** :
- - - - - Danube-Günz warm interval = Waal warm interval (1,820 – 1,600 thousand years ago) (*D.5a:152, 171 ff*) :
- - - - - 2nd primordial people : Ainu precursors as primordial Semites → **Atlantis** (*D.7:226*).
- - - - - 3rd primordial people : Negritos in **Australia** (*D.5b:19*). - Hun precursors in **Kazakstan** (*D.7:223*).
- - - - - 4th primordial people : Negroids : a small part of the Bushmans stays on **Tristan da Cunha**, the rest including the majority of Bushmans migrate to **South America**, not mixing with the Huns / Cushites there (*D.5b:19*).
- - - - - 5th primordial people : Marama precursors in **Europe** (*D.6:437*).
- - - - - 6th primordial people : Firbolg precursors in **Australia** (*D.5b:23, D.6:429*).
- - - - - 7th primordial people : Cro-Magnon precursors and Neanderthalian precursors migrate together to **Africa** (*D.5b:50*).
- - - - - 8th primordial people : Bantu precursors in **South America** (*D.6:333*).
- - - - - 9th primordial people : Negrito precursors in **Australia** (*D.5b:19, 311*).
- - - - - 11th primordial people : Khoi/San precursors in **South America** (*D.5b:195*).
- - - - - 12th primordial people : Aborigine precursors in **South America** (*D.5b:183*).
- - - - - Pre-humans and early humans : Cro-Magnon precursors and Neanderthalian precursors migrate together to **Africa** (*D.5b:50*). - Parts of Homo erectus heidelbergensis migrate from the **Sahara** → **Europe** (*D.5b:25 ff*). - Homo erectus Steinheimer in **Europe** (*D.5b:28*). - Large parts of Homo erectus Sambungmacan migrate from **Arabia** → **India** → **Indonesia** over the sea on Flying Shields (*D.5b:33*). - Australopithecus Garhi migrate from **Tristan da Cunha** → **South Africa** (*D.5b:35*). - Australopithecus afarensis migrate from **Tristan da Cunha** → **South Africa** → **Central Africa** → **East Africa**, extinct there (*D.5b:37*). - Homo rudolfensis extinct in **Africa** (*D.5b:91*).
- - - - - **GÜNZ ICE AGE (1,600 - 890 thousand years ago)** (*D.5a:152, 171 ff*) :
- - - - - All the 6 Negroid peoples (= primordial peoples 9, 8, 11, 4, 12, 6) migrate from **South America** → **Australia** and the **New Zealand plateau**, mixing there with the Firbolg precursors (*D.5b:19*).
- - - - - 2nd primordial people : Ainu precursors as primordial Semites on **Atlantis** (*D.7:226*).
- - - - - 3rd primordial people : Negritos in **Central America** (*D.5b:19*). - Hun precursors migrate from **Kazakstan** → **India** (*D.7:223*).
- - - - - 5th primordial people : Marama precursors in **Central Asia** (*D.6:437*).
- - - - - 6th primordial people : Firbolg in **Australia**, mixing there with the Khoi/San (*D.6:429*).
- - - - - 7th primordial people : Cro-Magnon precursors and Neanderthalian precursors together in **Africa** (*D.5b:50*).
- - - - - 8th primordial people : Bantu precursors in **Australia** and on the **New Zealand plateau** (*D.6:333*).
- - - - - 9th primordial people : Negrito precursors migrate from **Australia** → **Central America** (*D.5b:20, 311*).
- - - - - 11th primordial people : Khoi/San precursors in **Australia** and on the **New Zealand plateau**, mixing there with the Firbolg precursors (6th primordial people), resulting in the Bushmans / Hottentots in the strict sense (*D.5b:195*).
- - - - - 12th primordial people : Aborigines precursors in **Australia** and on the **New Zealand plateau** (*D.5b:183*).
- - - - - Pre-humans and early humans : Homo heidelbergensis (*D.5b:26*) and Homo erectus Steinheimer in **Europe** (*D.5b:28*). - Australopithecus Garhi in **South Africa** (*D.5b:35*).
- - - - - **Biber-Danube warm interval [1,400 – 1,100 thousand years ago]** :
- - - - - Pre-humans and early humans : Homo heidelbergensis (*D.5b:26*) and Homo erectus Steinheimer in **Europe** (*D.5b:28*). - Australopithecus Garhi in **South Africa** (*D.5b:35*).

I. Graphs, Diagrams, Spreadsheets, Cues

- - - - - **Waal-Warmzeit = Günz-Mindel warm interval [1,300 – 900 thousand years ago]**
- - - - - 3rd primordial people : Hun precursors in **Kazackstan** (D.7:222).
- - - - - 6th primordial people : Firbolg precursors in **Australia** (D.6:429).
- - - - - **DANUBE ICE AGE {II} [1,000 – 950 thousand years ago] :**
- - - - - Pre-humans and early humans : Homo heidelbergensis (D.5b:26) and Homo erectus Steinheimer in **Europe** (D.5b:28). - Australopithecus Garhi in **South Africa** (D.5b:35).
- - - - - 3rd **Atlantean Flood** (890 thousand years ago) (D.5a:171 f).
- - - - - **Cromer warm interval [800 – 490 thousand years ago] / (D.5a:172 : 890 – 475 thousand years ago) :** All the 6 Negroid peoples (= primordial peoples 9, 8, 11, 4, 12, 6) stay in **Australia** and on the **New Zealand plateau** (D.5b:19).
- - - - - 2nd primordial people : Ainu precursors as primordial Semites on **Atlantis** (D.7:226).
- - - - - 3rd primordial people : Negritos in **Central America** (D.5b:19). - Hun precursors in **Persia** (D.7:223).
- - - - - 4th primordial people : few Bushmans on **Tristan da Cunha**, extinct (D.5b:19).
- - - - - 5th primordial people : Marama precursors in **Central Asia** (D.6:437).
- - - - - 6th primordial people : Firbolg precursors migrate from **Australia** → partly iced **Antarctic** (D.5b:21 , D.6:429).
- - - - - 7th primordial people : Firbolg migrate from **Australia** → ice-free **Antarctic** (D.5b:20 f, 23). - Cro-Magnon precursors in **Africa** (D.5b:50).
- - - - - 8th primordial people : Bantu precursors in **Australia** and on the **New Zealand plateau** (D.6:333).
- - - - - 9th primordial people : Negrito precursors in **Central America** (D.5b:311).
- - - - - 11th primordial people : Khoi/San precursors in **Australia** and on the **New Zealand plateau** (D.5b:195).
- - - - - 12th primordial people : Aborigines precursors in **Australia** and on the **New Zealand plateau** (D.5b:183).
- - - - - Pre-humans and early humans : Homo erectus Steinheimer in **Europe** (D.5b:28). - Homo heidelbergensis in **Central Africa**, extinct (D.5b:26) [in **Europe** until 200 thousand years ago]. - Australopithecus Garhi in **South Africa** (D.5b:35). - Neanderthalian precursors → **Europe** → parts → **Atlantis** (D.5b:50). - Homo antecessor stays in **Europe** (D.5b:90).
- - - **Middle Pleistocene = Chibanian [= Ionium] [781 – 126 thousand years ago] :**
- - - - **CROMER COMPLEX = GÜNZ ICE AGE in the Alps [786 – 300 thousand years ago] :**
- - - - - 7th primordial people : Cromagnon precursors and Neanderthalian precursors together in **Africa** (D.5b:50).
- - - - - Pre-humans and early humans : Homo erectus Steinheimer in **Europe** (D.5b:28). - Australopithecus Garhi in **South Africa** (D.5b:35). - Homo antecessor extinct in **Europe** (D.5b:90).
- - - - - **Günz-Haslach warm interval [600 – 540 thousand years ago] :** Homo erectus Steinheimer in **Europe** (D.5b:28). - Australopithecus Garhi in **South Africa** (D.5b:35).
- - - - - **HASLACH-KALTZEIT [vor 550 – 500 thousand years ago] :** Homo erectus Steinheimer in **Europe** (D.5b:28). - Australopithecus Garhi in **South Africa** (D.5b:35).
- - - - - **Haslach-Mindel-Warmzeit [vor ~ 480 thousand years ago] :** Homo erectus Steinheimer in **Europe** (D.5b:28). - Australopithecus Garhi in **South Africa** (D.5b:35).
- - - - - **Acadians** (475 – 115 thousand years ago) = part 3 of the 7th **Atlantean epoch** (= Noah era (~ 2,800 – 10.969 thousand years ago)) :
- - - - - **MINDEL ICE AGE** (D.5a:152 , 172 : *joined to ELSTER ICE AGE*) (460 – 400 thousand years ago) : Homo erectus Steinheimer in **Europe** (D.5b:28). - Australopithecus Garhi in **South Africa** (D.5b:35).



I.6. Ages in Keywords

Fig. I.6.9. Distribution of peoples during the Elster ice age (D.5a:206).

- - - - - **ELSTER ICE AGE [400 – 320 thousand years ago] / (D.5a:152 , 171 j : 475 - 340 thousand years ago) :** On **Atlantis** : Cushites and Neanderthal relatives.
- - - - - 2nd primordial people : Ainu precursors as primordial Semites because of the Acadian Cushites migrate from **Atlantis** → **Central America**, expelled from there (D.7:226).
- - - - - 3rd primordial people : Hun precursors migrate from **Persia** → **Arabic peninsula**, mixing there with Native Americans (D.7:223).
- - - - - 4th primordial people : Papua precursors stay in **Australia** up to today, part of them → **New Guinea** (D.5b:21). - Khoi/San precursors from **Australia** → **South America** (D.5b:20).
- - - - - 5th primordial people : Marama precursors in **Central Asia** (D.6:437).
- - - - - 6th primordial people : Firbolg precursors in **India**, mixing with Native Americans → Firbolg in the strict sense (D.6:429).
- - - - - 7th primordial people : Cro-Magnon precursors in **Europe** (D.5b:50 , D.6:339).
- - - - - 8th primordial people : Bantu precursors from **Australia** → **Africa** (D.5b:20).
- - - - - 9th primordial people : Negrito precursors in **Central America** (D.5b:311).
- - - - - 11th primordial people : Cushites on **Atlantis**, too (D.5b:50). - Khoi/San precursors migrate from **Australia** → **South America** (D.5b:20 f, 195).
- - - - - 12th primordial people : Aborigines precursors stay in **Australia** (D.5b:21 , 183).
- - - - - Pre-humans and early humans : Homo erectus Steinheimer in **Europe** (D.5b:28). - Australopithecus Garhi migrate from **South Africa** → **Central and East Africa**, extinct there (D.5b:35). - Neanderthal precursors in **Europe** and **Atlantis** (D.5b:50).
- - - - - 4th Atlantean Flood [> 340 thousand years ago] (D.5a:171 f).
- - - - - **Holstein-/ Saale warm interval = Mündel-Riss warm interval in the Alps [340 – 325 thousand years ago] / (D.5a:152 , 171 j : 340 - 300 thousand years ago) :**
- - - - - 2nd primordial people : Ainu precursors as primordial Semites → **Hawaii area** (D.7:226).
- - - - - 3rd primordial people : Negritos in **Central America** (D.5b:19). - Hun precursors on the **Arabian peninsula**, mixing there with Native Americans (D.7:223).
- - - - - 5th primordial people : Marama precursors in **southern Africa** (D.6:437).
- - - - - 6th primordial people : Firbolg precursors in **Persia** (D.6:429).
- - - - - 7th primordial people : Firbolg in **Persia** (D.5b:20). - Cro-Magnon precursors in **Europe** (D.5b:50), mixing there with the Huns (D.6:339).
- - - - - 8th primordial people : Bantu precursors in **Africa** (D.6:333).
- - - - - 9th primordial people : Negrito precursors in **Central America** (D.5b:311).
- - - - - 11th primordial people : Khoi/San precursors in **South America** (D.5b:196).
- - - - - 12th primordial people : Aborigines precursors in **Australia** (D.5b:183).
- - - - - Pre-humans and early humans : Homo erectus Steinheimer extinct in **Europe** (D.5b:28).
- - - - - 5th Atlantean Flood (300 thousand years ago).
- - - - - **SAALE-KOMPLEX = RISS-KALTZEIT in den Alpen [vor 300 – 126 thousand years ago] :**
- - - - - 2nd primordial people : Ainu precursors as primordial Semites in the **Hawaii area** (D.7:226).
- - - - - 3rd primordial people : Negritos in **North America** (D.5b:19). - Hun precursors migrate from **Arabia** → **Africa** → **Mozambique** (D.7:223).
- - - - - 4th primordial people : Papua precursors : a small part migrate to **Africa**, becoming Pygmies (D.5b:21).
- - - - - 5th primordial people : Marama precursors in **southern Africa** (D.6:437).
- - - - - 7th primordial people : Firbolg in **North Africa** (D.5b:20). - Cro-Magnon precursors in **Europe** (D.5b:50 , D.6:339).
- - - - - 8th primordial people : Bantu precursors in **Africa** (D.6:333).
- - - - - 9th primordial people : Negrito precursors in the **USA** (D.5b:311).
- - - - - 11th primordial people : Khoi/San precursors in **South America** , parts of them → **Antarctic** (D.5b:196).
- - - - - 12th primordial people : Aborigines precursors in **Australia** (D.5b:183), a small part migrate together with the Papua precursors to **Africa** → **Atlantis** → **China** → back to **Africa** (D.5b:21 , 183).
- - - - - Pre-humans and early humans : Neanderthal precursors in **Europe** 200 – 40 thousand years ago and on **Atlantis** (D.5b:50).
- - - - - **Late Pleistocene [Tarantium] [126 – 11.7 thousand years ago] :**

I. Graphs, Diagrams, Spreadsheets, Cues

- - - - Eem-/ Riss-Würm warm interval [128 – 115 thousand years ago] : Homo neanderthalensis in **Europe** [200 – 40 thousand years ago] (*D.5b:50*) ; parts of Papua precursors and parts of Aborigines precursors migrate from **Atlantis** → **China** → **Africa** (*D.5b:21*).
- - - - - 2nd primordial people : parts of Papua precursors migrate from **Africa** → **Atlantis** (*D.5b:21*). - Ainu precursors as primordial Semites → **India** (*D.7:226*).
- - - - - 3rd primordial people : Hun precursors migrate from **Mozambique** → **Europe**, mixing there with Ainu and Cro-Magnons ; Huns staying on **Mozambique** mix with Negroids to Maasai precursors (*D.7:223*).
- - - - - 5th primordial people : Marama precursors in **southern Africa** (*D.6:437*).
- - - - - 7th primordial people : Cro-Magnon precursors in **Europe** (*D.6:339*).
- - - - - 8th primordial people : Bantu precursors on **Atlantis** , mixing there with the Ainu (*D.6:333*).
- - - - - 9th primordial people : Negrito precursors migrate from **Central America** → **South America** (*D.5b:311*).
- - - - - 11th primordial people : Khoi/San precursors in **South America** , those in the **Antarcti** go extinct (*D.5b:196*).
- - - - - 12th primordial people : Aborigines precursors in **Australia** (*D.5b:183*) , parts migrate from **Africa** → **Atlantis** (*D.5b:21*).
- - - - 6th **Atlantean Flood** (115 thousand years ago).
- - - - **Mongols** (115 – 10.969 thousand years ago) = part 4 of the 7th **Atlantean epoch** (= Noah era (~ 2,800 – 10.969 thousand years ago)) :
- - - - **VISTULA ICE AGE = WÜRM ICE AGE** in the Alps [115 - 10.969 thousand years ago] : Huns, Ainu, Marama, Cushites, Zappas : all of them to **North Atlantis / Thule / Hyperborean area** (*D.5b:79*) :
- - - - **VISTULA -I- ICE AGE** (115 – 49 thousand years ago) (*D.5a:152 , 171 f*) : Homo neanderthalensis in **Europe** 200 – 40 thousand years ago :
- - - - - 2nd primordial people : Papua precursors : parts migrate from **Africa** back to **Australia** (*D.5b:21*). - Ainu precursors as primordial Semites → **Europe** (*D.7:226*).
- - - - - 3rd primordial people : Hun precursors in **Europa**, parts → **Porcupine** (offshore from western Ireland) (*D.7:223*).
- - - - - 5th primordial people : Marama precursors in **southern Africa** [111.8 thousand years ago] → **Tristan da Cunha** [109 thousand years ago] → as Mongols to **Atlantis** [67 thousand years ago] → **North America** [48 thousand years ago] → **Iceland** [16 thousand years ago] → **Anatolia** → **China** → **New Zealand plateau** → **Peru** → **Bahama-Atlantis** → **Cape Verde** → **India** [10.2 thousand years ago] (*D.6:437*).
- - - - - 7th primordial people : Cro-Magnon precursors in **Europe** (*D.6:339*).
- - - - - 8th primordial people : Negroids → **Europe** [105 thousand years ago] → **Israel** [98 thousand years ago] → **Egypt** [89 thousand years ago] → **Ethiopia** [84 thousand years ago] → **West-Africa** [12.7 thousand years ago] (*D.6:333*).
- - - - - 9th primordial people : Negrito precursors migrate from **South America** → **Africa** → **Asia / South America** (*D.5b:311*).
- - - - - 11th primordial people : Khoi/San precursors migrate from **South America** → **Africa**, mixing with Firbolg precursors in the **Sahara** (*D.5b:196*). A small part however stays in **South America** , mixing with Negritos there (*D.5b:196*). Bushman precursors mix with “Marama II” in **South Africa** (*D.5b:196*).
- - - - - 12th primordial people : Aborigines precursors in **Australia** (*D.5b:183*), partly together with Papua precursors, migrate from **Africa** → back to **Australia** (*D.5b:21 , 183*).
- - - - - (*D.5a:152 , 171 f* : **Vistula / Würm rest** (49 – 23 thousand years ago)) :
- - - - - 6th primordial people : parts of southern European Firbolg precursors → **North Africa** (*D.6:429*).
- - - - **VISTULA -II- ICE AGE** (23 – 10.969 thousand years ago) (*D.5a:172*).
- - - - 7th **Atlantean Flood** (43 thousand years ago).
- - - - 8th **Atlantean Flood** (10,969 thousand years ago).
- - **Post ice age = Holocene** «completely new» [11.7 thousand years ago up to today] : End of the ice ages [11.2 thousand years ago], warm interval since then (*D.5a:152*).
- - - - - 8th primordial people : Negroids migrate from **Ethiopia** → **West-Africa** 10.7 thousand years ago (*D.6:333*).

The *Post-Atlantic age so far*'

Waking day consciousness as well as the individual "I" are to unfold gradually.

The 5 out of 7 Post-Atlantic cultural periods so far (*D 6:209*) :

The 1st = the primordial Indian cultural period : Sun at spring equinox (3/21) in Cancer.

The 2nd = the primordial Persian cultural period : Sun at spring equinox (3/21) in Gemini.

The 3rd = the Assyrian-Babylonian-Chaldean-Egyptian-Hebrew/Jewish cultural period : Sun at spring equinox (3/21) in Taurus.

The 4th = the Griego-Roman cultural period : Sun at spring equinox (3/21) in Capricorn.

The 5th = the Anglo-Saxon-Germanic cultural period : Sun at spring equinox (3/21) in Pisces.